

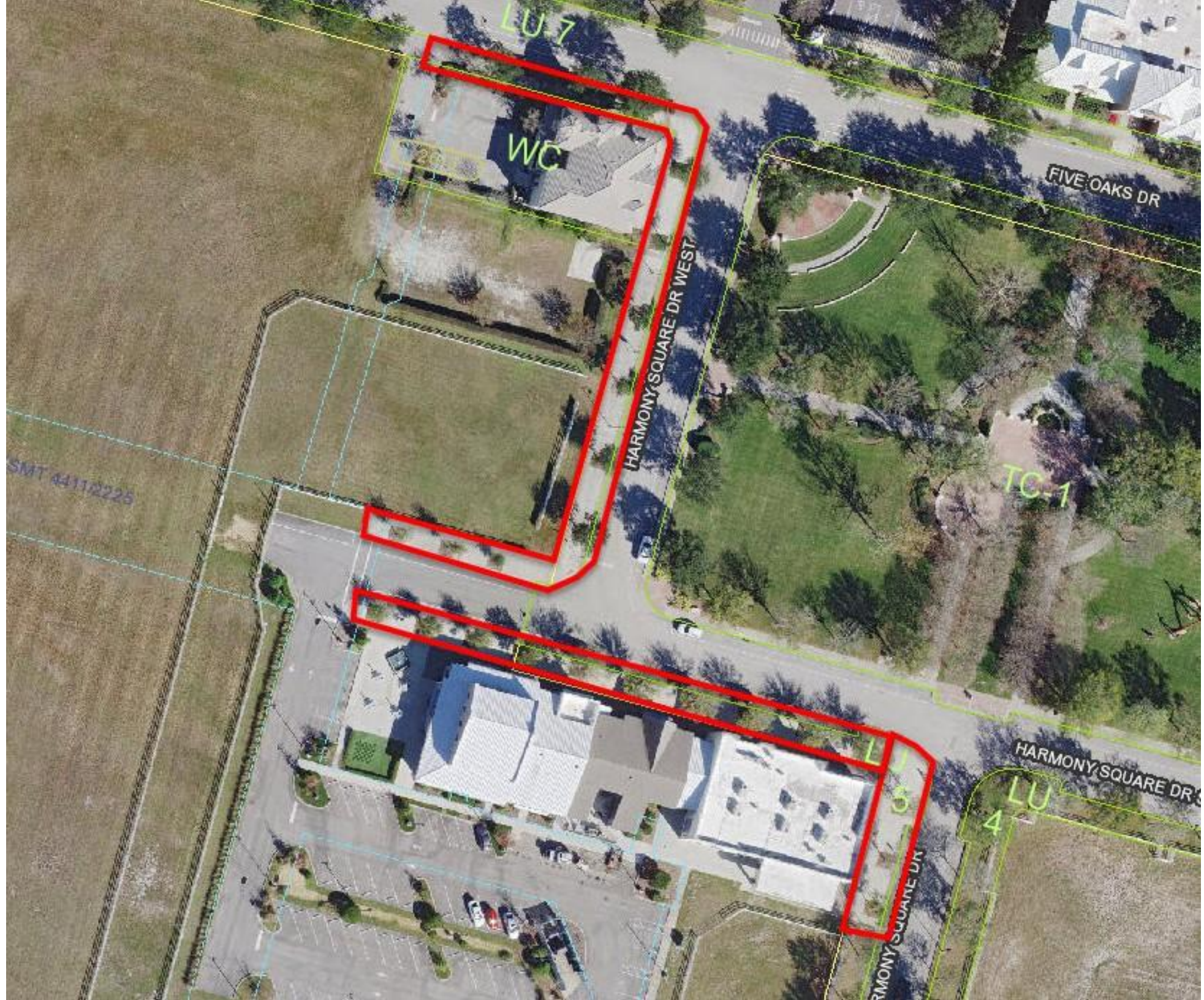
Fusilier Maintenance Request

Maintenance of Curb-Appeal Area in Town Center

Harmony CDD Board Members:

Attached is an aerial map of the reference property. I am requesting once again that the CDD maintain this area. I have made this request for a year & a half in private meetings with Steve Berube and at multiple CDD meetings. While the subject gets talked about, Chairman Steve Berube always manages to table it for unspecified reasons. I formally seek resolution of the issue at the 31 October 2019 meeting, with specification as to area maintenance. Note that the area in question needs plant life renewal and on-going active irrigation, tree trimming, & fertilization. I thank you for your attention and consideration.

Steve Fusilier



LU 7

WC

HARMONY SQUARE DR WEST

FIVE OAKS DR

TC-1

SMT 44112225

LU 5

HARMONY SQUARE DR

LU 4

Current Maintenance Areas

Privately-Owned Parcels Under Public Maintenance

32-26-32-0000-0012-0000 Compass Trading This is the easternmost parcel along 192 and includes part of a pond. 7.68 acres.

31-26-32-0000-0013-0000 Compass Trading This is slightly west of the above and is similarly situated. 8.27 acres.

30-26-32-2612-0000-0010 Harmony Retail This is a strip along 192 further west of the above and encompasses 0.694 acres.

31-26-32-0000-0012-0000 Harmony Retail This is north (inland) of the above, includes part of a pond and a strip along the East entrance road's east side. 4.74 acres.

30-26-32-2612-000U-0020 Harmony Retail This is west of the above, west of the east entrance and includes a strip along 192 as well as an inland (north) strip between fields. 2.818 acres with approx. 1 acre being maintained.

30-26-32-2612-TRAC-00XO Harmony Retail This is inland (north) of the above and includes the retail center and a pond. 14.925 acres with approx. 4 acres being maintained.

30-26-32-2642-00GC-0030 Harmony Golf This is a strip along 192 west of Ashley as well as a large area including ponds and golf. 39.139 acres with approx 2 acres being maintained.

29-26-32-0000-0012-0000 Central Bark is part of a larger parcel though separate; the parcel total is 5.46 acres; Central Bark estimated at 0.5 acre.

Meeting Video Recordings

Local Government Streaming Camera Use

Harmony CDD

Osceola County Board of County Commissioners

Public Information Office: 407-742-2000 (Mark Pino)

BCC: Meeting

[Click here to watch the video in full screen.](#)



Documents

Click on one of the documents below to view.

- [Online Agenda](#)
- [ADA Accessible Agenda Outline](#)
- [Action Minutes \(Formerly referred to as Meeting Actions\)](#)

Osceola County Board of County Commissioners

Public Information Office: 407-742-2000 (Mark Pino)

- ▶ Main meetings utilize expensive equipment in a control room to mix board member microphones, lectern, video sources, etc. for boardroom speakers as well as recording and streaming use
 - ▶ TriCaster video production equipment, cameras, microphones, etc. total many tens of thousands of dollars
- ▶ County uses a Mevo Plus with Boost module to record smaller events, such as the State of the County speech
- ▶ Mevo Plus with Boost module was chosen for longer battery life and the ability to use an external microphone
- ▶ County PIO is happy with and recommends Mevo Plus
 - ▶ Recommended to use in a bright room for best results

Osceola County Board of County Commissioners

Public Information Office: 407-742-2000 (Mark Pino)

- ▶ Vimeo Premium service used for live streaming and archival
- ▶ Rev captioning service is used for meeting transcription
 - ▶ \$1 per minute, 24 hour turn time
 - ▶ Video is linked directly from YouTube, Vimeo, etc. for captioning

Celebration CDD

admin@celebrationcdd.org (c/o Kristen Suit)



September 18, 2019

BOARD MEETING RECORDINGS

Every regular Board meeting is recorded and presented here exactly as it occurred with no editing. Occasionally, there may be more than one part to a meeting if it runs long.

Our apologies the August 21, 2018, meeting was not videotaped, and the April 16, 2019, meeting is only partially videotaped (the first 25 minutes).

Celebration CDD

admin@celebrationcdd.org (c/o Kristen Suit)

- ▶ Live Streaming not used
- ▶ No ADA requests so far, but transcription will be required for videos to remain on website
- ▶ Video is recorded to SD card, then transferred to an iPad, then edited and uploaded
 - ▶ Editing includes adding a title and trimming beginning & end of video
 - ▶ Vimeo account limits upload to about 2 hours of video per week, longer meetings must be uploaded in parts

Mevo Plus



- ▶ Streams directly to Facebook, YouTube, etc. without a PC
- ▶ Streams 1080p HD, records 4K to SD card at the same time
- ▶ Control via iPhone or Android app
- ▶ Built-in Wi-Fi, or can use LTE via phone's hotspot
- ▶ 150° field of view captures entire meeting
- ▶ “Auto pilot” mode can automatically zoom in/out

Boost Module



- ▶ Extends battery life from 1 hour to 10 hours
- ▶ Adds wired Ethernet port
- ▶ Adds external audio input via USB adapter

Mevo Plus

(Prices updated October 2019)



- ▶ \$349 - Mevo Plus live event camera
- ▶ \$499 - Mevo Plus + Boost Module
- ▶ \$539 - Mevo Plus + Boost + Case
- ▶ \$619 - Mevo Plus + Boost + Case + Tripod
- ▶ Includes 16GB microSD card, which holds 100 minutes of HD or 50 minutes of 4K
 - ▶ \$44 - 64GB microSD
 - ▶ \$58 - 128GB microSD
- ▶ Audio connector options:
 - ▶ \$9 - USB microphone adapter
 - ▶ \$139 - USB audio mixer

Vimeo Hosting Plans

The Vimeo logo is displayed in a dark blue, lowercase, sans-serif font. The letters are bold and have a slightly rounded, friendly appearance. The 'i' has a distinct dot, and the 'o' is a simple circle. The overall style is clean and modern.

- ▶ Annual Subscriptions range from \$84 (Plus) to \$900 (Premium w/ streaming)
- ▶ Weekly upload limits apply to Plus and Pro plans
 - ▶ 5 GB / week for Plus
 - ▶ 20 GB / week for Pro
- ▶ Unlimited viewer bandwidth
- ▶ Video overlay support

Harmony CDD Recommendation

- ▶ Purchase Mevo Plus with Boost module
 - ▶ \$700 one-time including case, tripod, memory card, microphone adapter
- ▶ Purchase Vimeo Pro subscription
 - ▶ \$240 per year
 - ▶ 20 GB weekly upload limit should be enough for all meetings
- ▶ Budget for Rev video captioning service
 - ▶ \$90 - \$180 per month, \$1080 - \$2160 per year depending on meeting length
- ▶ Stream meetings to Facebook or YouTube (free), upload meeting videos to Vimeo for archival use and ADA compliance
 - ▶ Vimeo-hosted live streaming costs \$900 per year

The background features abstract, overlapping geometric shapes in various shades of green, ranging from light lime to dark forest green. These shapes are primarily located on the left and right sides of the frame, leaving a large white central area. The shapes are composed of triangles and polygons, some with thin white outlines.

Thank you!