

SDP21-0087 / PD19-00035

CONSTRUCTION PLANS FOR THE GARDEN ROAD IMPROVEMENTS

HARMONY PHASE 3 - PARK TRACT "E" AND TRACT "GM"

HARMONY (ST. CLOUD), FLORIDA

HARMONY FLORIDA Community Development District

CDD BOARD OF SUPERVISORS

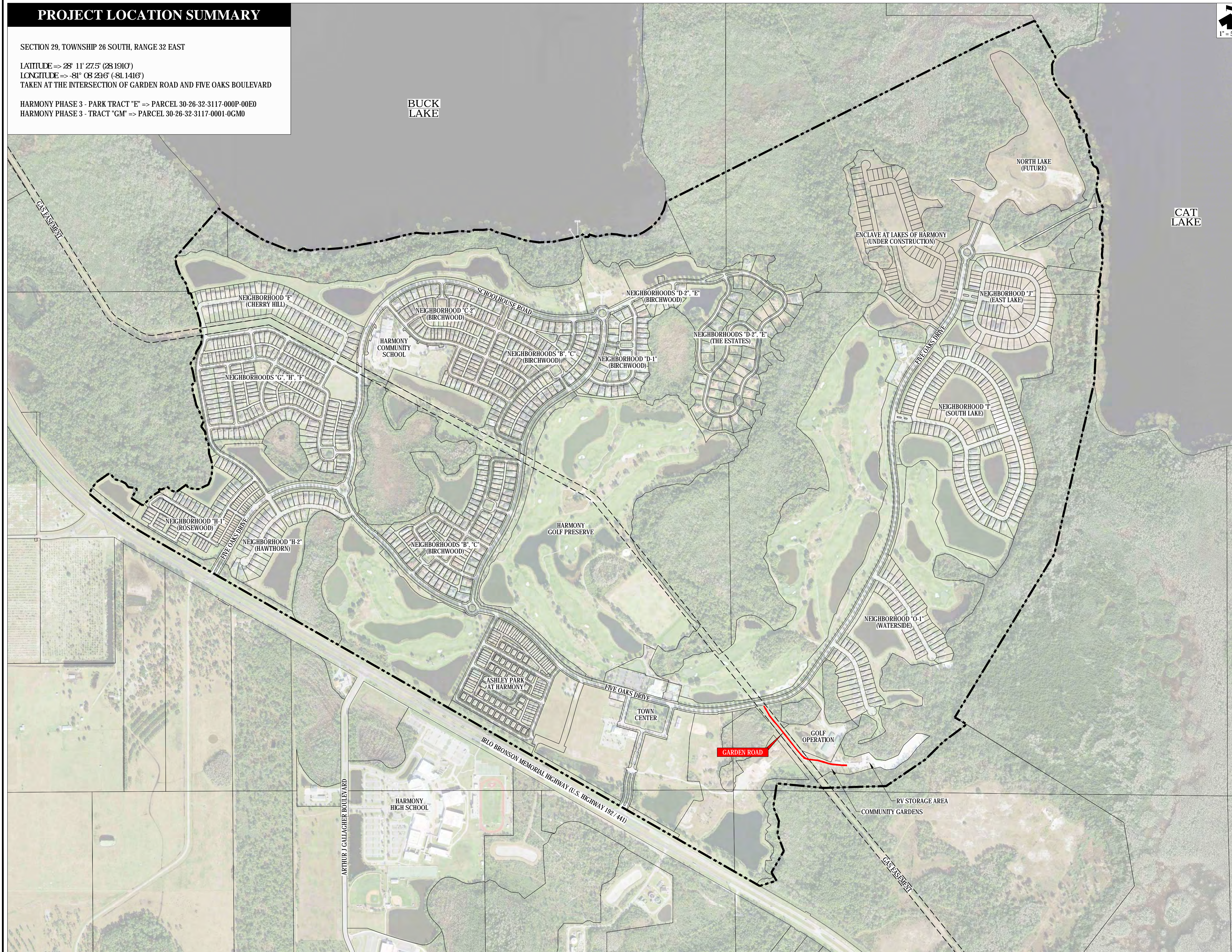
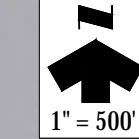
Teresa Kramer Chairman, Seat 5
 Daniel Leet Vice Chairman, Seat 1
 Kenil Kassel Assistant Secretary, Seat 3
 Steven Benbe Assistant Secretary, Seat 4
 Michael Scarborough Assistant Secretary, Seat 2

CDD REPRESENTATIVES

Angel Montagna (InfraMark) District Manager
 David Hamstra (Pegasus Engineering) District Engineer
 Timothy Qualls (Young Qualls, P.A.) District Legal Counsel
 Gerhard van der Snel Field Operations Manager

PROJECT LOCATION SUMMARY

SECTION 29, TOWNSHIP 26 SOUTH, RANGE 32 EAST
 LATITUDE => 28° 11' 27.5" (28.1910°)
 LONGITUDE => -81° 08' 29.6" (-81.1416°)
 TAKEN AT THE INTERSECTION OF GARDEN ROAD AND FIVE OAKS BOULEVARD
 HARMONY PHASE 3 - PARK TRACT "E" => PARCEL 30-26-32-3117-000P-00E0
 HARMONY PHASE 3 - TRACT "GM" => PARCEL 30-26-32-3117-0001-0GM0



DRAWING INDEX

SHEET	DRAWING TITLE
C01	COVER SHEET
C02	GENERAL NOTES
C03 - C05	BOUNDARY AND TOPOGRAPHIC SURVEY
C06	OVERALL SITE PLAN
C07	GEOMETRY PLAN
C08	GRADING PLAN
C09	CROSS SECTIONS
C10 - C11	TEMPORARY EROSION CONTROL PLAN AND DETAILS
C12	MISCELLANEOUS DETAILS

PLANS SUBMITTAL AND REVISION SUMMARY

NO.	DATE	DESCRIPTION

NOTES

- GOVERNING SPECIFICATIONS: STATE OF FLORIDA, DEPARTMENT OF TRANSPORTATION, STANDARD SPECIFICATIONS (LATEST EDITION) AND SUPPLEMENTS THERETO IF NOTED IN THE BID DOCUMENTS FOR THIS PROJECT.
- ATTENTION IS DIRECTED TO THE FACT THAT THESE PLANS MAY HAVE BEEN CHANGED IN SIZE BY REPRODUCTION. THIS MUST BE CONSIDERED WHEN OBTAINING SCALED DATA.
 - 11" x 17" DRAWINGS ~ NOT TO SCALE
 - 12" x 18" DRAWINGS ~ HALF SIZE
 - 24" x 36" DRAWINGS ~ TO SCALE
- ELEVATION INFORMATION SHOWN WITHIN THESE PLANS IS REFERENCED TO THE NAVD88 VERTICAL DATUM.
- DATUM SHIFT FOR THIS PROJECT (SEE PROJECT LOCATION SUMMARY THIS SHEET) WILL BE APPLIED AS A CONSTANT VALUE FOR CONVERTING ELEVATIONS BETWEEN THE NORTH AMERICAN VERTICAL DATUM OF 1988 (NAVD88) AND THE NATIONAL GEODETIC VERTICAL DATUM OF 1929 (NGVD29).

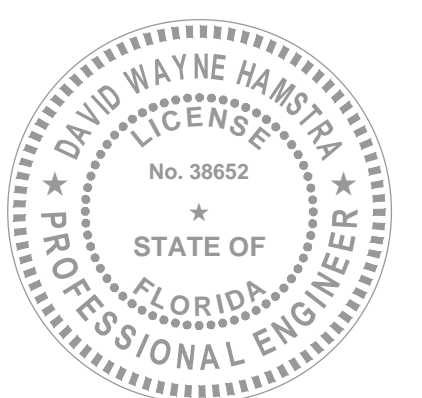
COMPUTED DATUM SHIFTS

- NAVD88 + 1.096' = NGVD29
- NGVD29 - 1.096' = NAVD88

CERTIFICATION BY THE ENGINEER OF RECORD

State of Florida Board of Professional Engineers
 Certificate of Authorization No. 27770

Pegasus ENGINEERING
 PEGASUS ENGINEERING, LLC
 310 WEST STATE ROAD 434, SUITE 309
 WINTER SPRINGS, FLORIDA 32708
 PHONE: 407-992-9160
 FAX: 407-358-5155



PRELIMINARY

DAVID W. HAMSTRA
 FLORIDA P.E. NUMBER 38652

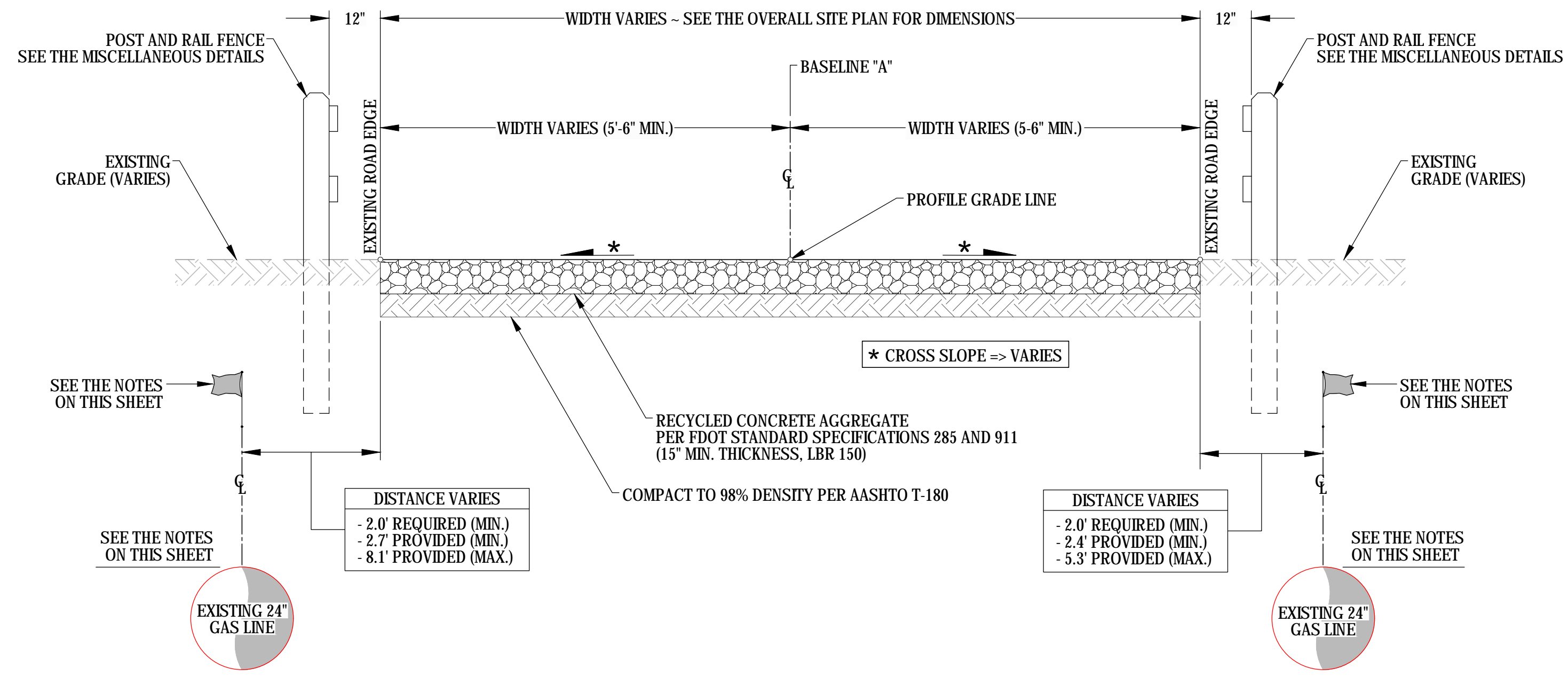
THIS ITEM HAS BEEN ELECTRONICALLY SIGNED AND SEALED BY DAVID W. HAMSTRA, P.E. ON OCTOBER 2, 2021 USING A DIGITAL SIGNATURE. PRINTED COPIES OF THIS DOCUMENT ARE NOT CONSIDERED SIGNED AND SEALED AND THE SIGNATURE MUST BE VERIFIED ON ANY ELECTRONIC COPIES.

THIS CERTIFICATION EXCLUDES CERTAIN INFORMATION THAT WAS PREPARED "BY OTHERS" AND MAY BE INCLUDED IN THE PLANS FOR THE CONTRACTOR'S CONVENIENCE, INCLUDING BUT NOT LIMITED TO THE TOPOGRAPHIC SURVEYS, MANUFACTURER DETAILS, FDOT DETAILS OBTAINED FROM THE DESIGN STANDARDS, AND STANDARD DETAILS PROVIDED BY THE CITY OF ST. CLOUD OR OSCEOLA COUNTY.

COPY

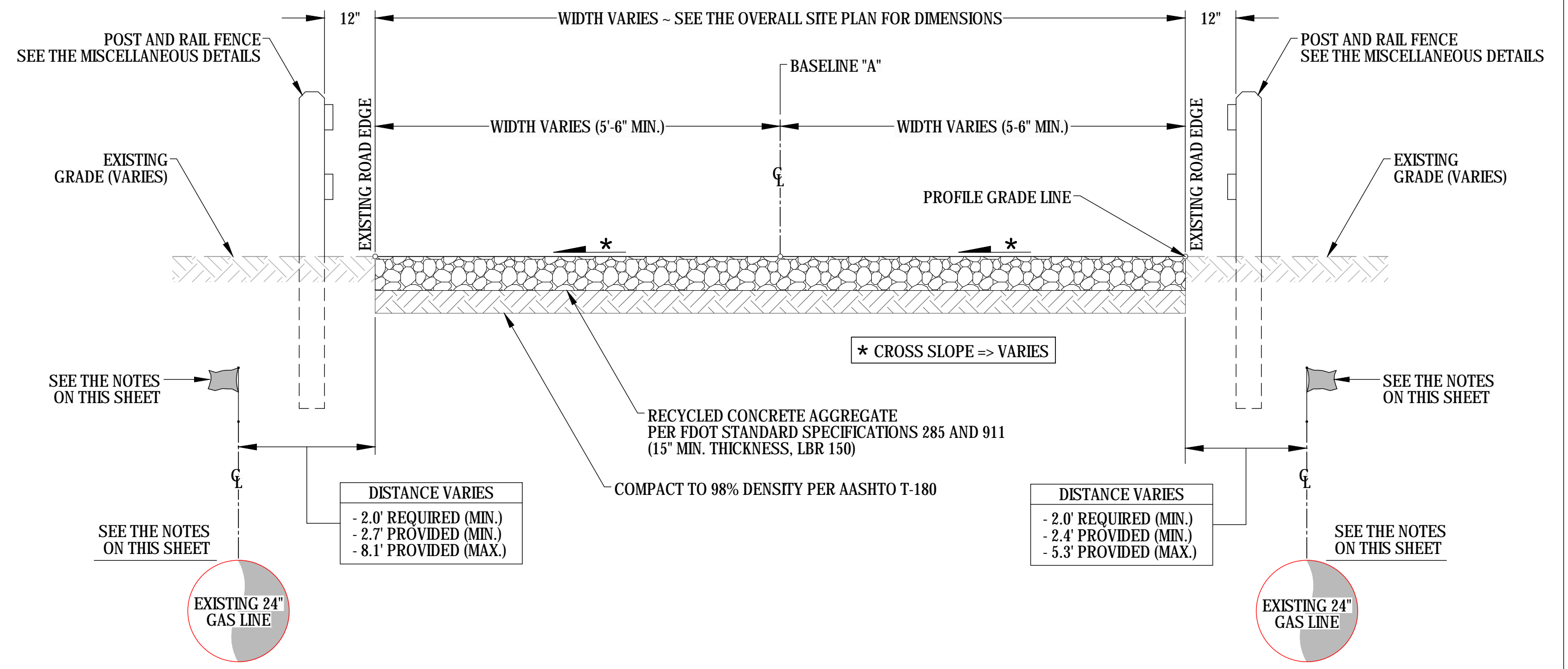
GARDEN ROAD IMPROVEMENTS

COPY



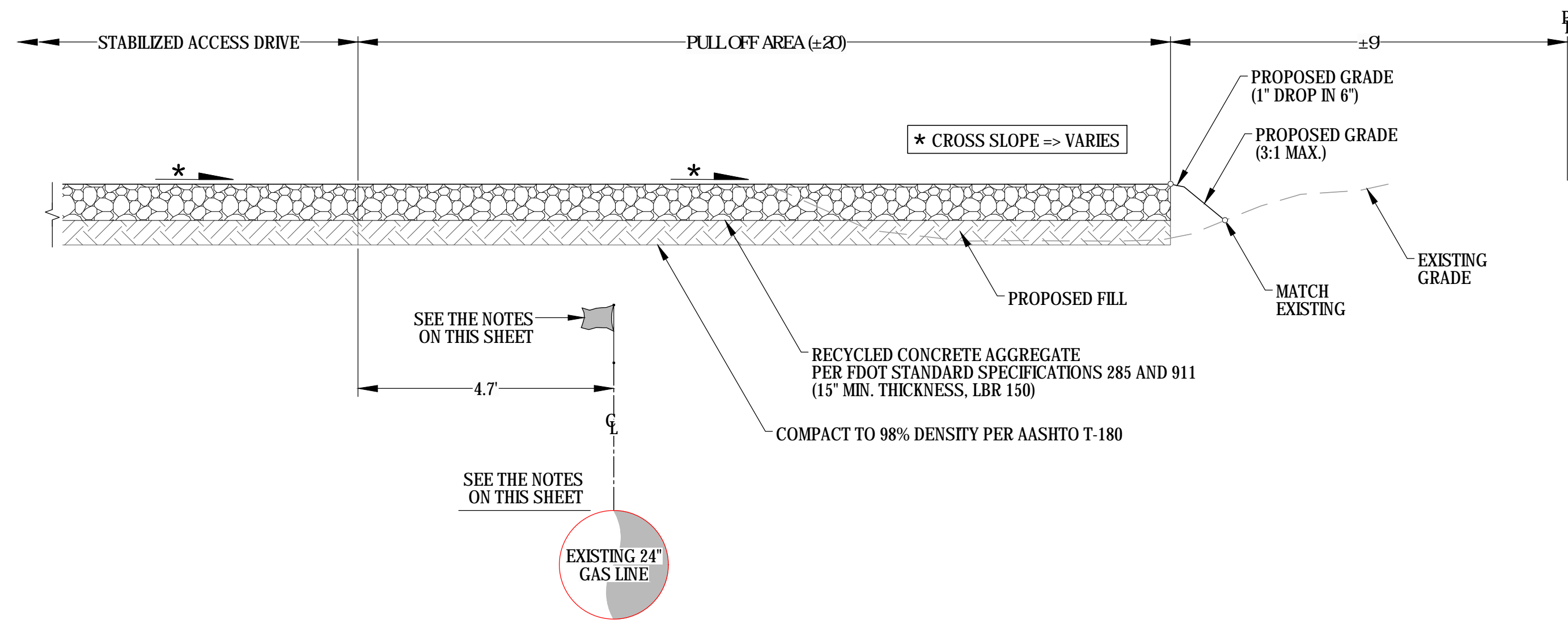
STABILIZED ACCESS DRIVE - NORMAL CROWN TYPICAL SECTION

NOT TO SCALE



STABILIZED ACCESS DRIVE - TILTED CROWN TYPICAL SECTION

NOT TO SCALE



PULL OFF AREA #2 - TYPICAL SECTION

NOT TO SCALE

1. CONSTRUCTION ACTIVITIES WITHIN THE EXISTING GAS EASEMENT MUST COMPLY WITH AN "EASEMENT COOPERATION AGREEMENT" JOINTLY EXECUTED BY FLORIDA GAS TRANSMISSION, LLC AND THE HARMONY COMMUNITY DEVELOPMENT DISTRICT.
2. FLAGS SHOWING THE HORIZONTAL LOCATION OF THE EXISTING GAS LINES WERE PLACED IN THE FIELD BY REPRESENTATIVES OF FLORIDA GAS TRANSMISSION COMPANY (FGT).
3. THE HORIZONTAL POSITION AND TOP ELEVATION OF THE EXISTING GAS LINES WAS OBTAINED BY JOHNSTON'S SURVEYING.

SUMMARY OF EXISTING GAS LINE ELEVATIONS				
STATION	LOCATION	GROUND EL.	GAS LINE TOP EL.	COVER (FEET)
1 + 65	WEST	75.3	69.0	6.3
1 + 65	EAST	75.3	69.6	5.7
3 + 15	WEST	75.3	68.5	6.8
3 + 15	EAST	76.0	69.6	6.4

NOTES - GAS LINES AND PIPELINE EASEMENT

REV.	DATE	DESCRIPTION



GARDEN ROAD IMPROVEMENTS
HARMONY PHASE 3 - PARK TRACT "E" AND TRACT "GM"

CROSS SECTIONS

Pegasus ENGINEERING
Pegasus Engineering, LLC
301 West SR 434, Suite 309
Winter Springs, Florida 32708
Office 407-992-9160
Fax 407-358-5155

State of Florida Board of Professional Engineers
Certificate of Authorization No. 27770

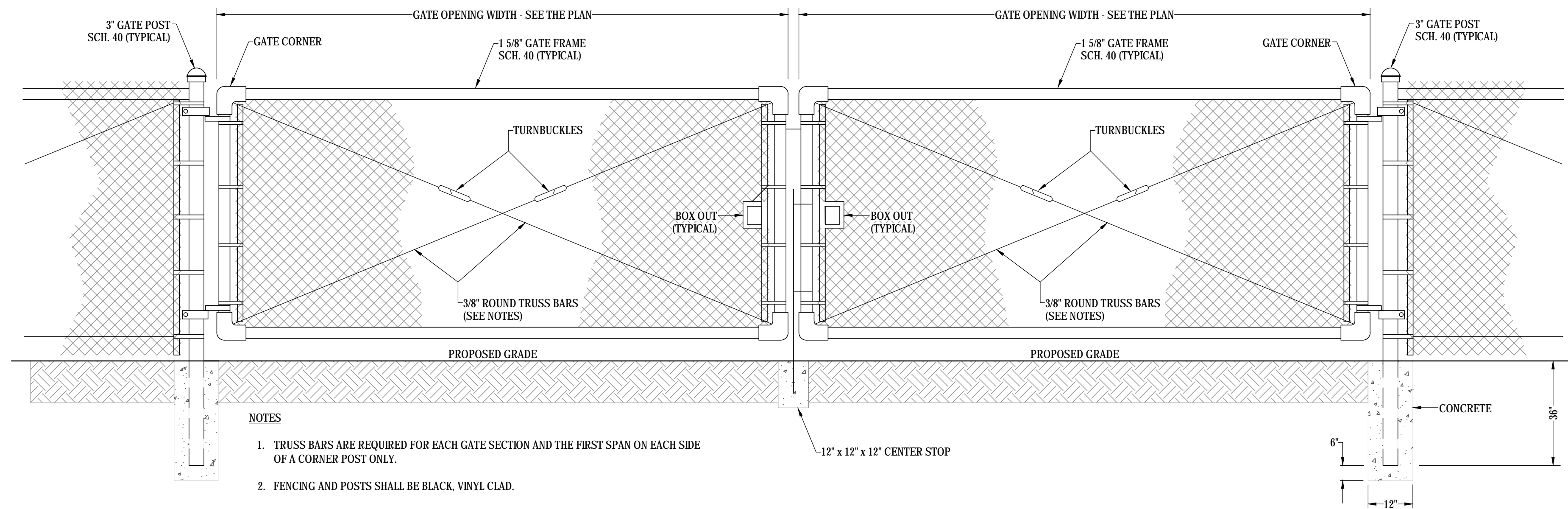
JOB No.:	MSC-22055
DESIGNED BY:	GAT
DRAWN BY:	CAD
APPROVED BY:	DWH
DATE:	OCTOBER 2021

SHEET C09 OF C12

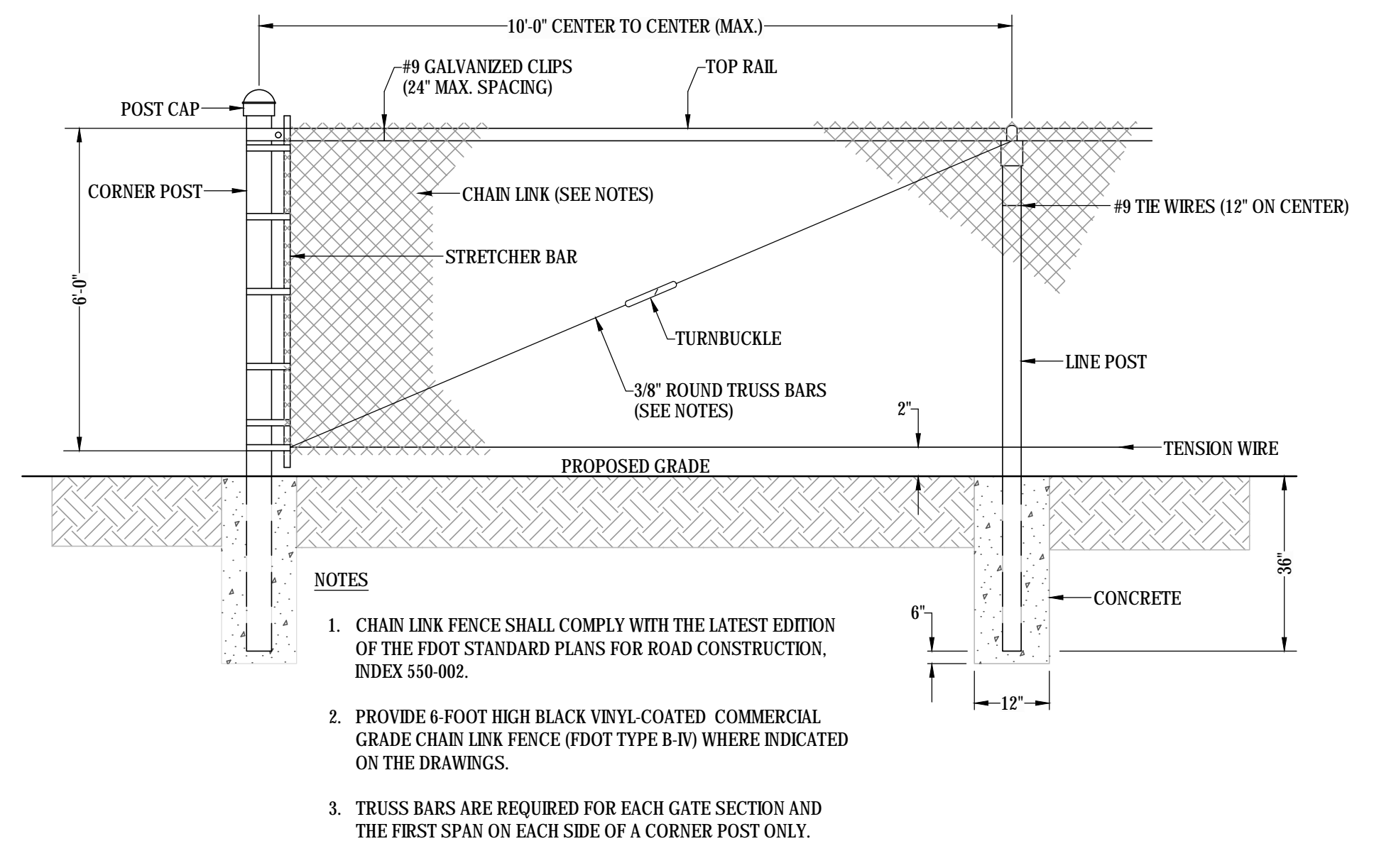
NOT A FINAL PLAN UNLESS SIGNED AND SEALED

PRELIMINARY
DAVID W. HAMSTRA, P.E.
REGISTRATION No. 38652
DATE: October 14, 2021

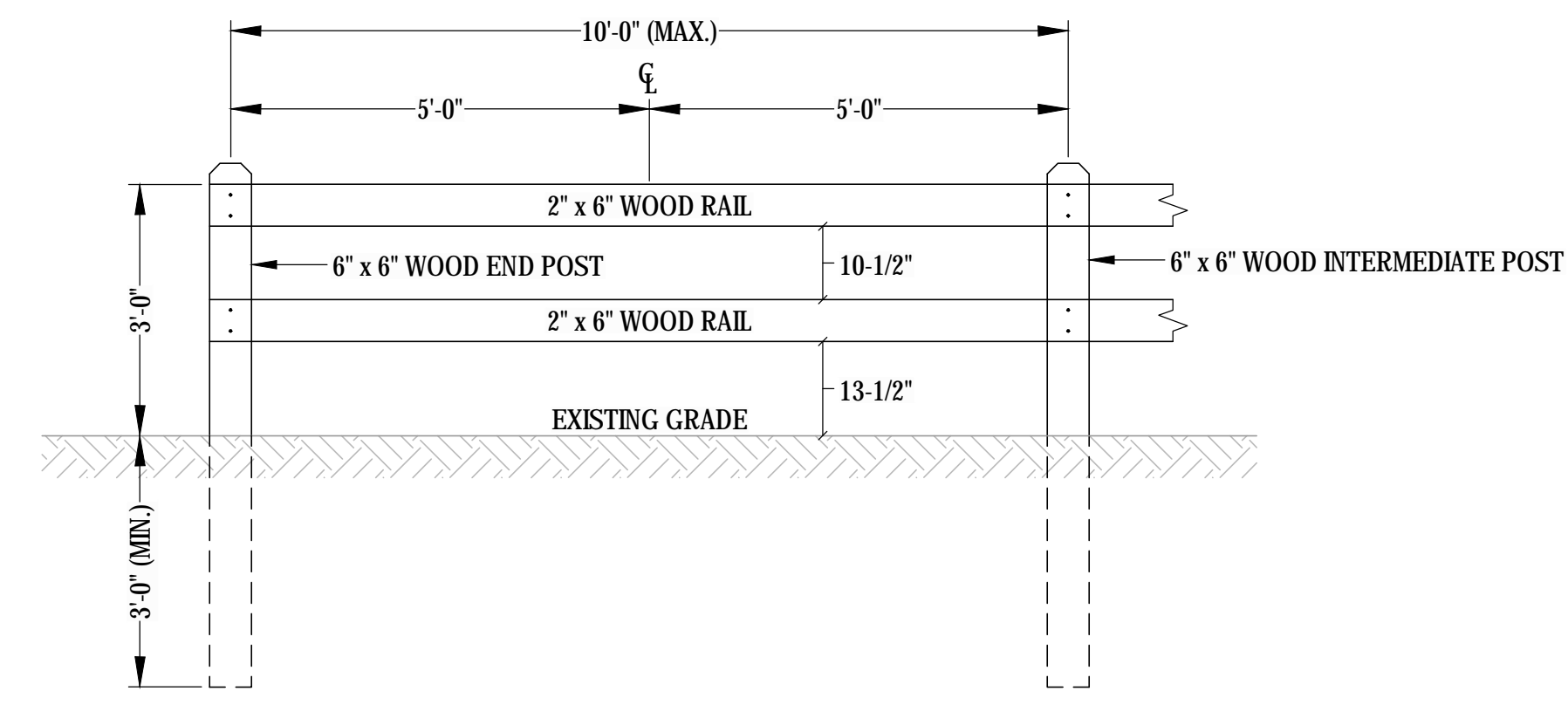
COPY



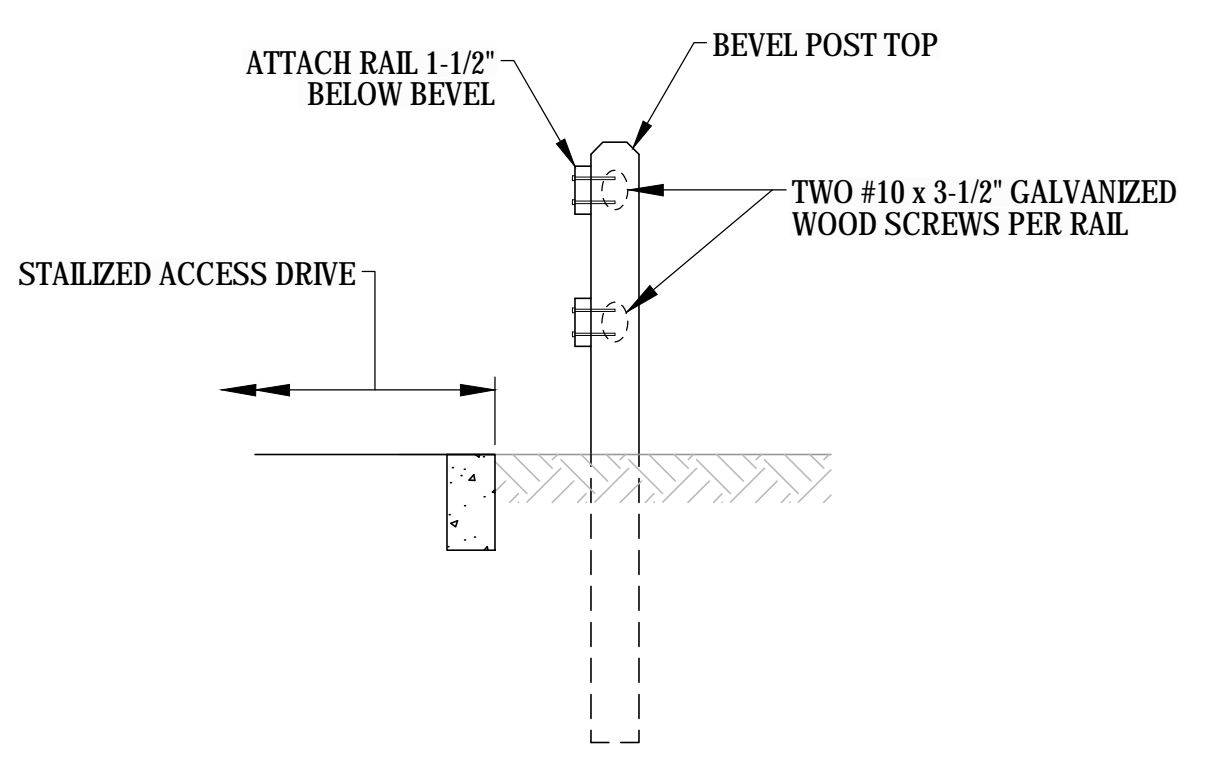
DOUBLE SWING GATE DETAIL
NOT TO SCALE



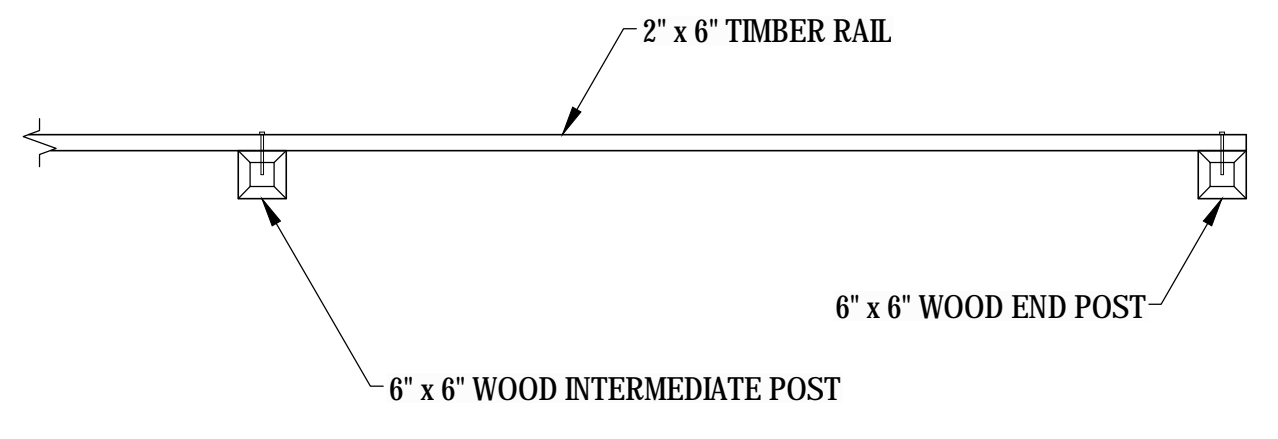
CHAIN LINK FENCE
NOT TO SCALE



FRONT VIEW



SIDE VIEW



TOP VIEW

- NOTES**
1. ALL WOOD SHALL BE PRESSURE TREATED.
 2. POST SPACING TO BE EQUIDISTANT AS MUCH AS POSSIBLE ALONG ENTIRE FENCE LENGTH.

POST AND RAIL FENCE
NOT TO SCALE

REV.	DATE	DESCRIPTION



GARDEN ROAD IMPROVEMENTS
HARMONY PHASE 3 - PARK TRACT "E" AND TRACT "GM"
MISCELLANEOUS DETAILS

Pegasus Engineering, LLC
 301 West SR 434, Suite 309
 Winter Springs, Florida 32708
 Office 407-992-9160
 Fax 407-358-5155
 State of Florida Board of Professional Engineers
 Certificate of Authorization No. 27770

JOB No.:	MSC-22055
DESIGNED BY:	GAT
DRAWN BY:	CAD
APPROVED BY:	DWH
DATE:	OCTOBER 2021

SHEET C12 OF C12

NOT A FINAL PLAN UNLESS SIGNED AND SEALED

PRELIMINARY
 DAVID W. HAMSTRA, P.E.
 REGISTRATION No. 38652
 DATE: October 14, 2021