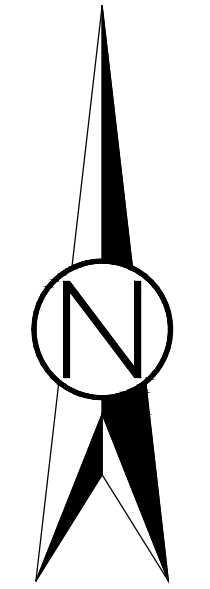
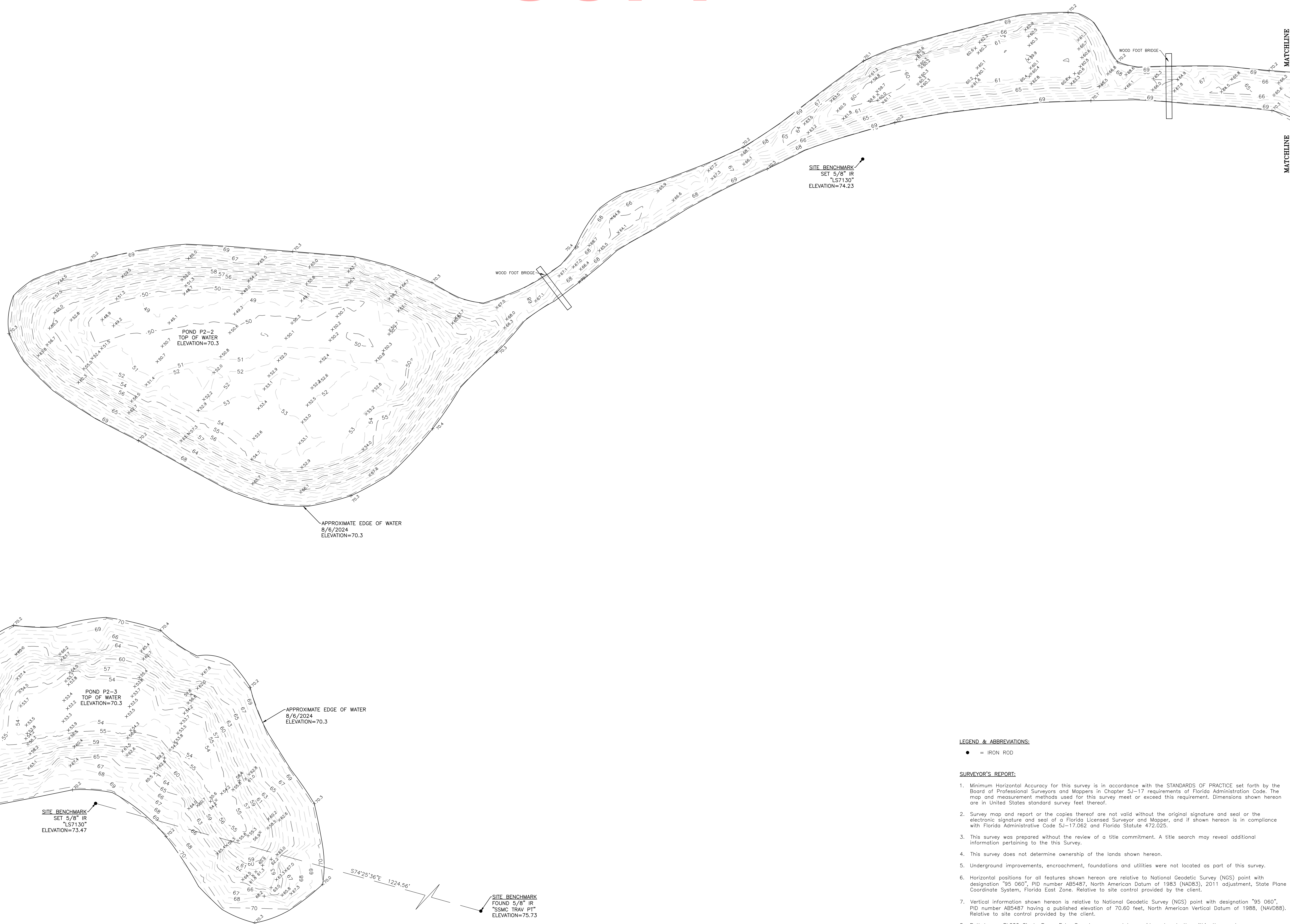


COPY



SCALE: 1" = 50'
0 25 50



LEGEND & ABBREVIATIONS:

- = IRON ROD

SURVEYOR'S REPORT:

1. Minimum Horizontal Accuracy for this survey is in accordance with the STANDARDS OF PRACTICE set forth by the Board of Professional Surveyors and Mappers in Chapter 5J-17 requirements of Florida Administration Code. The map and measurement methods used for this survey meet or exceed this requirement. Dimensions shown hereon are in United States standard survey feet thereof.
2. Survey map and report or the copies thereof are not valid without the original signature and seal or the electronic signature and seal of a Florida Licensed Surveyor and Mapper, and if shown hereon is in compliance with Florida Administrative Code 5J-17.062 and Florida Statute 472.025.
3. This survey was prepared without the review of a title commitment. A title search may reveal additional information pertaining to the this Survey.
4. This survey does not determine ownership of the lands shown hereon.
5. Underground improvements, encroachment, foundations and utilities were not located as part of this survey.
6. Horizontal positions for all features shown hereon are relative to National Geodetic Survey (NGS) point with designation "95 060", PID number AB5487, North American Datum of 1983 (NAD83), 2011 adjustment, State Plane Coordinate System, Florida East Zone. Relative to site control provided by the client.
7. Vertical information shown hereon is relative to National Geodetic Survey (NGS) point with designation "95 060", PID number AB5487 having a published elevation of 70.60 feet, North American Vertical Datum of 1988, (NAVD88). Relative to site control provided by the client.
8. Bathylotter BL200 Single Beam Echo Sounder was used to provide water depths within the ponds.

RESERVE GEOSPATIAL
Certified of Authorization Number: 0576
info@reservegis.com
221 Egmont Drive
Tampa, FL 33604

DATE:	
REGION:	

CERTIFIED TO:
PEGASUS ENGINEERING, LLC

TOPOGRAPHIC SURVEY
HARMONY P2-2 & P2-3
SCHOOLHOUSE ROAD, HARMONY, FLORIDA 34773

SITE: 24035
DRAWING: HARMONY P2-2_P2-3
SECTION: 18-26S-32E
DATE: 08/19/2024
SCALE: 1" = 50' DRAWN BY: JRH

SHEET
1 OF 1

Jesse Hodson, PSM
Florida License Number: 7474

COPY



SCALE: 1" = 150'



HARMONY
POND P2-2/P2-3
HARMONY COMMUNITY DEVELOPMENT DISTRICT
OSCEOLA COUNTY, FLORIDA



Pegasus
ENGINEERING
301 WEST STATE ROAD 434, SUITE 309
WINTER SPRINGS, FL 32708
TEL: 407-992-9160 • FAX: 407-358-5155
WEB: WWW.PEGASUSENGINEERING.NET

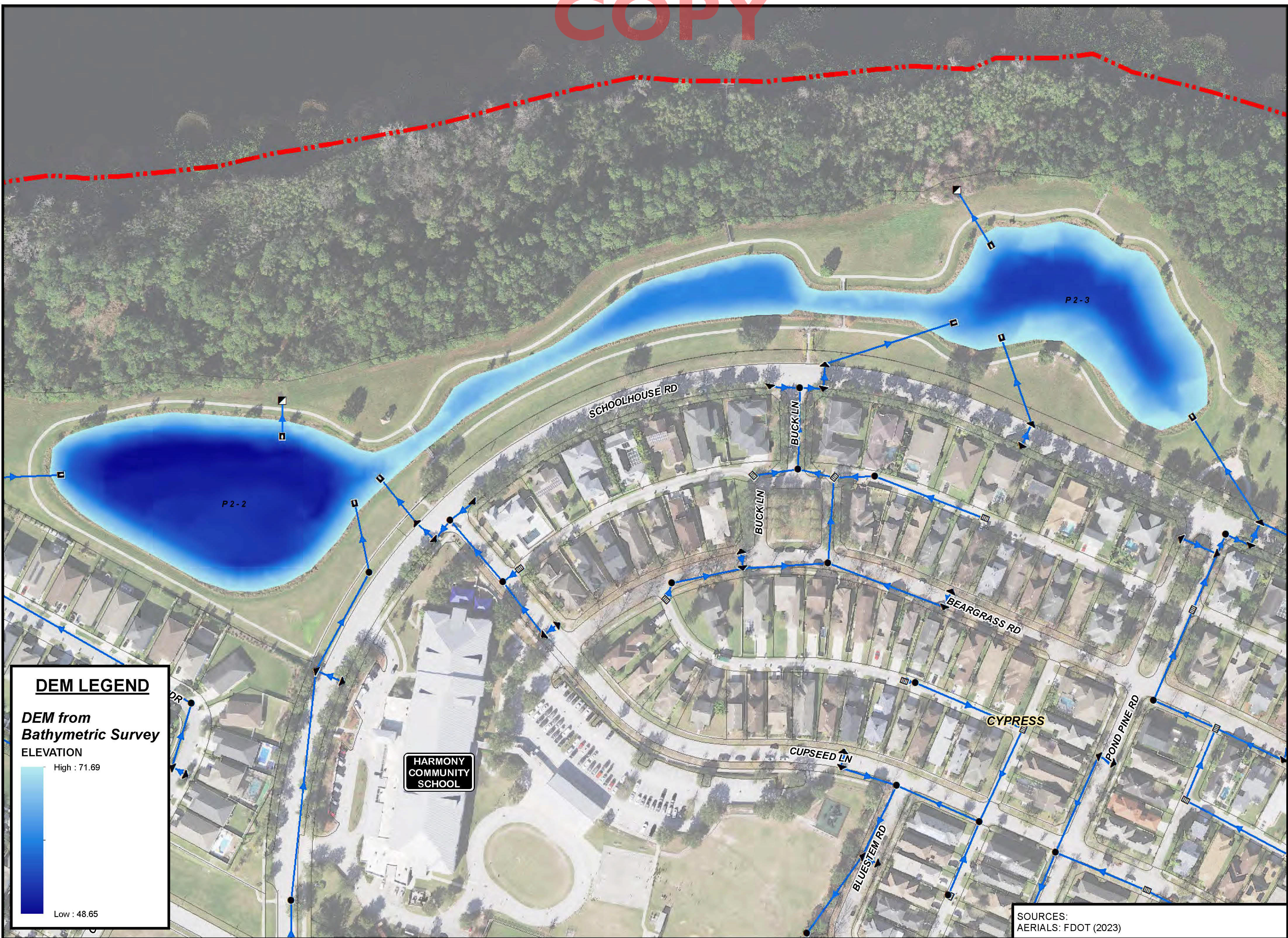
JOB NO.: MSC-22055
DATE: 10/2/2024

FIGURE

1

SOURCES:
AERIALS: FDOT (2023)

Document Path: L:\Projects_Drainage\CDDs\WSC-22055 Harmony District Engineer\04 - Figures and Exhibits\Figure 1 - Pond P2-2, P2-3.mxd



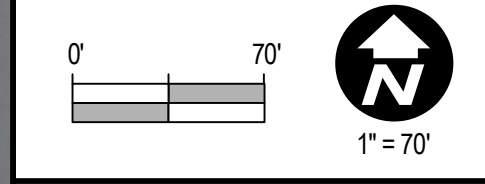
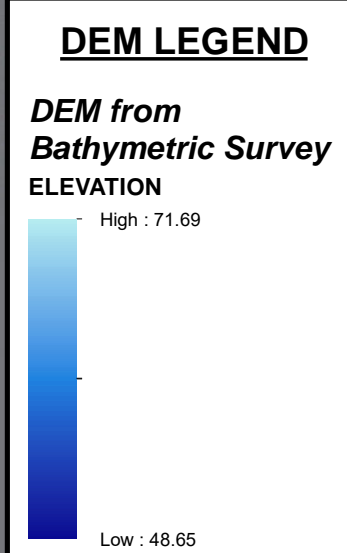
DEM LEGEND

DEM from Bathymetric Survey
ELEVATION

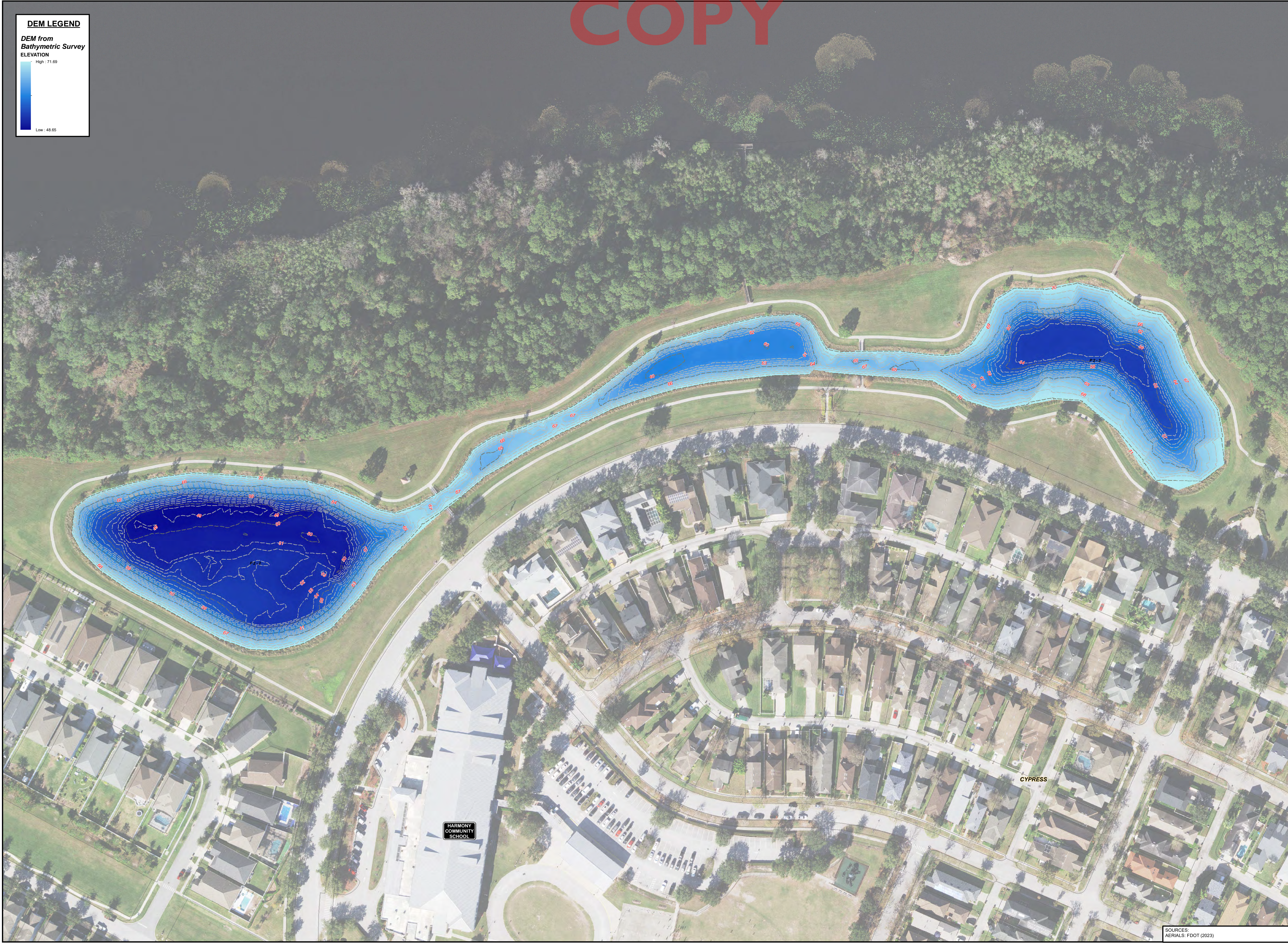
High : 71.69

Low : 48.65

COPY



**HARMONY COMMUNITY
DEVELOPMENT DISTRICT
POND P2-2/P2-3 BATHYMETRIC MAP
OSCEOLA COUNTY, FLORIDA**



Pegasus ENGINEERING
Pegasus Engineering, LLC
301 West SR 434, Suite 309
Winter Springs, Florida 32708
Office 407-992-9160
Fax 407-358-5155

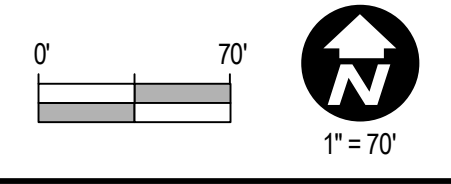
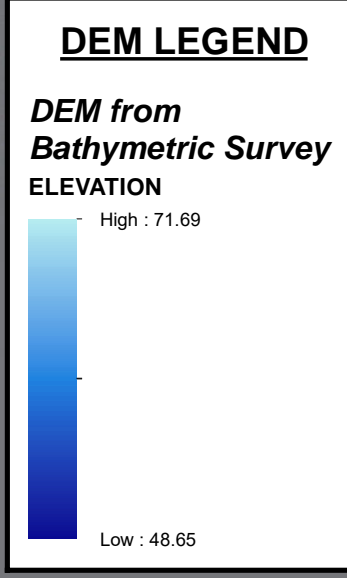
State of Florida Board of Professional Engineers
Certificate of Authorization No. 27770

JOB NO.: MSC-22055
DRAWN BY: DCG
APPROVED BY: DWH
DATE: 10/2/2024

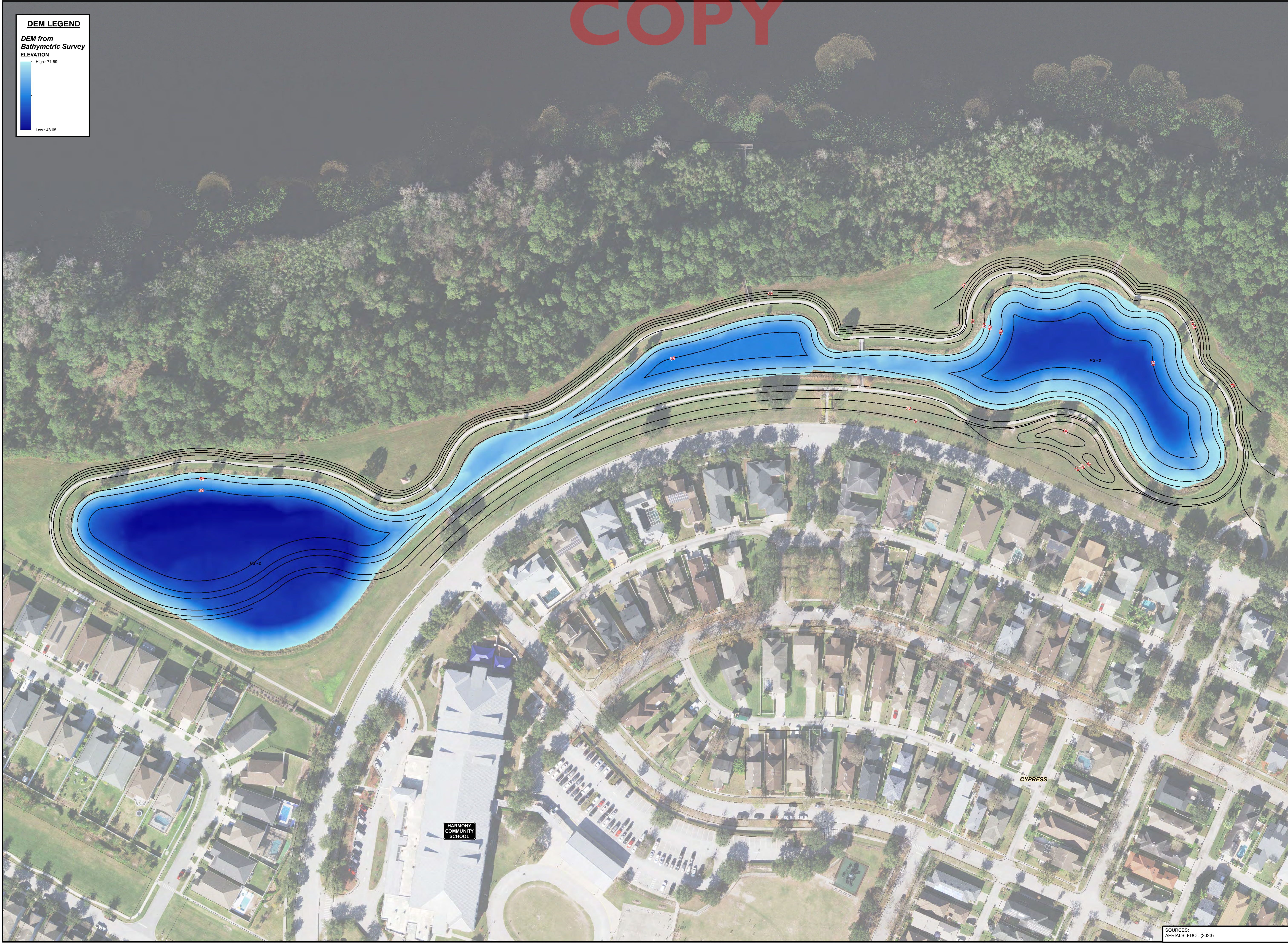
EXHIBIT
1

SOURCES:
AERIALS: FDOT (2023)

COPY



**HARMONY COMMUNITY
DEVELOPMENT DISTRICT
POND P2-2/P2-3 BATHYMETRIC MAP
OSCEOLA COUNTY, FLORIDA**



Pegasus ENGINEERING
Pegasus Engineering, LLC
301 West SR 434, Suite 309
Winter Springs, Florida 32708
Office 407-992-9160
Fax 407-358-5155

State of Florida Board of Professional Engineers
Certificate of Authorization No. 27770

JOB NO.: MSC-22055
DRAWN BY: DCG
APPROVED BY: DWH
DATE: 10/3/2024

**EXHIBIT
1**

SOURCES:
AERIALS: FDOT (2023)