




THE LAKES
AT HARMONY






THE LAKES
AT HARMONY

Harmony, FL 34773  Harmony

© 2015 Google

Imagery Date: 2/18/2015 28°11'53.88" N 81°08'



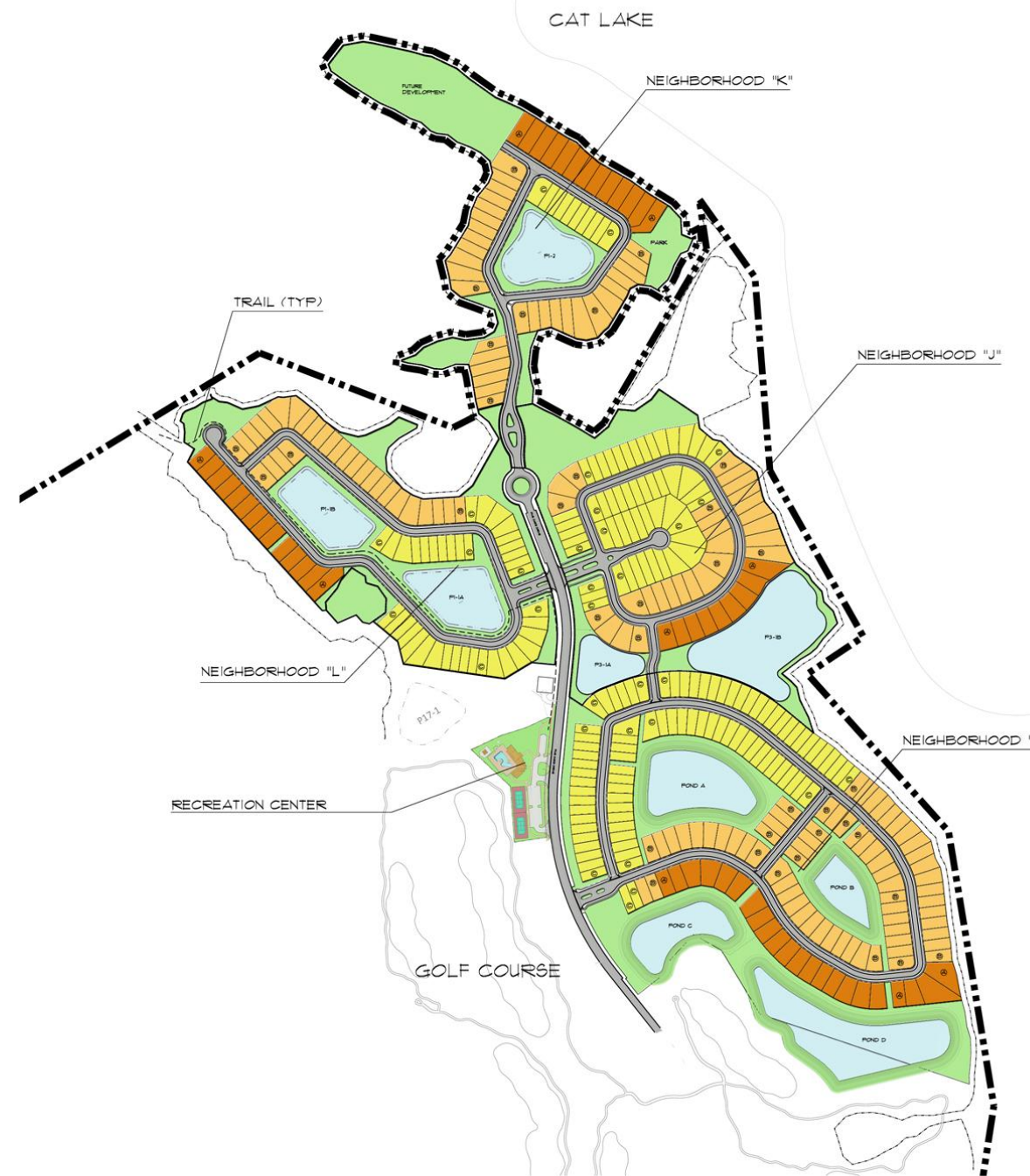


THE LAKES
AT HARMONY



- LEGEND:
- A LOTS (60')
 - B LOTS (50')
 - C LOTS (40')

TABULAR DATA				
NEIGHBORHOOD	A LOTS/ 60'X120'	B LOTS/ 50'X120'	C LOTS/ 40'X120'	TOTALS NUMBER OF LOTS
I	25	64	83	172
J	12	25	53	90
K	13	31	10	54
L	14	28	38	80
TOTALS	64	148	184	396



SITE PLAN
HARMONY NEIGHBORHOODS I, J, K AND L
HARMONY, FLORIDA

SCALE: 1"=200'
DATE: 10-26-2015
FOREMAN CONSULTING, INC.
10000 N. W. 11th St., Suite 100
Miami Lakes, FL 33014
PH: 781.424.1111 FAX: 781.424.1112




THE LAKES
AT HARMONY



LANDSCAPE PLAN

HARMONY: RECREATION CENTER

HARMONY, FLORIDA

SCALE: 1" = 30' x 0"
 DATE: 10-26-2015



F FOREMAN CONSULTING, INC.

- LANDSCAPE ARCHITECTURE
- DEVELOPMENT CONSULTING
- LAND PLANNING

384 LAKAY PLACE, LONGWOOD, FL 32119
 407-854-8278



HARMONY NEIGHBORHOOD 'I'

COMMUNITY SIGNAGE AND ENTRY FEATURES

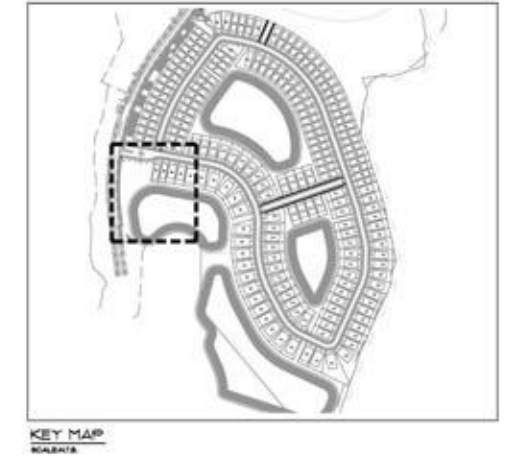
CITY OF HARMONY, FLORIDA

DATE: 08-25-2015

F FOREMAN CONSULTING, INC.
 ■ LANDSCAPE ARCHITECTURE
 ■ DEVELOPMENT CONSULTING
 ■ LAND PLANNING
 184 LUKAY PLACE, LONGWOOD, FL 32119
 407-854-4274

LEGEND:

- CDD
- HOA



KEY MAP
HARBOR



TRACT DELINEATION PLAN

SOUTH LAKES AT HARMONY

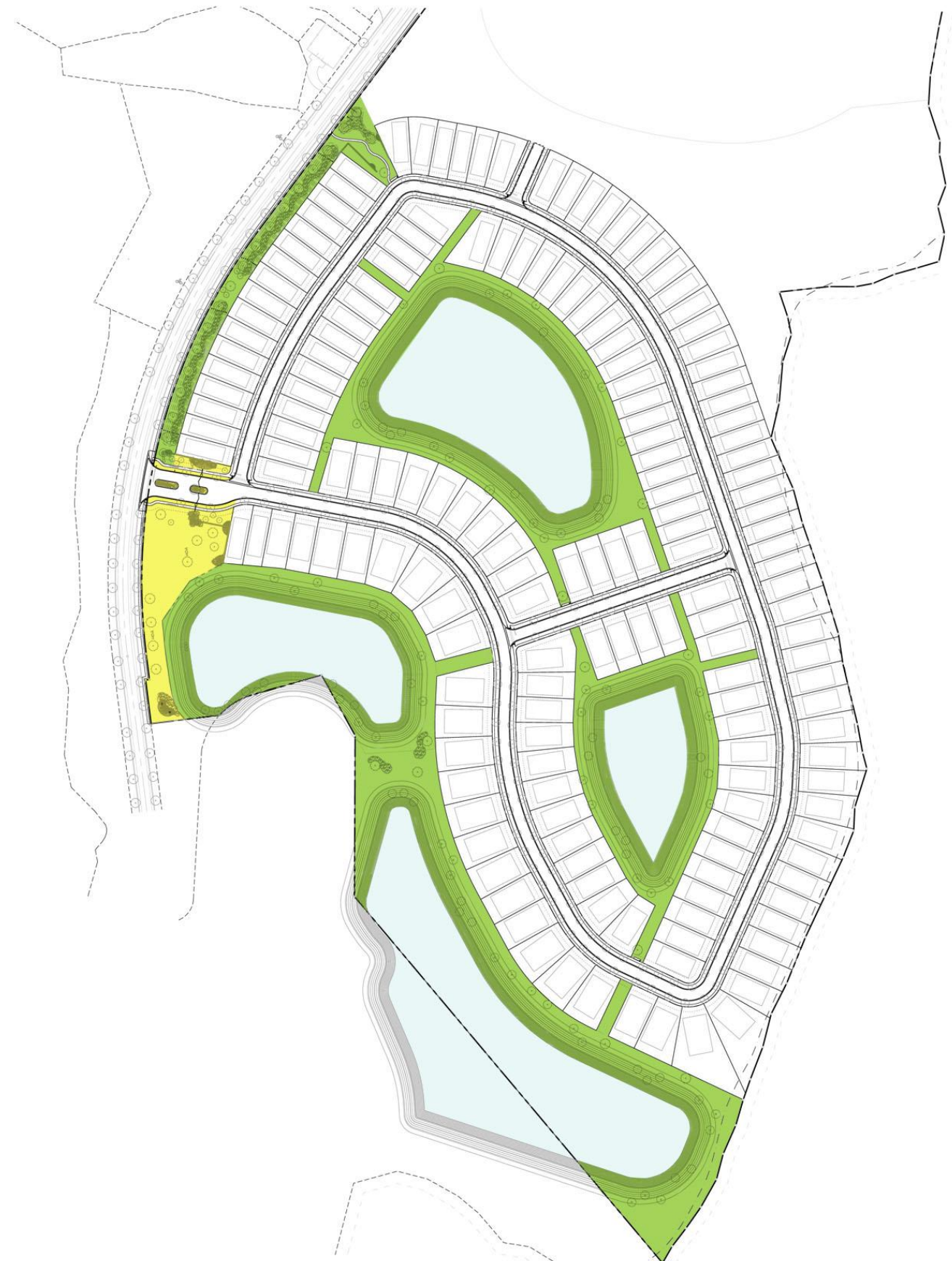
HARMONY, FLORIDA

SCALE: 1"=20'-0"
DATE: 10-26-2015



F FOREMAN CONSULTING, INC.
LANDSCAPE ARCHITECTURE
DEVELOPMENT CONSULTING
LAND PLANNING
164 LAKAY PLACE, LONGWOOD, FL 32719
407-884-4777

LEGEND:
CDD
HOA



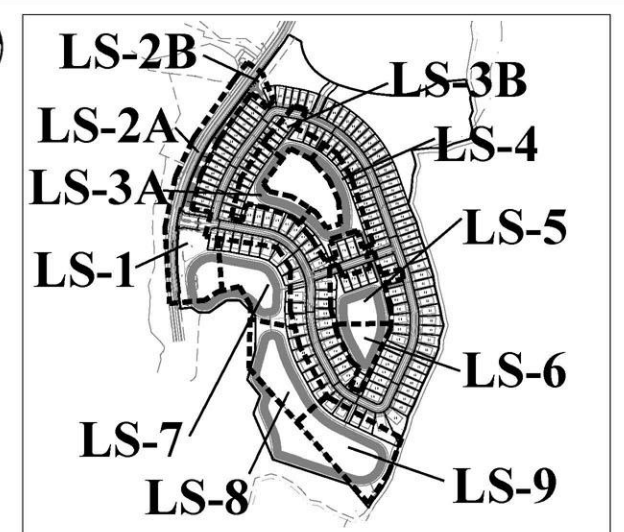
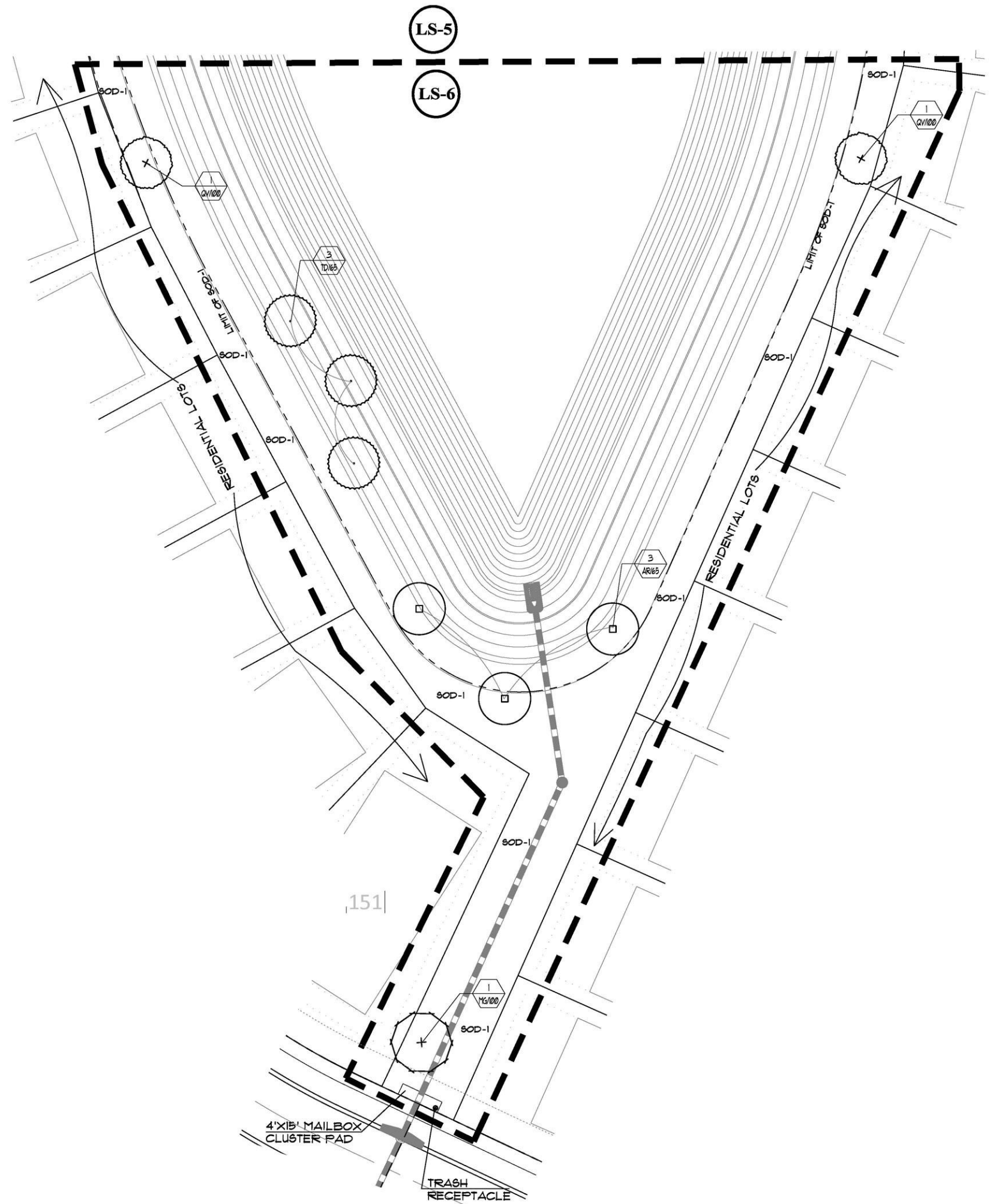
OVERALL PLAN

HARMONY 'I' DELINEATION PLAN

HARMONY, FLORIDA

SCALE: 1"=80'
DATE: 10-28-2015





KEY MAP
SCALES:

NOTE:
 THESE LANDSCAPE PLANS ARE IN ADDITION TO THE OSCEOLA COUNTY MINIMUM CODE REQUIREMENTS AND WILL BE IMPLEMENTED AT THE DISCRETION OF THE OWNER.

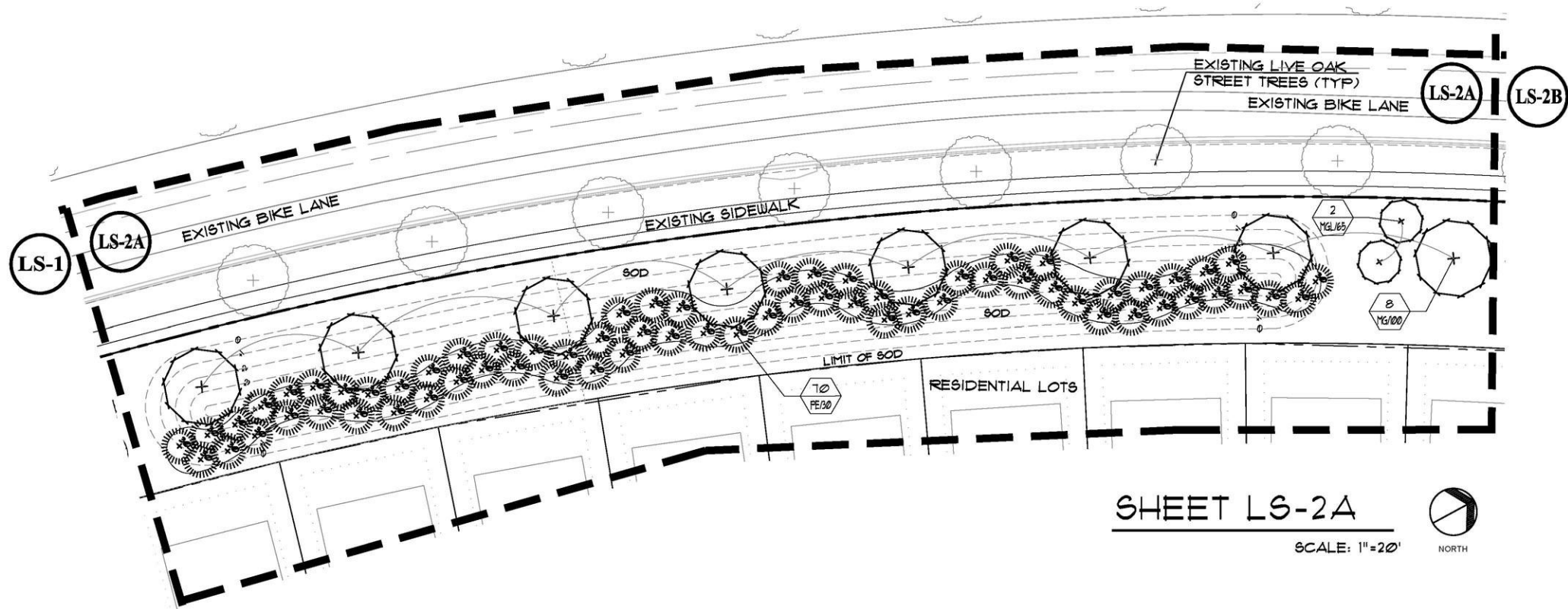
FOREMAN CONSULTING, INC.
 LANDSCAPE ARCHITECTURE
 DEVELOPMENT CONSULTING
 LAND PLANNING
 2146 LAKAY PLACE, LONGWOOD, FL 32779
 (407) 884-0818

DESCRIPTION	NO.	DATE	BY	CHK	DATE

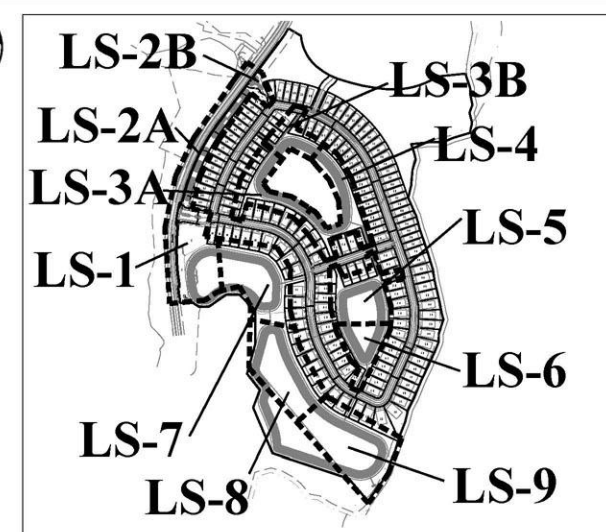
HARMONY NEIGHBORHOOD "I"
 HARMONY, FLORIDA
LANDSCAPE PLAN

DATE:	10/05/15
SCALE:	1"=20'
DRAWN BY:	RYM
DESIGNED BY:	KJF
CHECKED BY:	KJF

SHEET NO.
LS-6

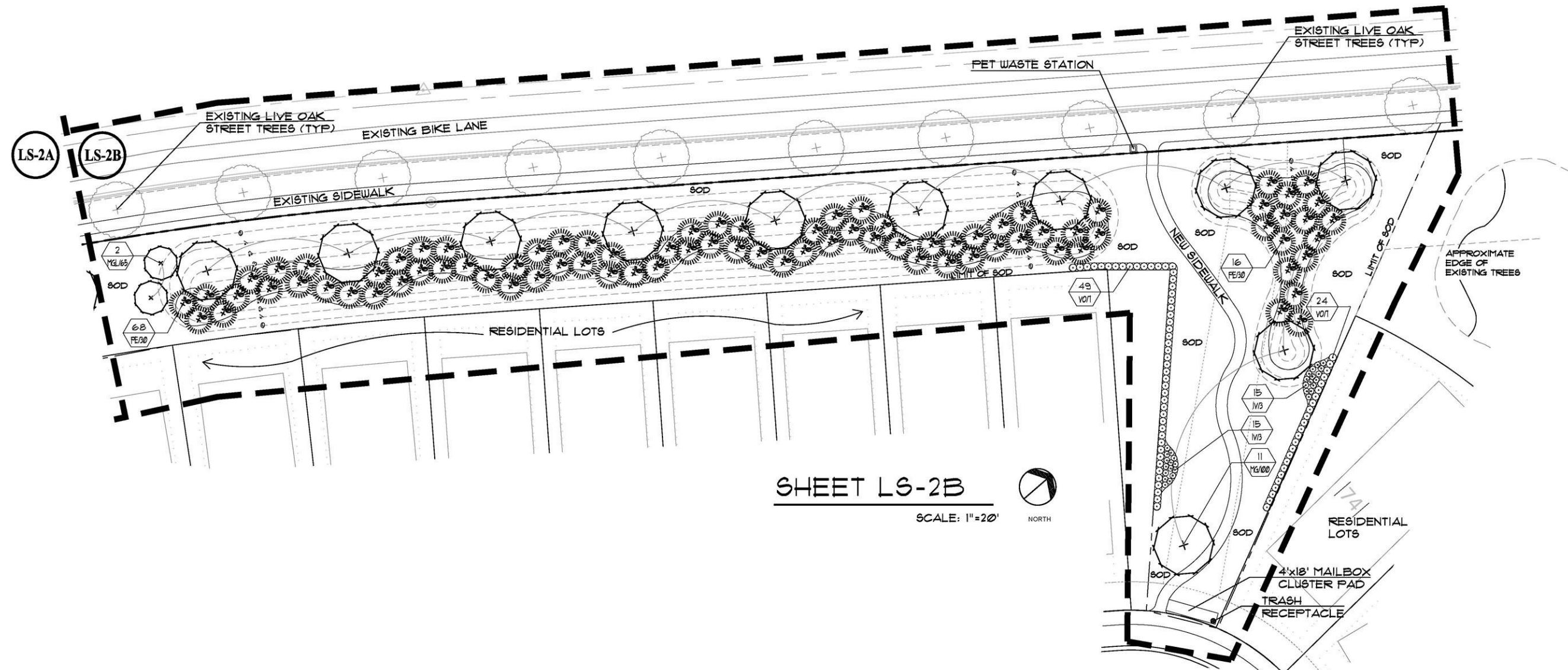


SHEET LS-2A
SCALE: 1"=20'



KEY MAP
SCALE: 1"=20'

NOTE:
THESE LANDSCAPE PLANS ARE IN ADDITION TO THE OSCEOLA COUNTY MINIMUM CODE REQUIREMENTS AND WILL BE IMPLEMENTED AT THE DISCRETION OF THE OWNER.



SHEET LS-2B
SCALE: 1"=20'

FOREMAN CONSULTING, INC.
LANDSCAPE ARCHITECTURE
LAND DEVELOPMENT CONSULTING
LAND PLANNING
2946 LAGAY PLACE, LONGWOOD, FL 32779
www.foremaninc.com | 407.884.4978

LANDSCAPE ARCHITECT
KENT FOREMAN, P.L.A.

NO.	DATE	BY	DESCRIPTION

HARMONY NEIGHBORHOOD "I"
HARMONY, FLORIDA
LANDSCAPE PLAN

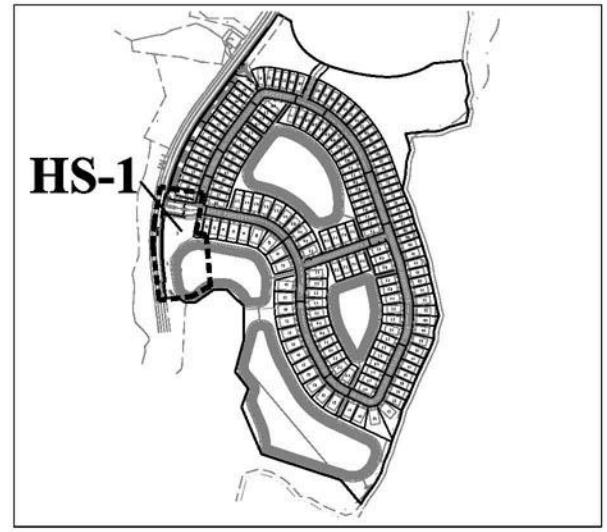
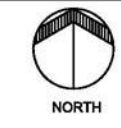
DATE:	10/05/15
SCALE:	1"=20'
DRAWN BY:	RYM
DESIGNED BY:	KJF
CHECKED BY:	KJF

SHEET NO.
LS-2

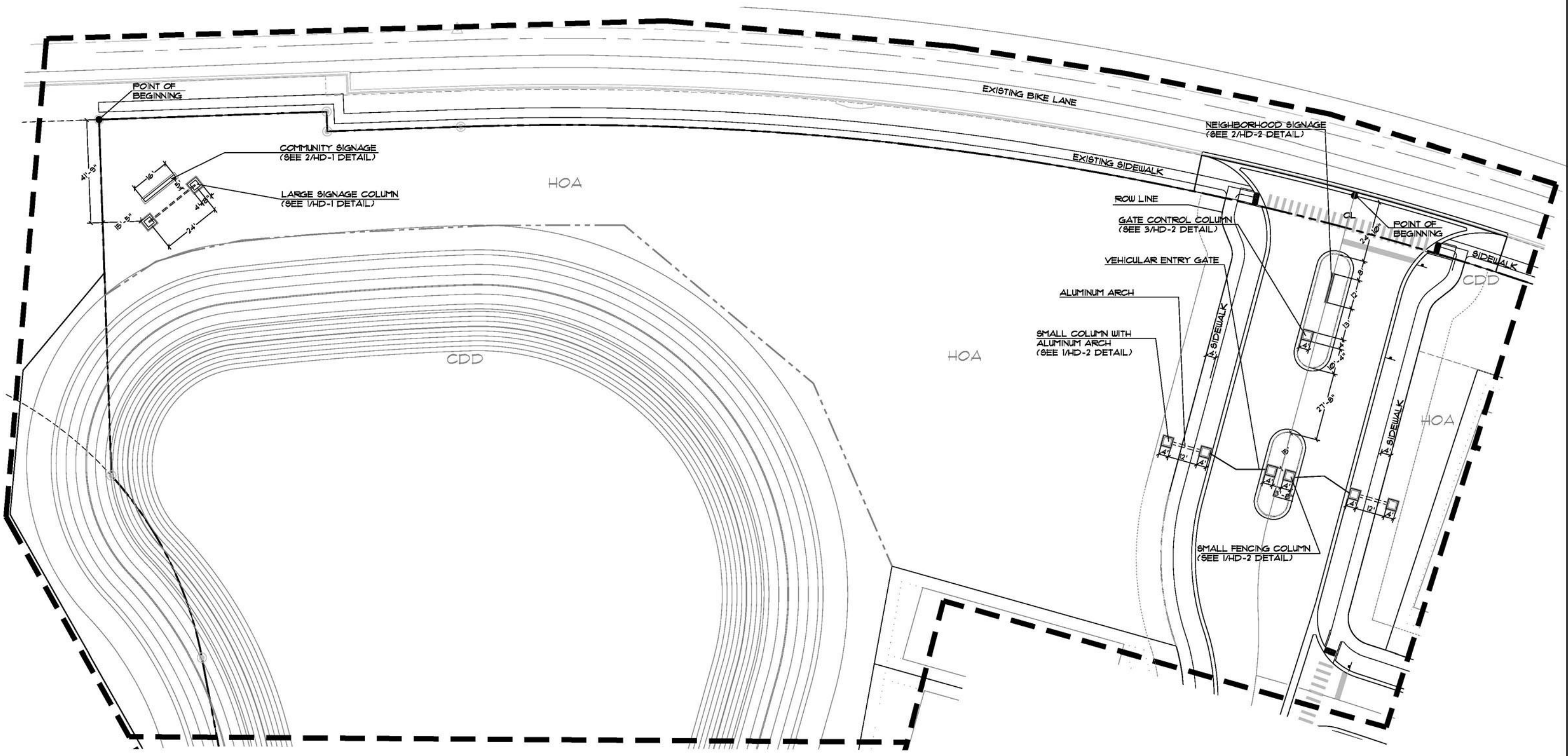
SCHEDULE OF DRAWINGS	
HS-1	HARDSCAPE PLAN
HD-1	HARDSCAPE DETAILS
HD-2	HARDSCAPE DETAILS
LS-1	LANDSCAPE PLAN
LS-2	LANDSCAPE PLAN
LS-3	LANDSCAPE PLAN
LS-4	LANDSCAPE PLAN
LS-5	LANDSCAPE PLAN
LS-6	LANDSCAPE PLAN
LS-7	LANDSCAPE PLAN
LS-8	LANDSCAPE PLAN
LS-9	LANDSCAPE PLAN
LD-1	LANDSCAPE DETAILS & PLANT LIST



LOCATION MAP
SCALE: N/A



KEY MAP
SCALE: N/A



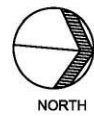
FOREMAN CONSULTING, INC.
 LANDSCAPE ARCHITECTURE
 DEVELOPMENT CONSULTING
 LAND PLANNING
 344 S. LAKESHORE BLVD., SUITE 100
 AUSTIN, TEXAS 78746
 (512) 426-7070

DESCRIPTION	DATE	BY	REVISIONS	
			NO.	DATE

HARMONY NEIGHBORHOOD "I"
 HARMONY, FLORIDA
 HARDSCAPE PLAN

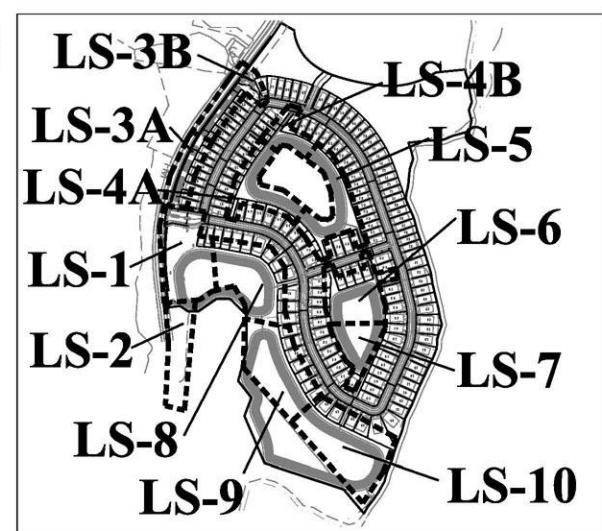
DATE: 10/05/15
 SCALE: 1"=20'
 DRAWN BY: RYM
 DESIGNED BY: KJF
 CHECKED BY: KJF

SHEET NO.
HS-1

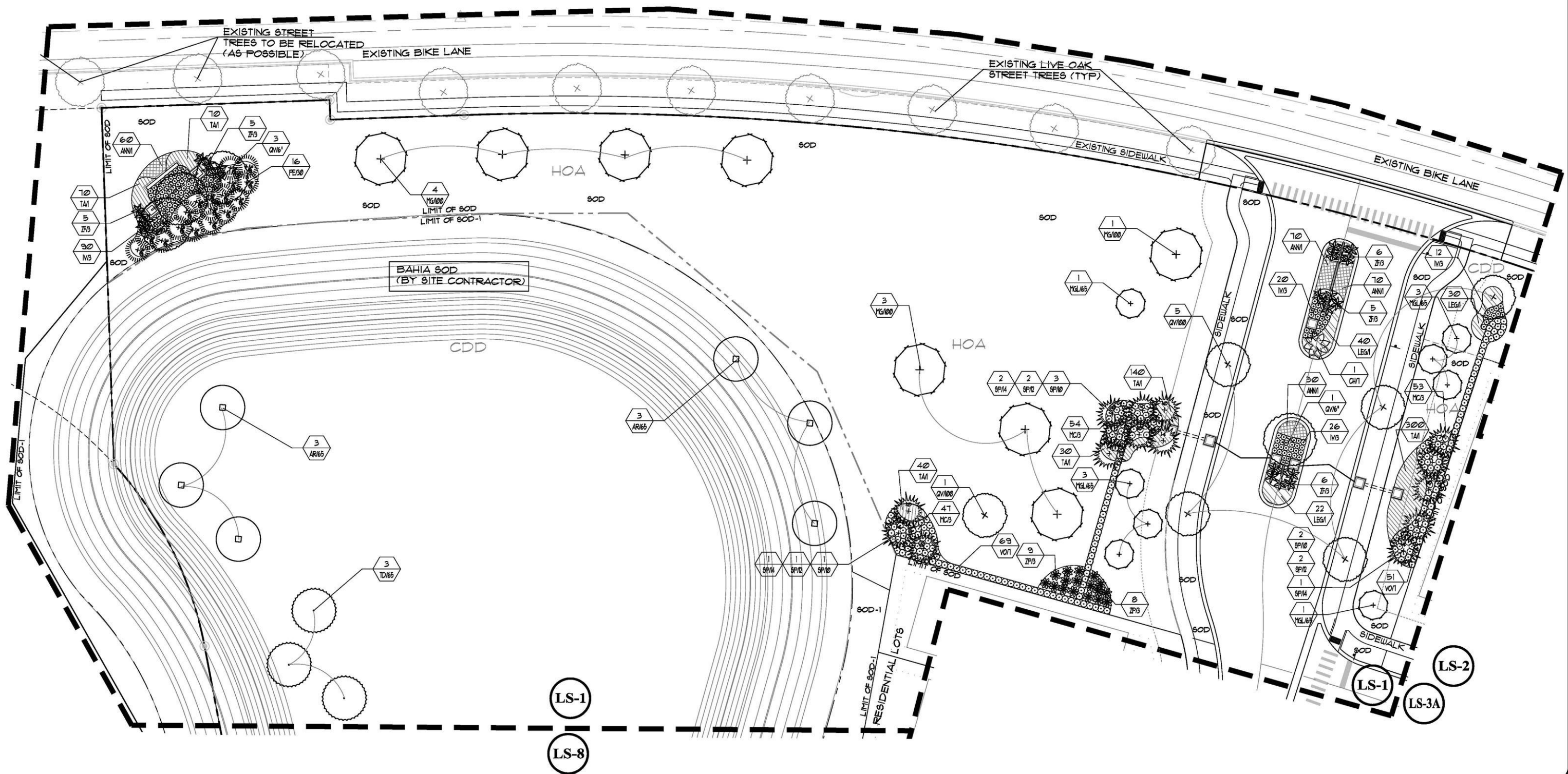


NOTE:
COORDINATE ALL INSTALLATIONS ADJACENT TO GOLF COURSE WITH LANDSCAPE ARCHITECT AND GOLF COURSE SUPERINTENDENT

NOTE:
THESE LANDSCAPE PLANS ARE IN ADDITION TO THE OSCEOLA COUNTY MINIMUM CODE REQUIREMENTS AND WILL BE IMPLEMENTED AT THE DISCRETION OF THE OWNER.



KEY MAP
SCALE: 1/8" = 1'-0"



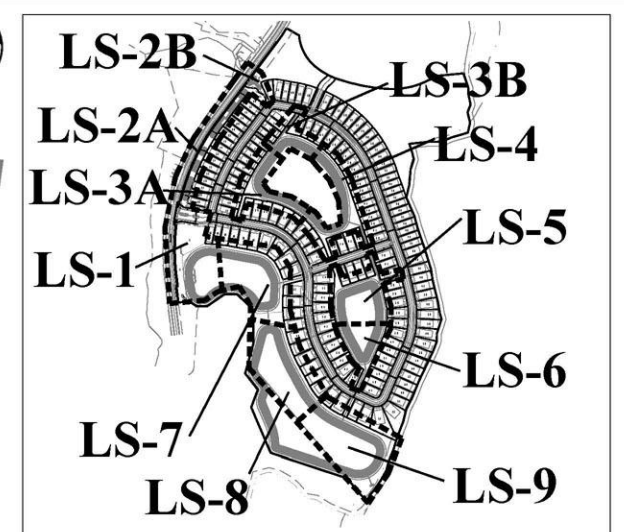
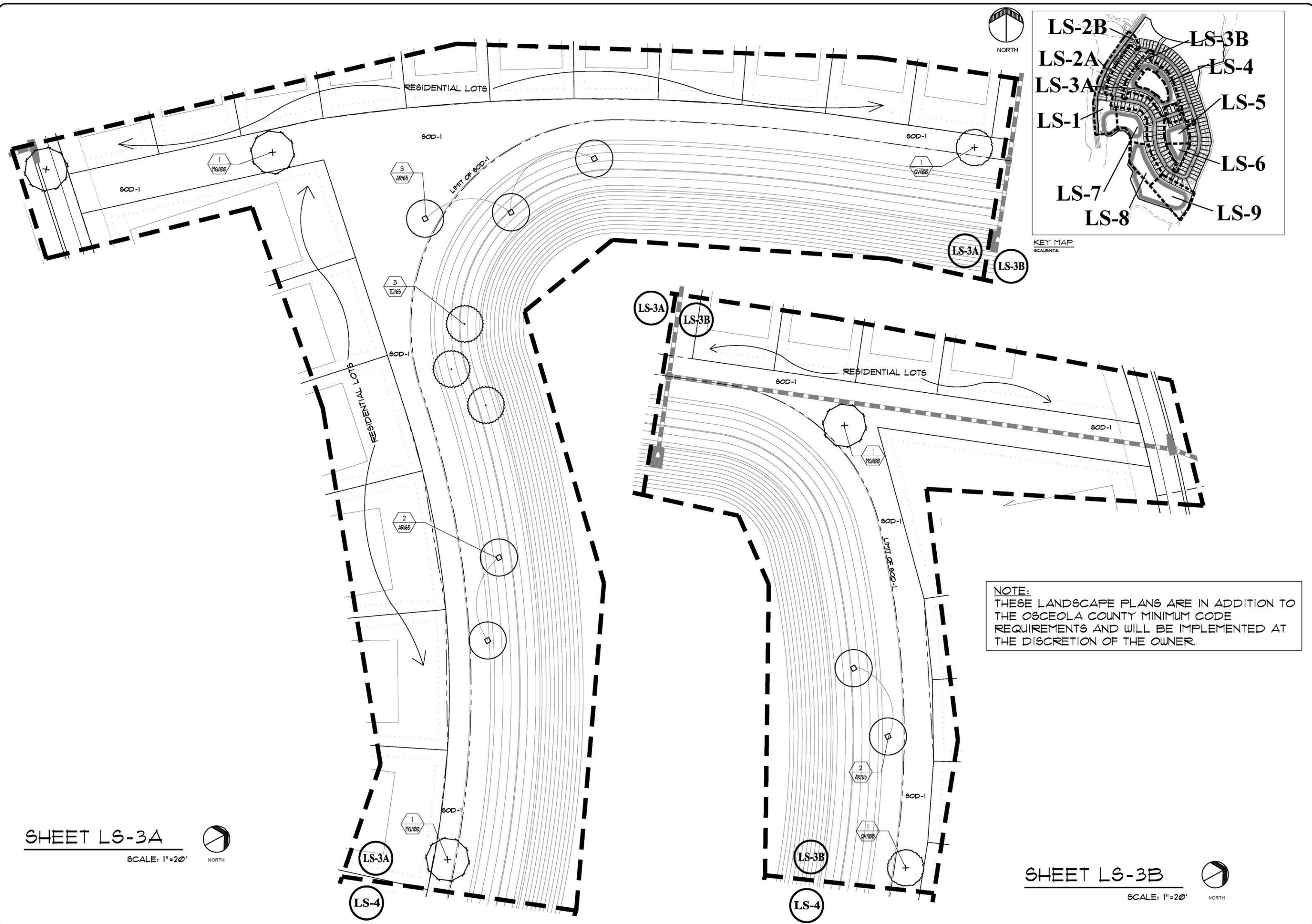
FOREMAN CONSULTING, INC.
 LANDSCAPE ARCHITECTURE
 DEVELOPMENT CONSULTING
 LAND PLANNING
 346 S. LAKESHORE BLVD., SUITE 100
 APOE, FLORIDA 32117-2642

DESCRIPTION	DATE	BY

HARMONY NEIGHBORHOOD "I"
 HARMONY, FLORIDA
 LANDSCAPE PLAN

DATE: 10/05/15
 SCALE: 1/8" = 1'-0"
 DRAWN BY: RYM
 DESIGNED BY: KJF
 CHECKED BY: KJF

SHEET NO.
 LS-1



KEY MAP
SCALE: 1"=20'

NOTE:
THESE LANDSCAPE PLANS ARE IN ADDITION TO THE OSCEOLA COUNTY MINIMUM CODE REQUIREMENTS AND WILL BE IMPLEMENTED AT THE DISCRETION OF THE OWNER.

SHEET LS-3A
SCALE: 1"=20'
NORTH

SHEET LS-3B
SCALE: 1"=20'
NORTH

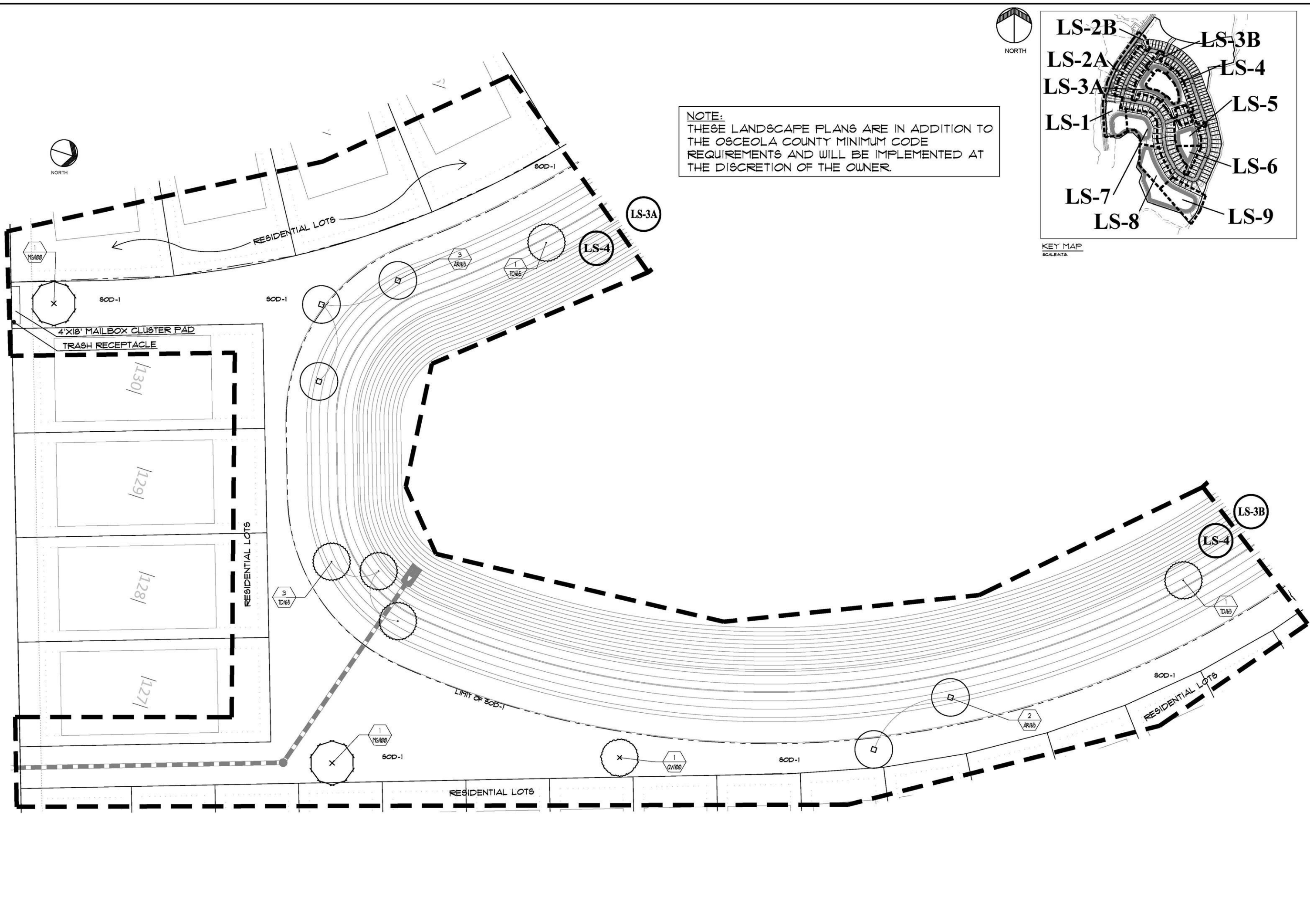
FOREMAN CONSULTING, INC.
LANDSCAPE ARCHITECTURE
DEVELOPMENT CONSULTING
LAND PLANNING
2946 LAGAY PLACE, LONGWOOD, FL 32779
www.foremaninc.com (407) 884-0710

DESCRIPTION	NO.	DATE	DESIGNED BY	CHECKED BY

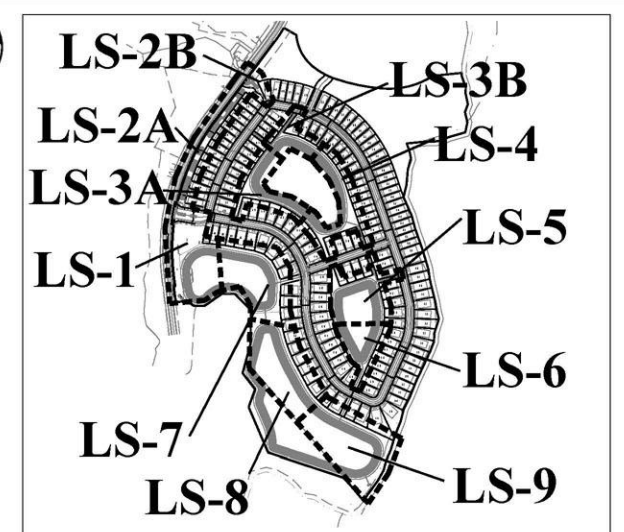
HARMONY NEIGHBORHOOD "I"
HARMONY, FLORIDA
LANDSCAPE PLAN

DATE: 10/05/15
SCALE: 1"=20'
DRAWN BY: RYM
DESIGNED BY: KJF
CHECKED BY: KJF

SHEET NO.
LS-3



NOTE:
 THESE LANDSCAPE PLANS ARE IN ADDITION TO THE OSCEOLA COUNTY MINIMUM CODE REQUIREMENTS AND WILL BE IMPLEMENTED AT THE DISCRETION OF THE OWNER.



KEY MAP
 SCALE: 1/8" = 1'-0"

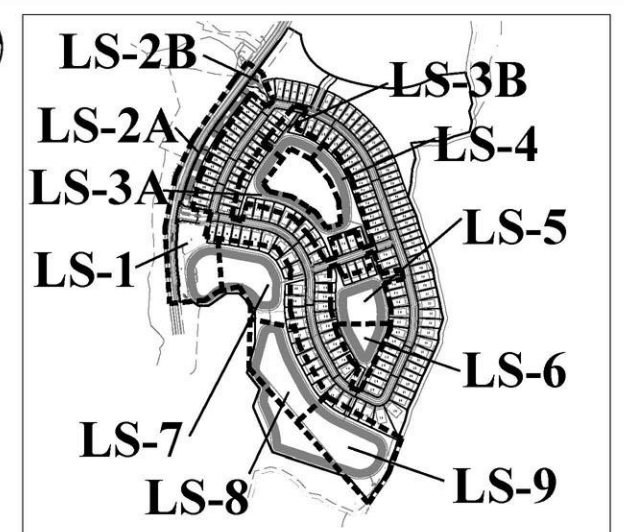
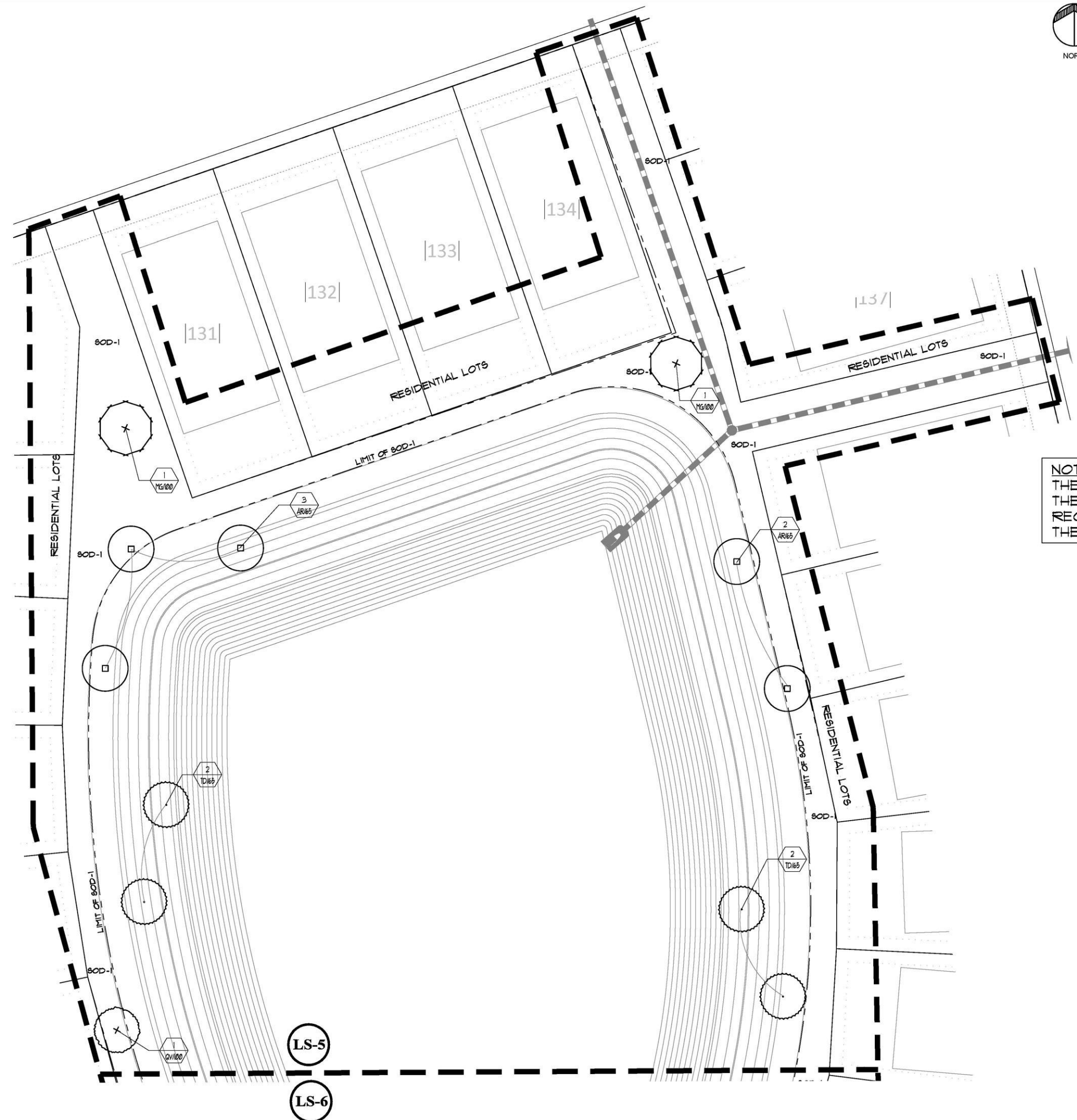
FOREMAN CONSULTING, INC.
 LANDSCAPE ARCHITECTURE
 DEVELOPMENT CONSULTING
 LAND PLANNING
 2146 LAGAY PLACE, LONGWOOD, FL 32779
 (407) 884-0818

DESCRIPTION	NO.	DATE	CHK BY	BY

HARMONY NEIGHBORHOOD "I"
 HARMONY, FLORIDA
 LANDSCAPE PLAN

DATE:	10/05/15
SCALE:	1" = 20'
DRAWN BY:	RYM
DESIGNED BY:	KJF
CHECKED BY:	KJF

SHEET NO.
LS-4



KEY MAP
SCALE: 1/8" = 1'-0"

NOTE:
 THESE LANDSCAPE PLANS ARE IN ADDITION TO THE OSCEOLA COUNTY MINIMUM CODE REQUIREMENTS AND WILL BE IMPLEMENTED AT THE DISCRETION OF THE OWNER.

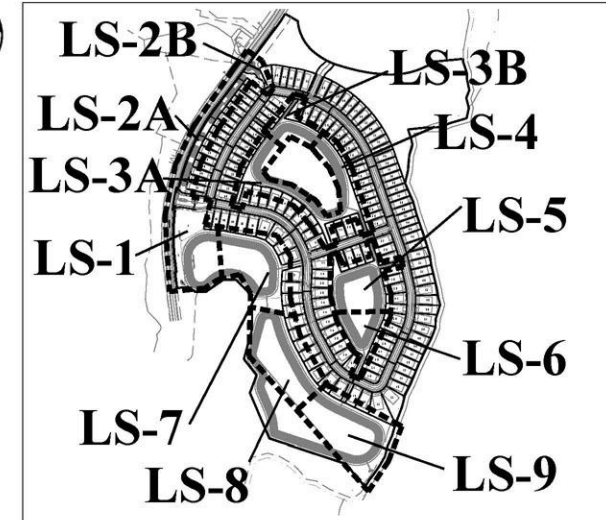
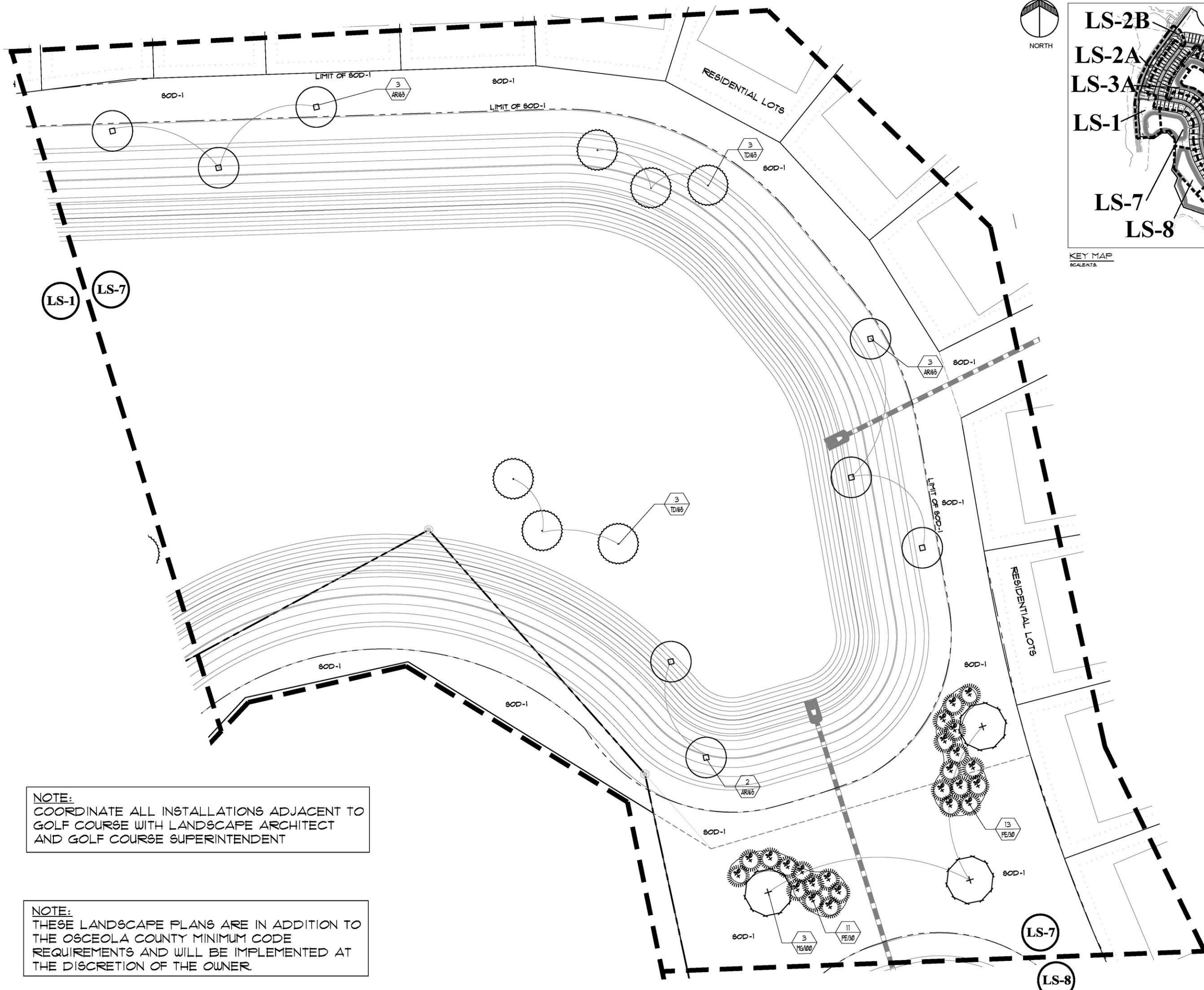
FOREMAN CONSULTING, INC.
 LANDSCAPE ARCHITECTURE
 DEVELOPMENT CONSULTING
 LAND PLANNING
 2146 LAGAY PLACE, LONGWOOD, FL 32779
 (407) 884-0710

DESCRIPTION	DATE	BY	CHK

HARMONY NEIGHBORHOOD "I"
 HARMONY, FLORIDA
LANDSCAPE PLAN

DATE: 10/05/15
 SCALE: 1" = 20'
 DRAWN BY: RYM
 DESIGNED BY: KJF
 CHECKED BY: KJF

SHEET NO.
LS-5



KEY MAP
SCALE: 1/8" = 1'-0"

NOTE:
COORDINATE ALL INSTALLATIONS ADJACENT TO GOLF COURSE WITH LANDSCAPE ARCHITECT AND GOLF COURSE SUPERINTENDENT

NOTE:
THESE LANDSCAPE PLANS ARE IN ADDITION TO THE OSCEOLA COUNTY MINIMUM CODE REQUIREMENTS AND WILL BE IMPLEMENTED AT THE DISCRETION OF THE OWNER.

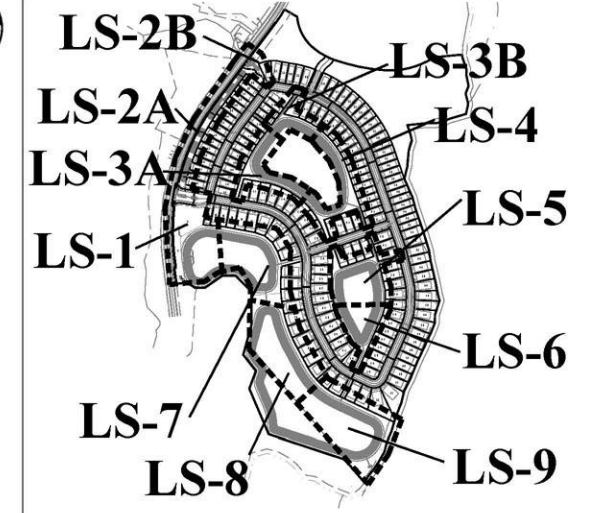
FOREMAN CONSULTING, INC.
LANDSCAPE ARCHITECTURE
DEVELOPMENT CONSULTING
LAND PLANNING
246 LAGAY PLACE, LONGWOOD, FL 32779
Phone: (407) 884-0719
www.foremanconsulting.com

DESCRIPTION	NO.	DATE	BY	CHK	REV.

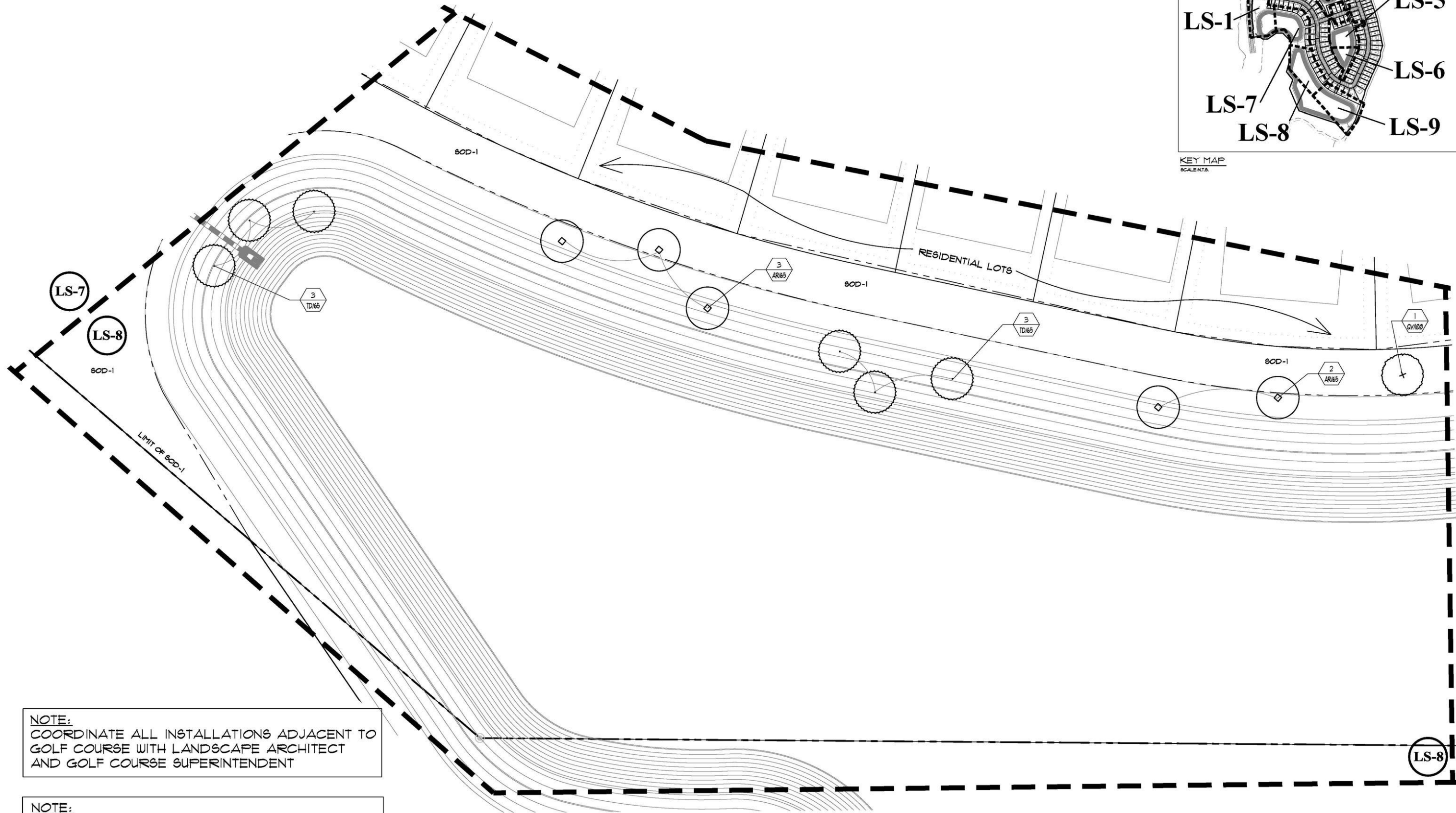
HARMONY NEIGHBORHOOD "I"
HARMONY, FLORIDA
LANDSCAPE PLAN

DATE: 10/05/15
SCALE: 1" = 20'
DRAWN BY: RYM
DESIGNED BY: KJF
CHECKED BY: KJF

SHEET NO.
LS-7



KEY MAP
SCALE: 1/8" = 1'-0"



NOTE:
COORDINATE ALL INSTALLATIONS ADJACENT TO
GOLF COURSE WITH LANDSCAPE ARCHITECT
AND GOLF COURSE SUPERINTENDENT

NOTE:
THESE LANDSCAPE PLANS ARE IN ADDITION TO
THE OSCEOLA COUNTY MINIMUM CODE
REQUIREMENTS AND WILL BE IMPLEMENTED AT
THE DISCRETION OF THE OWNER.

FOREMAN
CONSULTING, INC.
LANDSCAPE ARCHITECTURE
DEVELOPMENT CONSULTING
LAND PLANNING
2146 LAGAY PLACE, LONGWOOD, FL 32779
407-884-0878

DESCRIPTION	NO.	DATE	CHK BY	BY

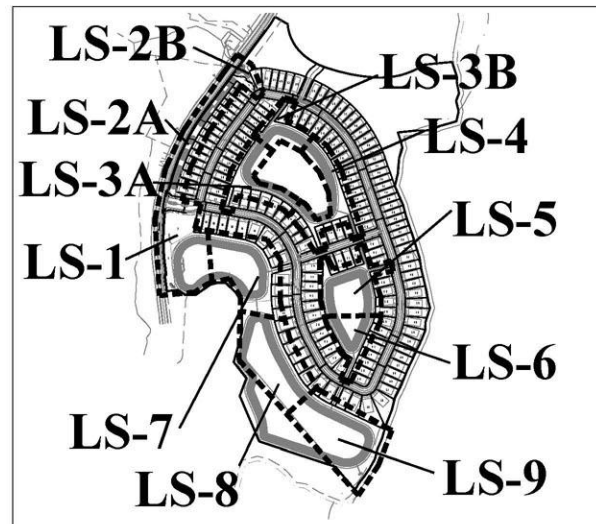
HARMONY
NEIGHBORHOOD "1"
HARMONY, FLORIDA
LANDSCAPE PLAN

DATE: 10/05/15
SCALE: 1" = 20'
DRAWN BY: RYM
DESIGNED BY: KJF
CHECKED BY: KJF

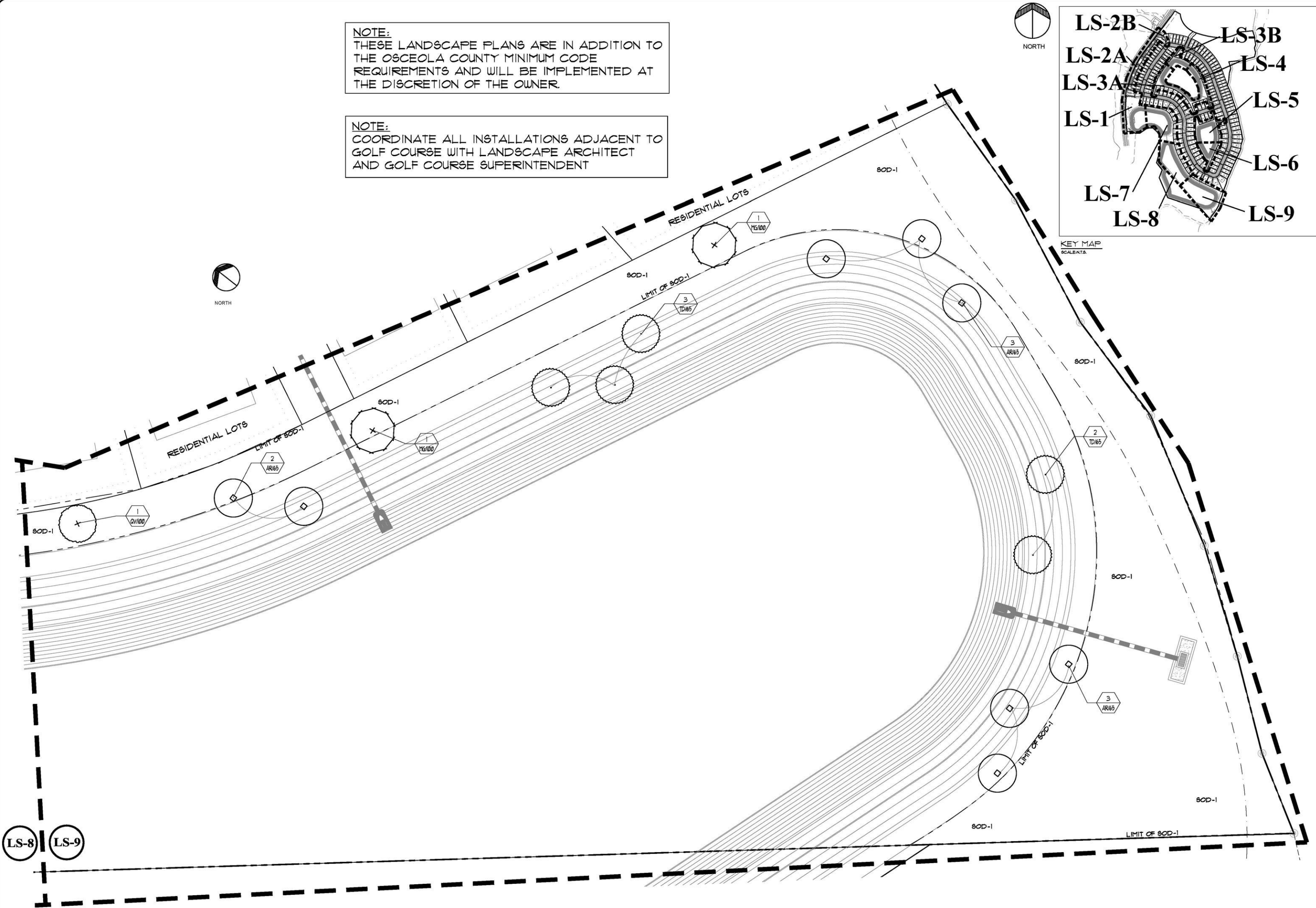
SHEET NO.
LS-8

NOTE:
 THESE LANDSCAPE PLANS ARE IN ADDITION TO THE OSCEOLA COUNTY MINIMUM CODE REQUIREMENTS AND WILL BE IMPLEMENTED AT THE DISCRETION OF THE OWNER.

NOTE:
 COORDINATE ALL INSTALLATIONS ADJACENT TO GOLF COURSE WITH LANDSCAPE ARCHITECT AND GOLF COURSE SUPERINTENDENT



KEY MAP
 SCALE: 1/8" = 1'-0"



FOREMAN CONSULTING, INC.
 LANDSCAPE ARCHITECTURE
 DEVELOPMENT CONSULTING
 LAND PLANNING
 2146 LAGAY PLACE, LONGWOOD, FL 32779
 Phone: (407) 884-0818
 Fax: (407) 884-0819

DESCRIPTION	DATE	BY	CHK	BY

HARMONY NEIGHBORHOOD "I"
 HARMONY, FLORIDA
 LANDSCAPE PLAN

DATE: 10/05/15
 SCALE: 1" = 20'
 DRAWN BY: RYM
 DESIGNED BY: KJF
 CHECKED BY: KJF

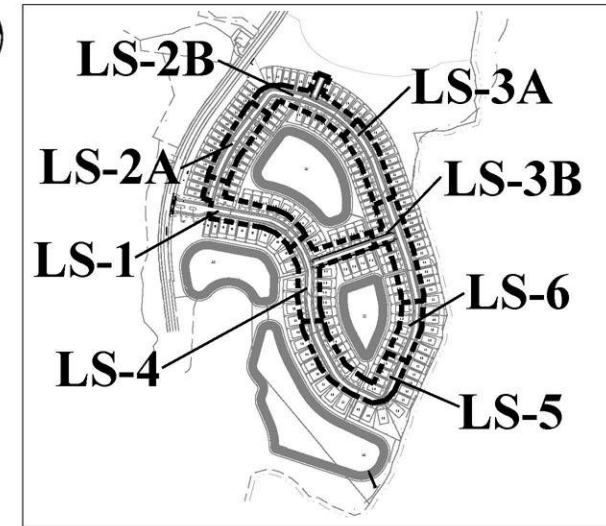
SHEET NO.
LS-9

SCHEDULE OF DRAWINGS

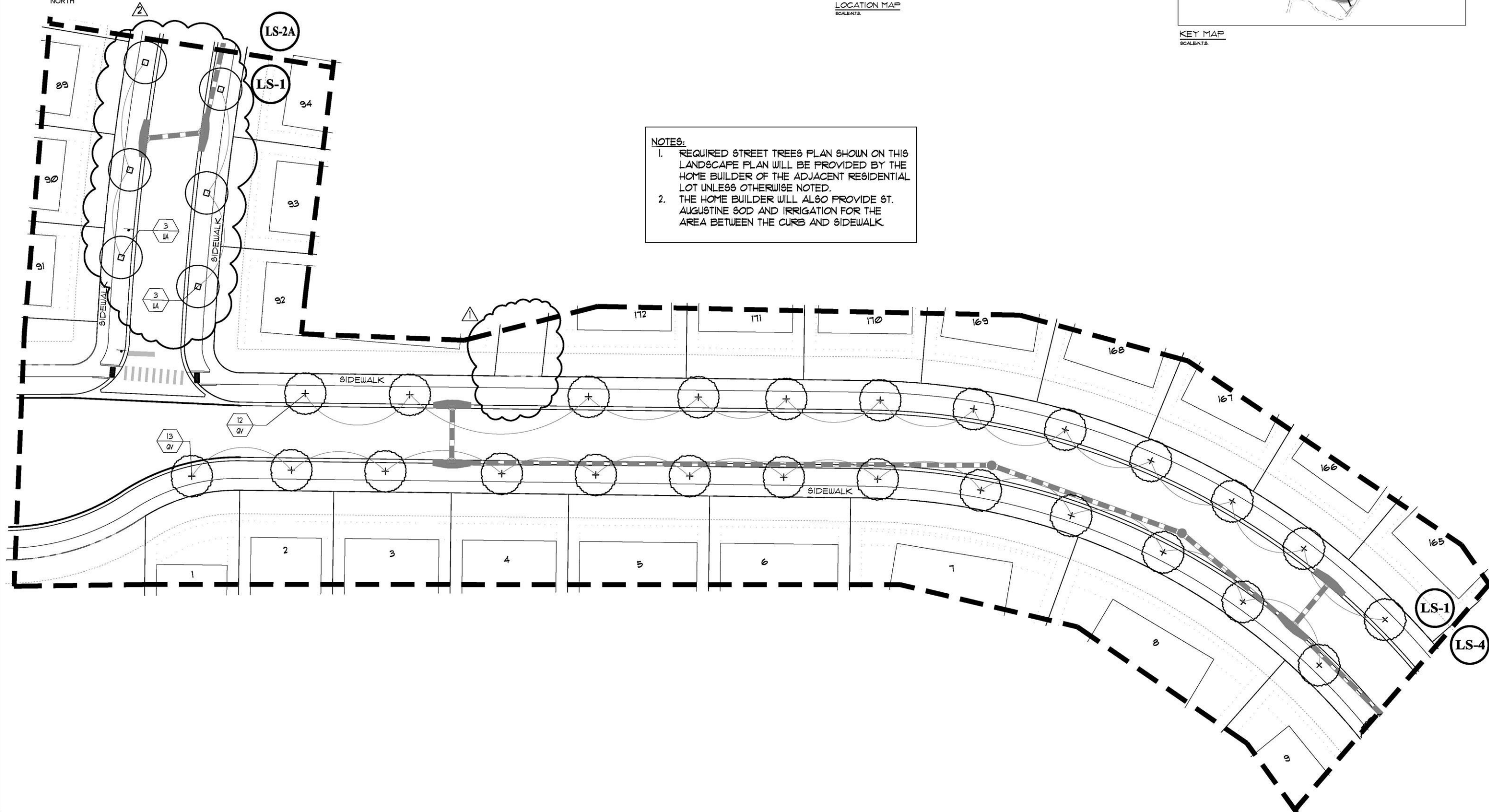
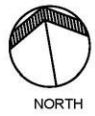
△ △	LS-1	LANDSCAPE PLAN
△ △	LS-2	LANDSCAPE PLAN
△ △	LS-3	LANDSCAPE PLAN
△ △	LS-4	LANDSCAPE PLAN
△ △	LS-5	LANDSCAPE PLAN
△ △	LS-6	LANDSCAPE PLAN
△ △	LD-1	LANDSCAPE DETAILS & PLANT LIST



LOCATION MAP
SCALE: 1" = 100'



KEY MAP
SCALE: 1" = 100'



NOTES:

1. REQUIRED STREET TREES PLAN SHOWN ON THIS LANDSCAPE PLAN WILL BE PROVIDED BY THE HOME BUILDER OF THE ADJACENT RESIDENTIAL LOT UNLESS OTHERWISE NOTED.
2. THE HOME BUILDER WILL ALSO PROVIDE ST. AUGUSTINE SOD AND IRRIGATION FOR THE AREA BETWEEN THE CURB AND SIDEWALK.

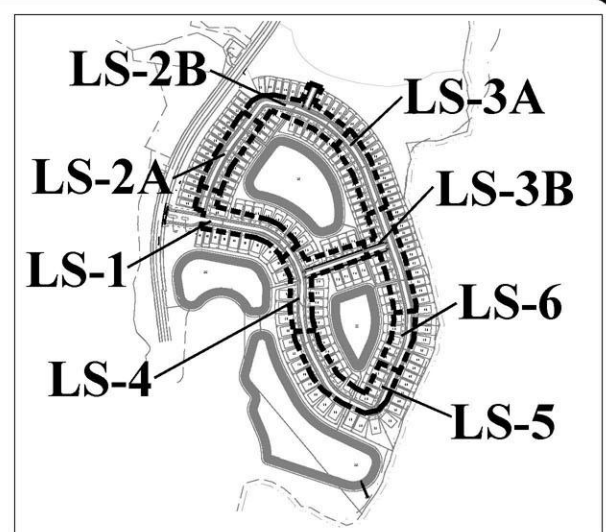
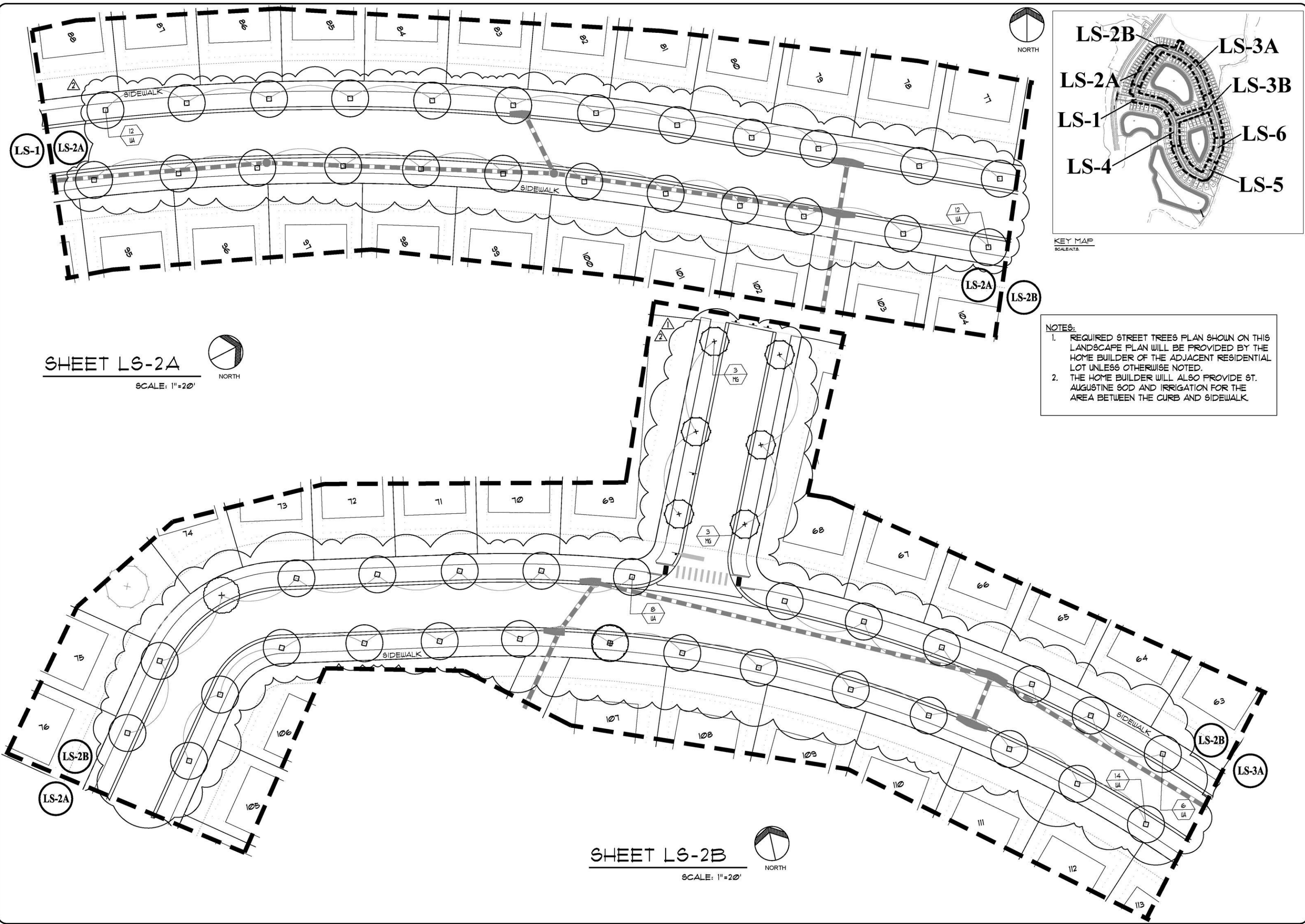
FOREMAN CONSULTING, INC.
 LANDSCAPE ARCHITECTURE
 DEVELOPMENT CONSULTING
 LAND PLANNING
 2146 LACY PLACE LONGWOOD, FL 32779
 (407) 884-0978

DATE	DESCRIPTION	BY	CHK	DATE
05-18-15	ADDED ADDITIONAL STREET TREES FOR NEW ROAD AND LOT LAYOUT CHANGE	RYM	KJF	
07-14-15	ADDED TREE SPECIES PER COUNTY COMMENTS	RYM	KJF	

HARMONY NEIGHBORHOOD "I" STREET TREES PLAN
 HARMONY, FLORIDA
 LANDSCAPE PLAN

DATE: 05/18/15
 SCALE: 1" = 20'
 DRAWN BY: RYM
 DESIGNED BY: KJF
 CHECKED BY: KJF

SHEET NO.
LS-1



KEY MAP
SCALE: 1"=20'

NOTES:

1. REQUIRED STREET TREES PLAN SHOWN ON THIS LANDSCAPE PLAN WILL BE PROVIDED BY THE HOME BUILDER OF THE ADJACENT RESIDENTIAL LOT UNLESS OTHERWISE NOTED.
2. THE HOME BUILDER WILL ALSO PROVIDE ST. AUGUSTINE SOD AND IRRIGATION FOR THE AREA BETWEEN THE CURB AND SIDEWALK.

SHEET LS-2A
SCALE: 1"=20'

SHEET LS-2B
SCALE: 1"=20'

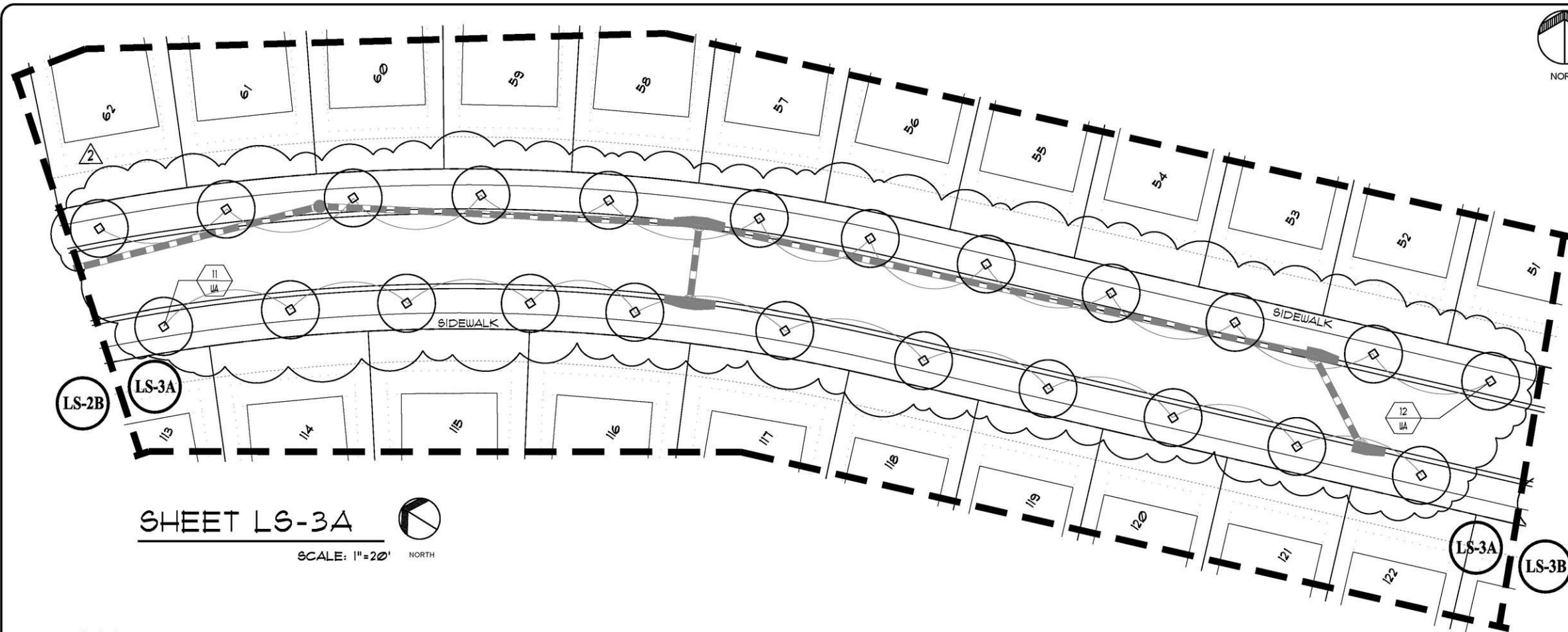
FOREMAN CONSULTING, INC.
 LANDSCAPE ARCHITECTURE
 DEVELOPMENT CONSULTING
 LAND PLANNING
 246 LACY PLACE LONGWOOD, FL 32779
 (407) 884-0878

DESCRIPTION	RTY	KJF	DATE
ADDED ADDITIONAL STREET TREES FOR NEW ROAD AND LOT LAYOUT CHANGE			
STREET TREE QUANTITIES PER COUNTY ORDINANCE			

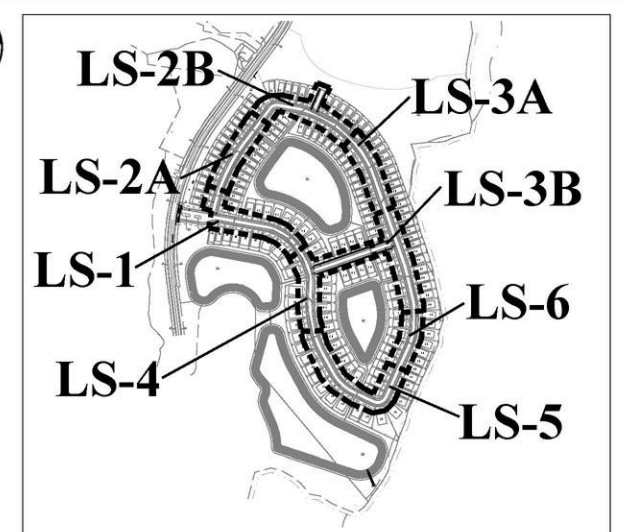
DATE: 05/18/15
 SCALE: 1"=20'
 DRAWN BY: RYM
 DESIGNED BY: KJF
 CHECKED BY: KJF

HARMONY NEIGHBORHOOD "I"
 STREET TREES PLAN
 HARMONY, FLORIDA
 LANDSCAPE PLAN

SHEET NO.
 LS-2

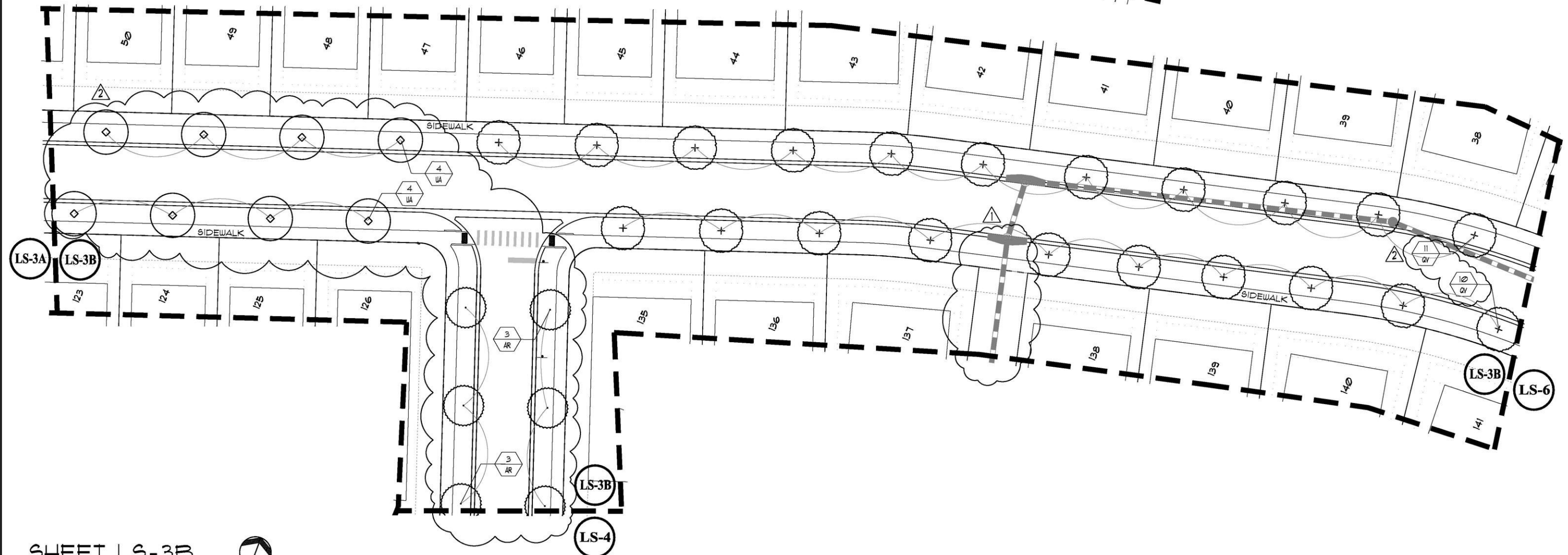


SHEET LS-3A
SCALE: 1"=20' NORTH



NOTES:

1. REQUIRED STREET TREES SHOWN ON THIS LANDSCAPE PLAN WILL BE PROVIDED BY THE HOME BUILDER OF THE ADJACENT RESIDENTIAL LOT UNLESS OTHERWISE NOTED.
2. THE HOME BUILDER WILL ALSO PROVIDE ST. AUGUSTINE SOD AND IRRIGATION FOR THE AREA BETWEEN THE CURB AND SIDEWALK.



SHEET LS-3B
SCALE: 1"=20' NORTH

FOREMAN CONSULTING, INC.
LANDSCAPE ARCHITECTURE
DEVELOPMENT CONSULTING
LAND PLANNING

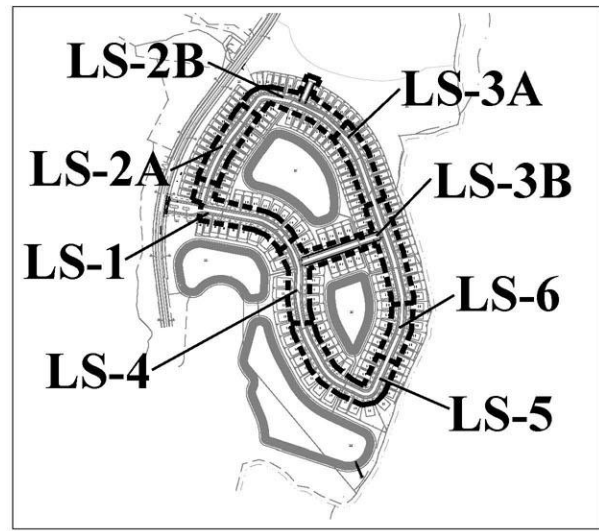
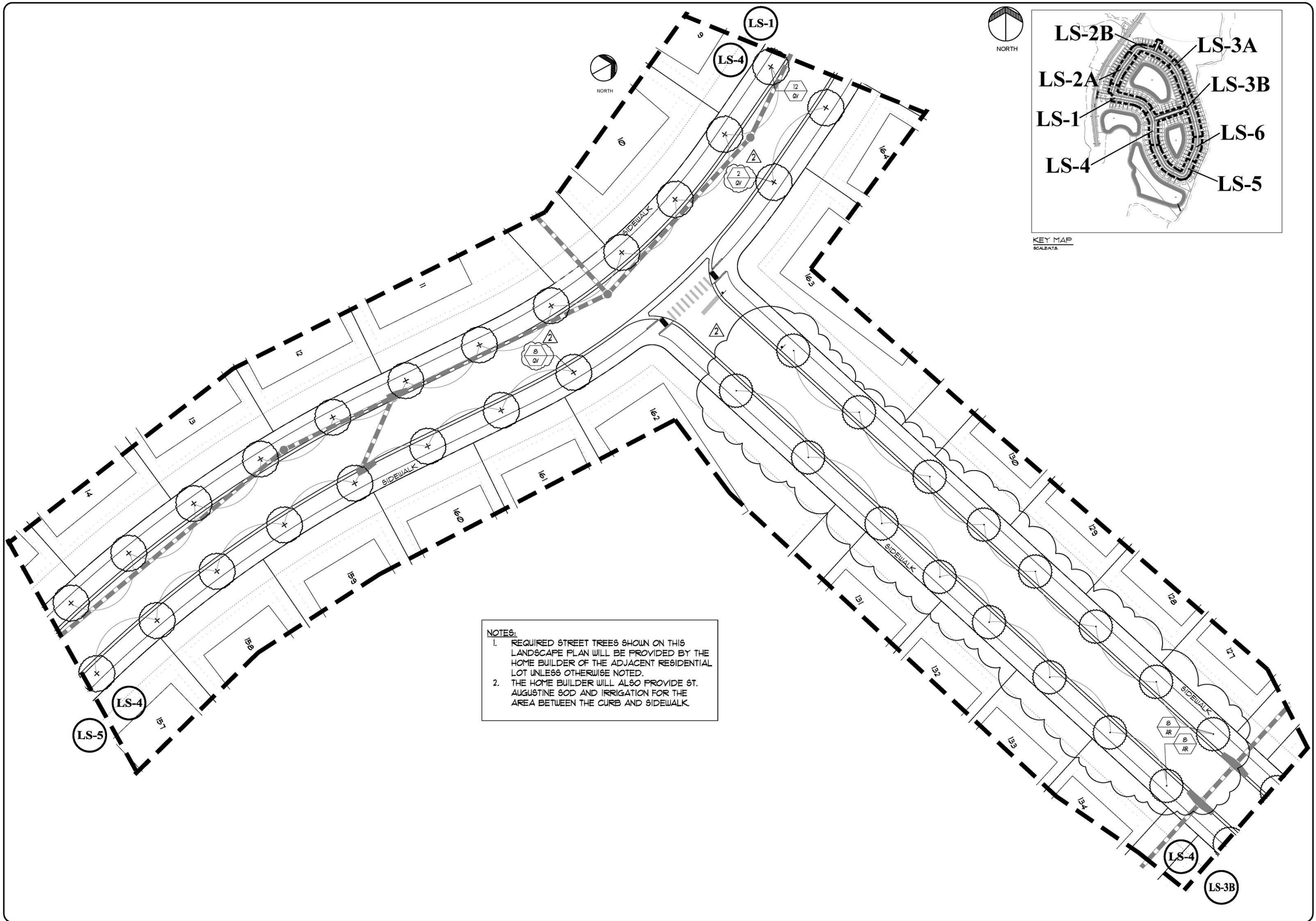
246 LAGAY PLACE, LONGWOOD, FL 32779
Phone: 407-884-0818
Fax: 407-884-0819

DESCRIPTION	DATE	BY	CHK
ADDED ADDITIONAL STREET TREES FOR NEW ROAD AND LOT LAYOUT CHANGE	05/18/15	KJF	KJF
STREET TREE SPECIES PER COUNTY CODES			

HARMONY NEIGHBORHOOD "I" STREET TREES PLAN
HARMONY, FLORIDA
LANDSCAPE PLAN

DATE: 05/18/15
SCALE: 1"=20'
DRAWN BY: RYM
DESIGNED BY: KJF
CHECKED BY: KJF

SHEET NO.
LS-3



KEY MAP
SCALES:

- NOTES:**
1. REQUIRED STREET TREES SHOWN ON THIS LANDSCAPE PLAN WILL BE PROVIDED BY THE HOME BUILDER OF THE ADJACENT RESIDENTIAL LOT UNLESS OTHERWISE NOTED.
 2. THE HOME BUILDER WILL ALSO PROVIDE ST. AUGUSTINE GSD AND IRRIGATION FOR THE AREA BETWEEN THE CURB AND SIDEWALK.

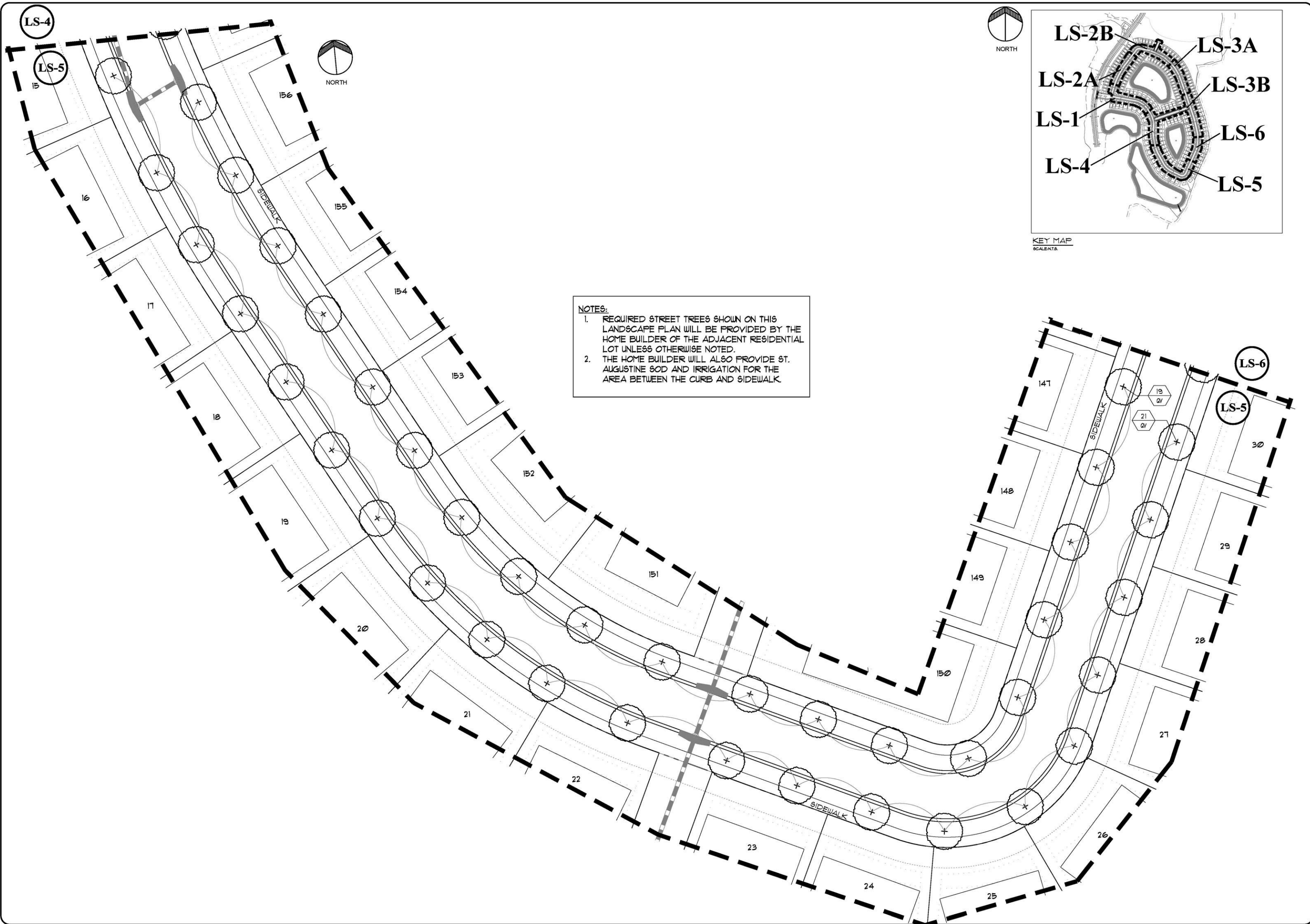
FOREMAN
CONSULTING, INC.
LANDSCAPE ARCHITECTURE
DEVELOPMENT CONSULTING
LAND PLANNING
2146 LAGAY PLACE LONGWOOD, FL 32779
1-800-521-1111

NO.	DATE	DESCRIPTION	BY	CHK	APP
1		ADDED ADDITIONAL TREE SPECIES PER COUNTY COMMENTS			

HARMONY NEIGHBORHOOD "I"
STREET TREES PLAN
HARMONY, FLORIDA
LANDSCAPE PLAN

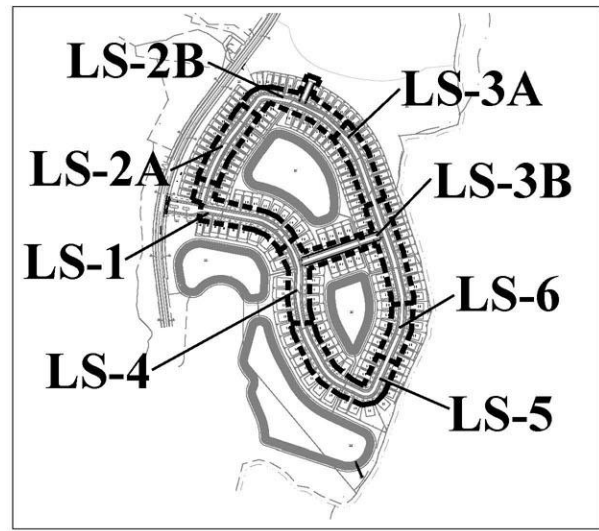
DATE: 05/18/15
SCALE: 1"=20'
DRAWN BY: RYM
DESIGNED BY: KJF
CHECKED BY: KJF

SHEET NO.
LS-4



NOTES:

1. REQUIRED STREET TREES SHOWN ON THIS LANDSCAPE PLAN WILL BE PROVIDED BY THE HOME BUILDER OF THE ADJACENT RESIDENTIAL LOT UNLESS OTHERWISE NOTED.
2. THE HOME BUILDER WILL ALSO PROVIDE ST. AUGUSTINE SOD AND IRRIGATION FOR THE AREA BETWEEN THE CURB AND SIDEWALK.



FOREMAN CONSULTING, INC.

LANDSCAPE ARCHITECTURE
 DEVELOPMENT CONSULTING
 LAND PLANNING

254 LAGAY PLACE LONGWOOD, FL 32779
 (407) 884-0919

LANDSCAPE ARCHITECT:
 KENT FOREMAN, P.L.A.

DESCRIPTION	DATE	BY		
			CHK	BY

HARMONY NEIGHBORHOOD "I"
 STREET TREES PLAN
 HARMONY, FLORIDA
 LANDSCAPE PLAN

DATE: 05/18/15
 SCALE: 1"=20'
 DRAWN BY: RYM
 DESIGNED BY: KJF
 CHECKED BY: KJF

SHEET NO.
 LS-5

