

Central Florida Yamaha & Honda Marine Inc.

730 HWY 27 North
Lake Placid, FL 33852
Phone (863) 465-6669 Fax (863) 465-7233



DATE: January 11, 2016
INVOICE # 1112016

Bill To: Harmony CDD Field Services

Ship To:

7360 Five Oaks DR
Harmony, FL 34773
407-301-2235

Comments or Special Instructions:

SALESPERSON	P.O. NUMBER	SHIP DATE	SHIP VIA	TRACKING #	TERMS
Adam					Due on receipt

QUANTITY	DESCRIPTION	UNIT PRICE	AMOUNT
1	2016 SweetWater Sunrise 18 Std Spec includes: Minnkota EDrive Electric motor with (4) Group 27 batteries Minnkota 4 bank digital charger	\$ 14,687.00	\$ 14,687.00
1	Optional Magic Tilt Galvanized pontoon trailer	1,799.00	1,799.00
1	Optional Door Delivery	300.00	300.00
SUBTOTAL			\$ 16,786.00
Prep Fee			incl.
Factory Freight			1,300.00
TOTAL			\$ 18,086.00

Make all checks payable to Central Florida Yamaha
If you have any questions concerning this invoice, contact Adam

THANK YOU FOR YOUR BUSINESS!



Sweetwater

SweetwaterBoats.com

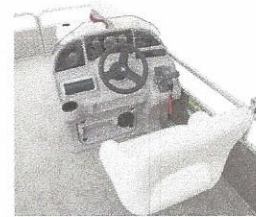
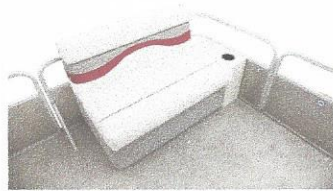
SCAN
Model Specific
QR Code



The Sweet Life

Sunrise SW 186 C

Length (L.O.A.)	18' 0"
Length (Pontoon)	17' 0"
Beam	102
Maximum HP	60
Approx. Wet Weight	1822
Approx. Dry Weight	1386
Fuel Capacity	11
Person Capacity	9



Standards

Sweetwater Sunrise SW 186 C

Canvas

Canopy; with protective boot

Construction

Tubes; 23"

Decking - Full

Carpet: Boca

Entertainment

Stereo; Sony CDXM-20 Player with MP3 input and 2 speakers

Exterior

Cleats; Nylon 4 fixed

Ladder; stern

Helm

Captain's chair; swivel; slider; bucket style
Trim Gauge with engine package

Helm Station; Windscreen, switch panel, Tachometer and
horn

Interior

Table; stern with built-in cup holders

Styling

Base Vinyl Color - French Vanilla
Rail Frame Anodized - Silver

Rail Skin Color - Taupe

Options

Sweetwater Sunrise SW 186 C

Canvas

Playpen cover

Seat covers; neutral color vinyl

Construction

Canadian Certification

Engine, install (add \$300 for Verado)

Drilled Transom

International Shipping Cradle

Decking - Full

Vinyl Deck (Beige) covering, full, in lieu of carpet

Decking - Midship

Vinyl Deck (Beige) covering; Midship

Fishing

Depth / Fish finder; Elite 3X Color

Livewell; aerated

Helm

Trim Gauge (Honda/Suzuki)

Trim Gauge (Yamaha/Mercury/Bombardier)

Interior

Cup holders; removable

Cup holders; removable, 2 Additional

Cup holders; removable, 4 Additional

Fire extinguisher

Cup holders; removable, 1 Additional

Cup holders; removable, 3 Additional

Extra Table Base (not installed)

Table; Extra with base (not installed)

Packages

Convenience Package: Docking Lights, 2 extra speakers, 12 V outlet, 1 removeable cupholder

Styling

Canvas Color - Black

Canvas Color - Vino Red

Vinyl Accent Color - Navy

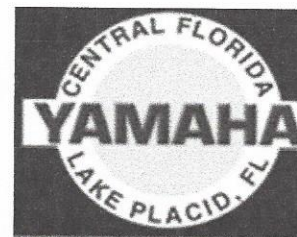
Canvas Color - Navy

Vinyl Accent Color - Black

Vinyl Accent Color - Vino Red

Central Florida Yamaha & Honda Marine Inc.

730 HWY 27 North
Lake Placid, FL 33852
Phone (863) 465-6669 Fax (863) 465-7233



DATE: January 7, 2016
INVOICE # 100

Bill To: Harmony CDD Field Services

Ship To:

7360 Five Oaks Drive
Harmony, FL 34773
407-301-2235

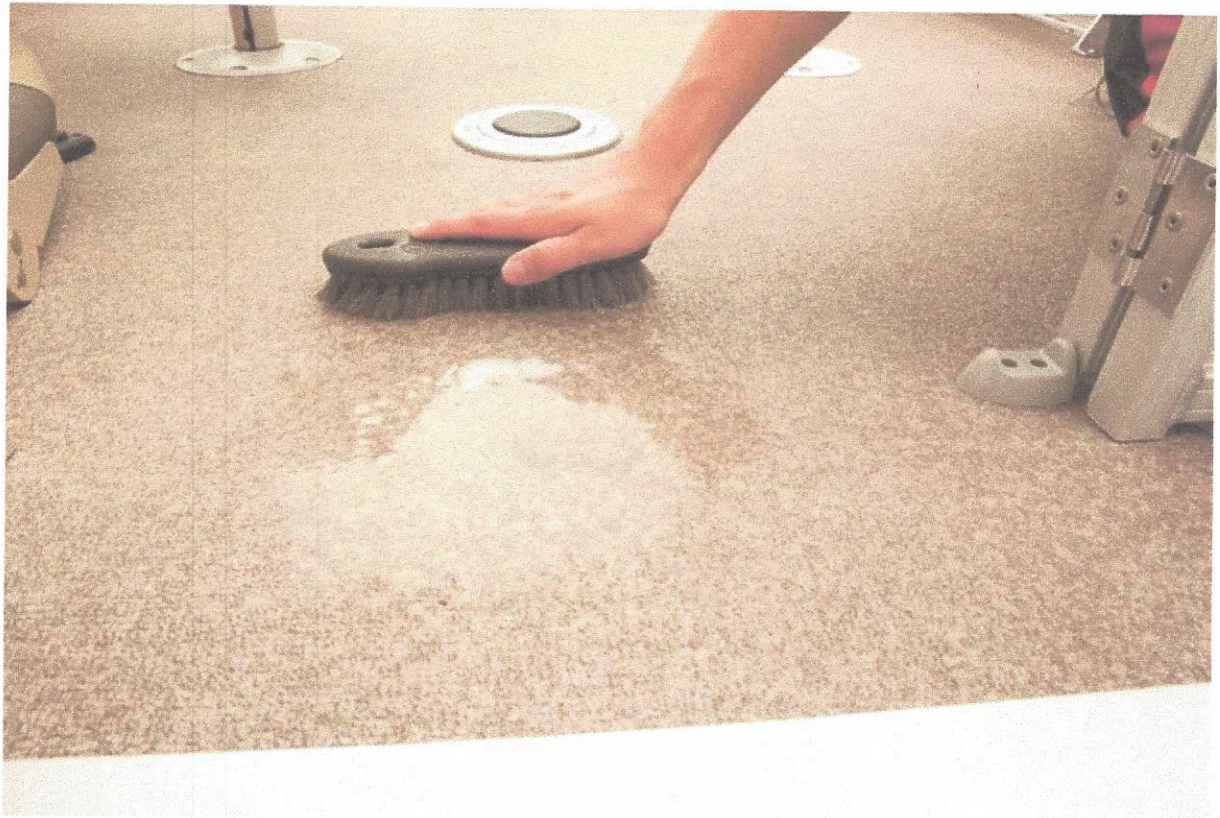
Comments or Special Instructions:

SALESPERSON	P.O. NUMBER	SHIP DATE	SHIP VIA	TRACKING #	TERMS
Adam					Due on receipt

QUANTITY	DESCRIPTION	UNIT PRICE	AMOUNT
1	Sunrise 16DLX Electric	\$ 13,595.00	\$ 13,595.00
1	Optional Suntracker trailer	1,860.00	1,860.00
1	Optional Delivery fee to Harmony, FL	300.00	300.00
SUBTOTAL			\$ 15,755.00
Prep Fee			\$295.00
Factory Freight			\$1,050.00
TOTAL			\$ 17,100.00

Make all checks payable to Central Florida Yamaha
If you have any questions concerning this invoice, contact Adam

THANK YOU FOR YOUR BUSINESS!





2016 BASS BUGGY® 16 DLX ET



Length	16'
Deck length	13'
Deck width	85"
Max. recommended HP	6 HP
Fuel capacity (portable)	0.000 Gallons
Pontoon log length	15' 8"
Pontoon log diameter	24"
Pontoon log material	0.080 5052 Marine Alloy
Max. Person Capacity (U.S.)	7 Persons

Max. Person Capacity (Canada)	7 Persons
Max. person weight	1150 Lbs.
Max. weight capacity	1400 Lbs.
Depth inside	24"
Approx. weight	1235 Lbs.
Approx. package weight	1925 Lbs.
Package height	8' 8"
Package width	7' 1"
Towing length	23'
Storage length	21'

Industry-leading 10+Life™ Warranty

NEW fencing design w/built-in Rail-Lock™ system for optional mooring cover

Torqeedo® Cruise 2.0 R electric motor (6HP equivalent)

24" (60.96 cm) diameter multichambered pontoon logs

9-gal. (34.07 L) forward-console aerated livewell w/padded cushion

Port pull-out boarding ladder

Easy-to-clean flooring throughout
Console w/drink & rod holders
L-lounge w/underseat storage
Color-keyed 6' (1.83 m) Bimini top

Standard Features

Comfort, Convenience & Peace of Mind

10+Life™ Warranty: 10-year bow-to-stern warranty + limited lifetime structural & deck warranty + transferable to a second owner
NMMA Certified
Color-keyed 6' (1.83 m) polyester Bimini top w/protective boot, easy-adjusting straps
NEW adjustable nylon pull-tight Bimini straps for best appearance & reduced vibration
Dual-latching gates w/finger guards & brightly finished heavy-duty hinges that open inward
Gate stops/holders to keep gates secure in open position
Navigation lights w/LED bow lights
4 mooring cleats
Motor-stop safety lanyard
Fire extinguisher
Horn

Console(s)

Torqeedo battery-life gauge w/battery charge status, speed, power consumption & remaining range based on integrated GPS info built in to the Battery Management System (BMS)
Sport steering wheel
4:2 ratio steering for responsive, easy turning
Wraparound sport console shroud & tinted windscreen
Vertical rod holders
Below-console storage space w/curtain
Small items tray & drink holders
Forward-console seat w/molded-in grab handles & below-cushion livewell w/shutoff valve
Side-mounted controls w/trim
Rocker switches

Construction & Exterior

24" (61 cm) diameter high-buoyancy multichambered pontoons w/wave deflectors & internal bracing for additional strength
NEW Rail-Lock™ system for mounting optional snapless, trailerable mooring cover
High-sheen fence finish for long-lasting good looks
Extruded anodized aluminum deck edging w/polished corner covers
Stainless or coated corrosion-resistant fasteners
7-ply pressure-treated 3/4" (1.91 cm) deck w/Limited Lifetime Warranty
Full-width heavy-duty extruded Z-bar deck supports that are thru-bolted to M-brackets
Elevated fence panels for deck drainage & ventilation
Sound- & vibration-deadening fence insulation for a quiet ride
Box-beam all-aluminum transom for strength & longevity

Black or Red fence color

Electrical

Protective abrasion-resistant wire wrap

Water-resistant connectors

Interior courtesy lighting

Interior

Bow fishing positions w/2 removable folding fishing chairs

Fishing chairs constructed w/all-composite seat frames w/heavy-duty 2-3/8" (6 cm) diameter pedestals

Aft L-lounge w/underseat storage compartments

Fishing friendly, easy-clean flooring throughout

In-deck pedestal base for optional table

Port wheelchair-access gate

Port side-mounted pull-out boarding ladder

Livewell System(s)

9-gal. (34.1 L) forward-console aerated livewell w/padded cushion

Performance

Environmentally friendly Torqeedo electric motor for power-restricted lakes & waterways

Torqeedo lithium batteries w/redundant Battery Management System (BMS) featuring battery charge status, speed, power consumption & remaining range based on integrated GPS info

Performance enhancing extended motor pod

Options

Covers

Genuine SUN TRACKER mooring cover—Black	\$ 545
Genuine SUN TRACKER mooring cover—Red	\$ 545

Packages

Fish package w/Lowrance® Elite-3x fishfinder & MotorGuide® W55 wireless 12V, 55-lb. thrust foot-control trolling motor (trolling battery & dealer installation not included)	\$ 995
--	--------

Trailer

Single-axle trailer (\$250 freight charge applies for standalone trailer purchase)	\$ 1,995
Single-axle trailer w/brakes (\$250 freight charge applies for standalone trailer purchase)	\$ 2,295

Available Motors

Torqeedo Electric

Torqeedo Cruise 2.0 R electric [6HP equivalent] w/"smart" lithium battery system
--