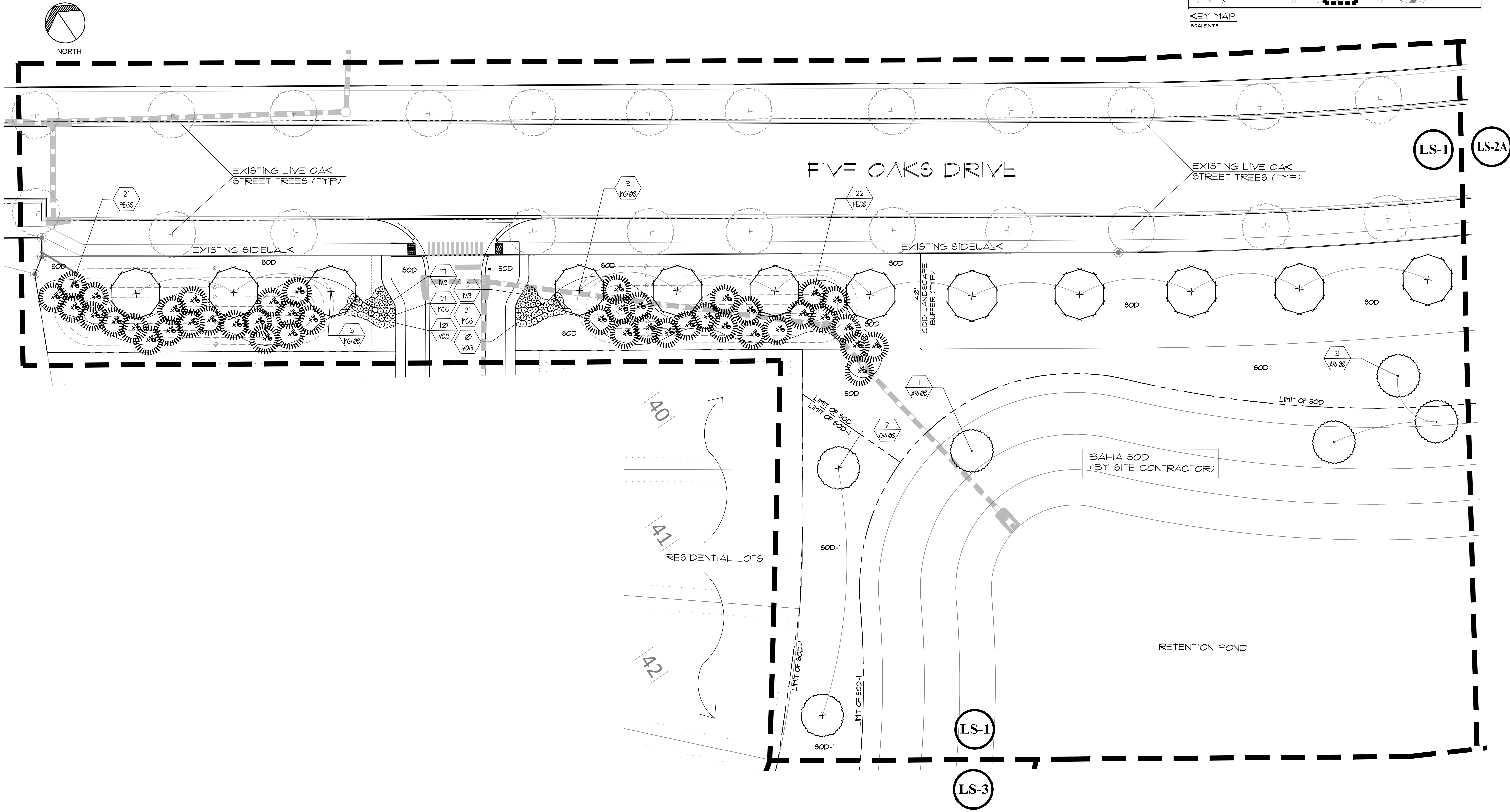
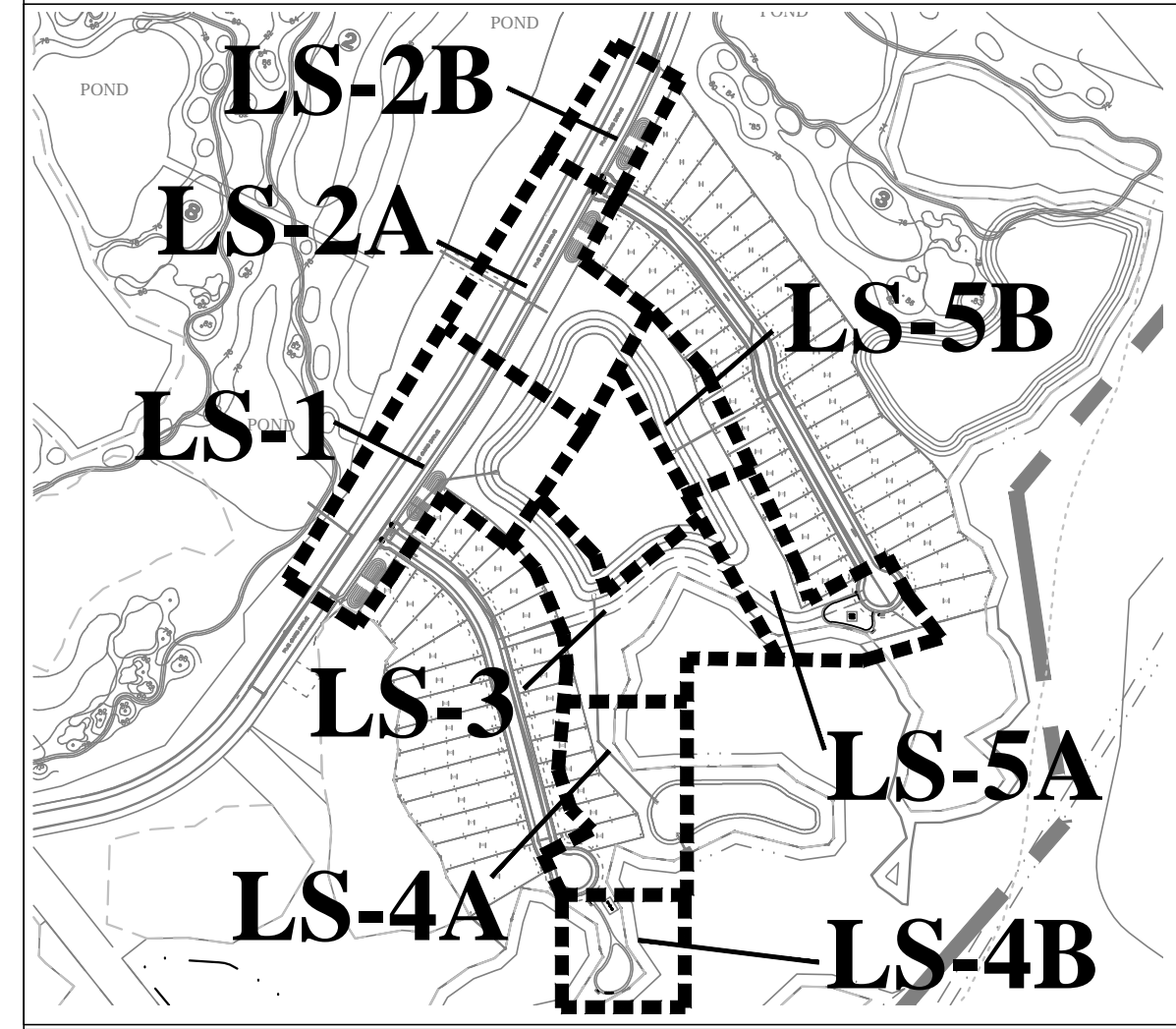


SCHEDULE OF DRAWINGS	
LS-1	LANDSCAPE PLAN
LS-2	LANDSCAPE PLAN
LS-3	LANDSCAPE PLAN
LS-4	LANDSCAPE PLAN
LS-5	LANDSCAPE PLAN
LD-1	LANDSCAPE DETAILS & PLANT LIST



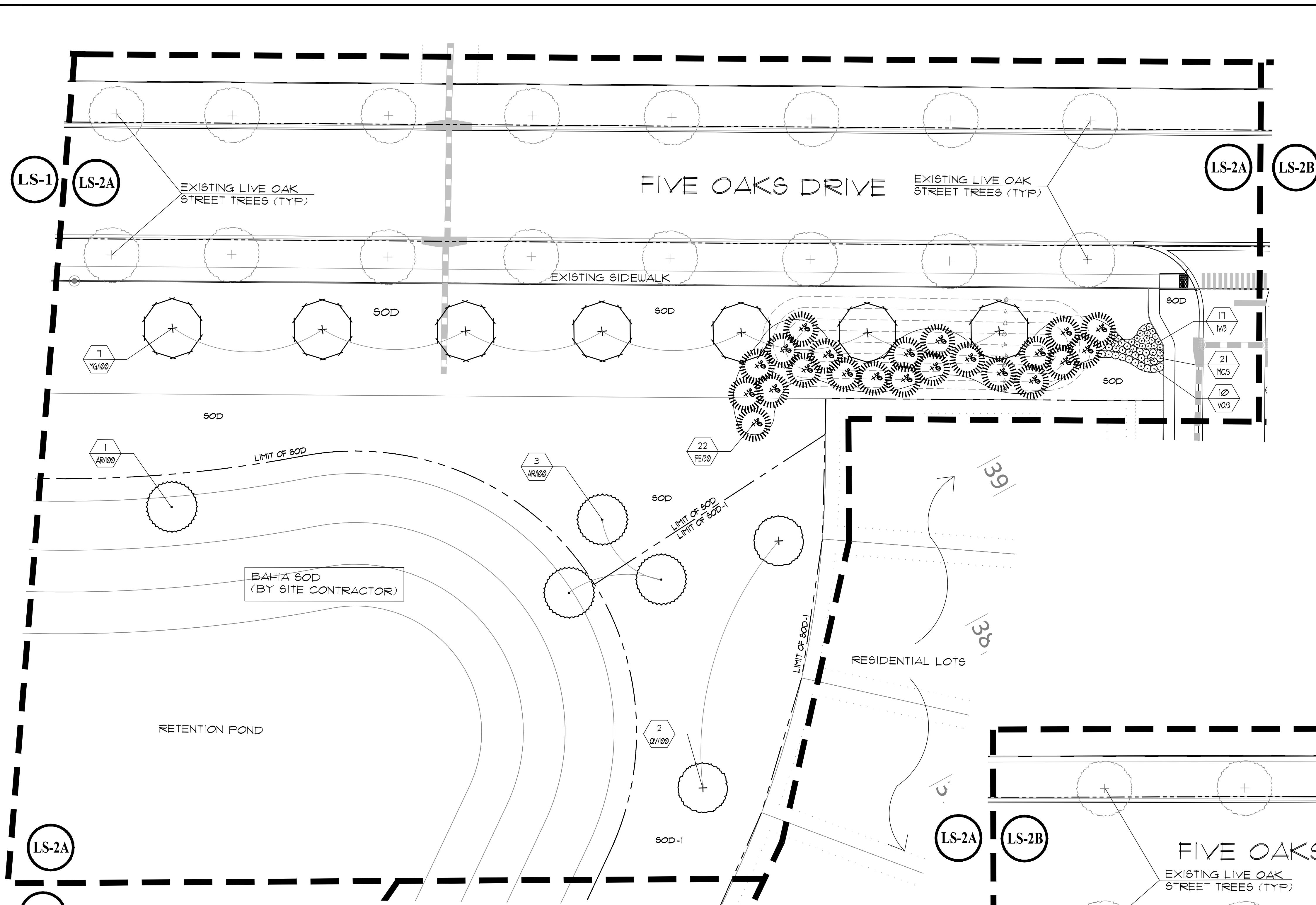
**FOREMAN CONSULTING, INC.**  
 LANDSCAPE ARCHITECTURE  
 DEVELOPMENT CONSULTING  
 LAND PLANNING  
 246 LAGAY PLACE LONGWOOD, FL 32779  
 407-884-0818

DESCRIPTION	DATE	BY	CHK
REVISIONS			
1. PRE-CONSTRUCTION SOD REVISIONS			
2. REVISIONS PER PERMITS ADDITION			

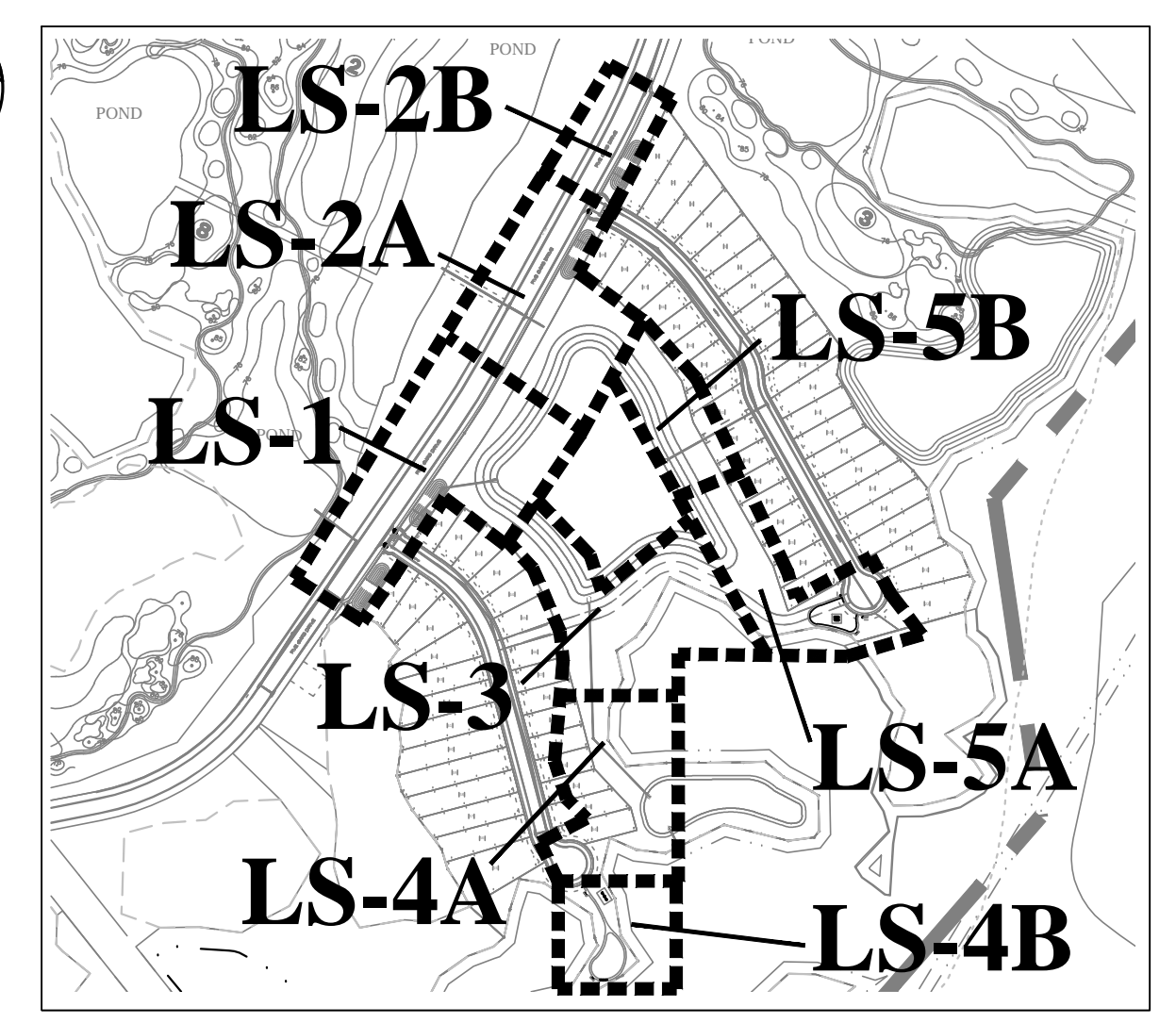
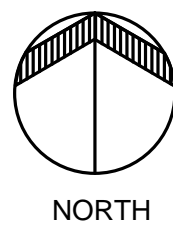
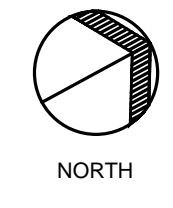
**HARMONY NEIGHBORHOOD "O"**  
 HARMONY, FLORIDA  
**LANDSCAPE PLAN**

DATE: 01/16/15  
 SCALE: 1"=20'  
 DRAWN BY: RYM  
 DESIGNED BY: KJF  
 CHECKED BY: KJF

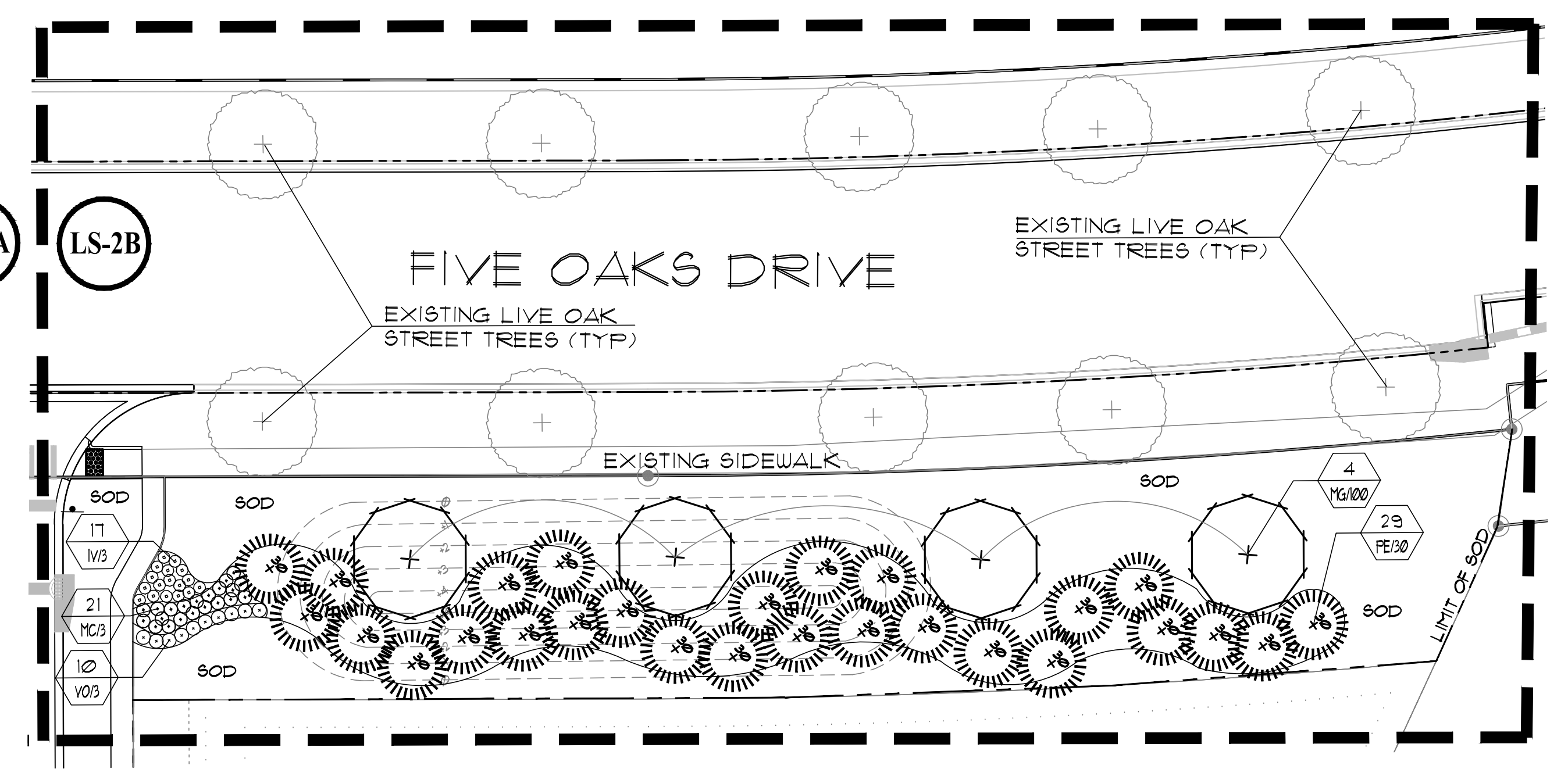
SHEET NO.  
**LS-1**



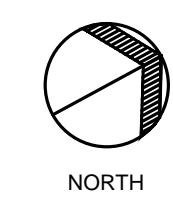
**SHEET LS-2A**  
SCALE: 1"=20'



KEY MAP  
SCALE: 1"=20'



**SHEET LS-2B**  
SCALE: 1"=20'



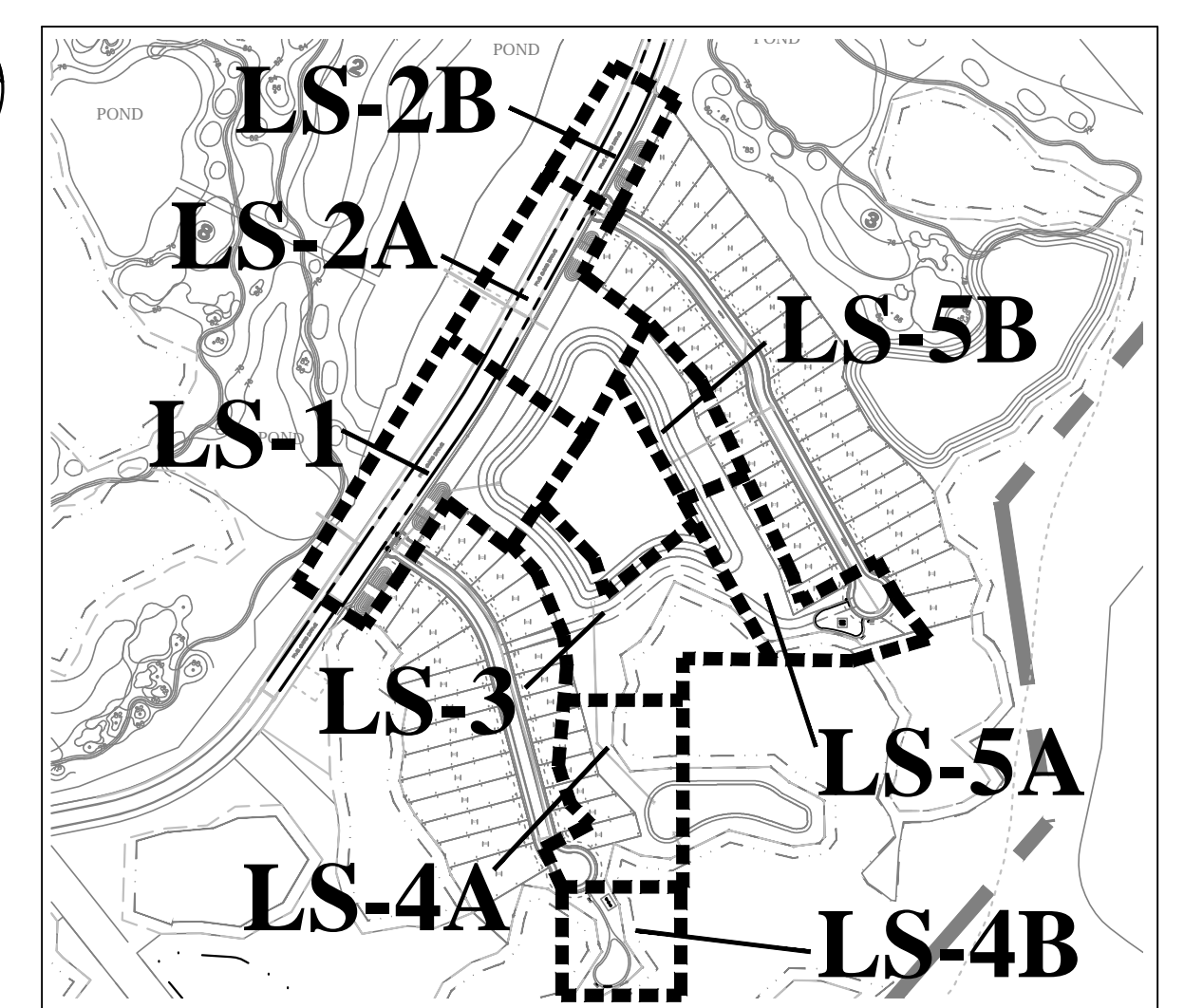
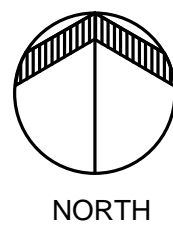
**FOREMAN CONSULTING, INC.**  
LANDSCAPE ARCHITECTURE  
DEVELOPMENT CONSULTING  
LAND PLANNING  
246 LAGAY PLACE LONGWOOD, FL 32719  
www.foremaninc.com (407) 886-0118

NO.	DATE	DESCRIPTION	BY	CHK
1	01/16/15	PRELIMINARY	KJF	
2				
3				
4				
5				
6				
7				
8				
9				
10				
11				
12				
13				
14				
15				
16				
17				
18				
19				
20				
21				
22				
23				
24				
25				
26				
27				
28				
29				
30				
31				
32				
33				
34				
35				
36				
37				
38				
39				
40				
41				
42				
43				
44				
45				
46				
47				
48				
49				
50				

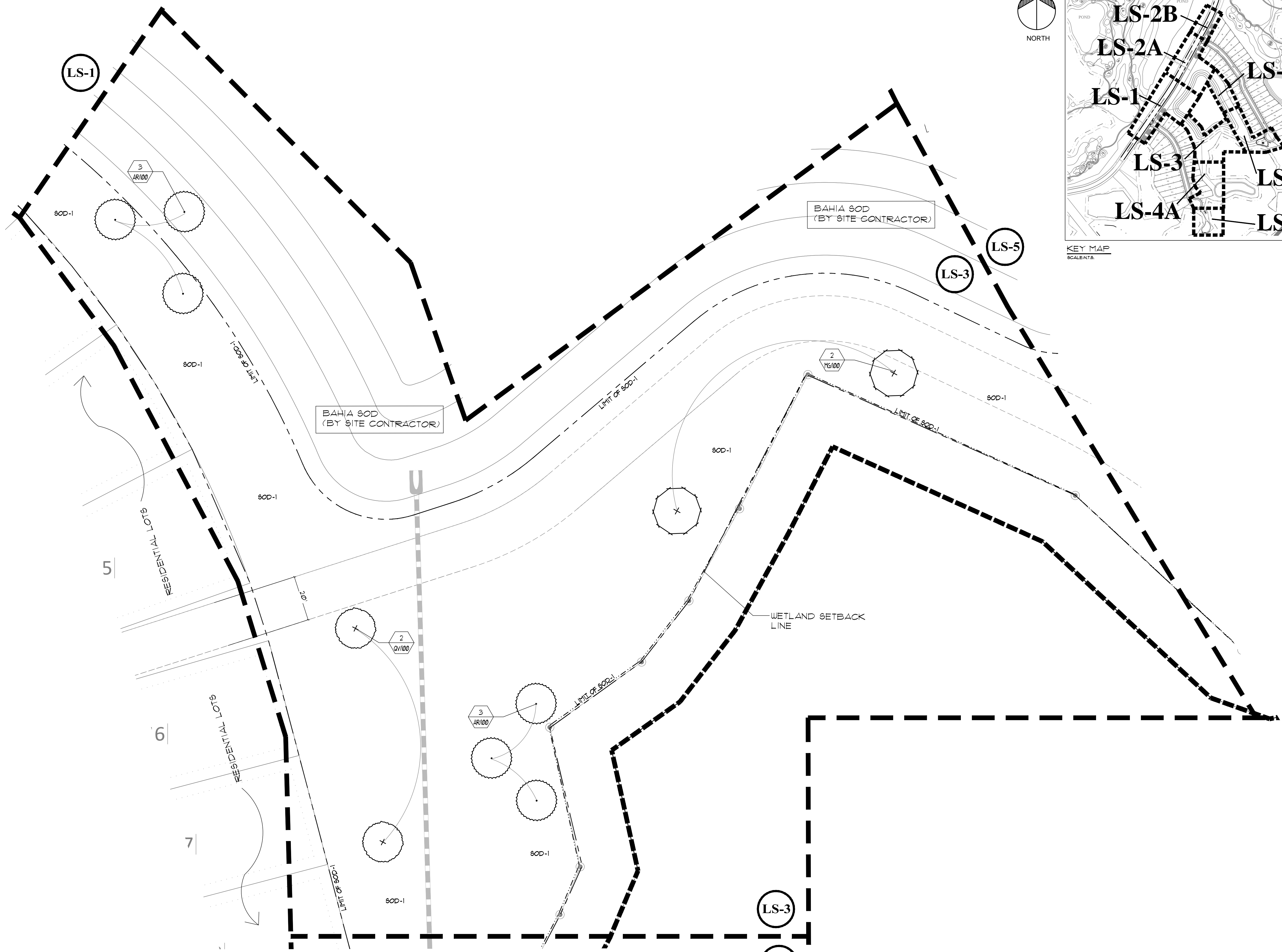
**HARMONY NEIGHBORHOOD "O"**  
HARMONY, FLORIDA  
LANDSCAPE PLAN

DATE: 01/16/15  
SCALE: 1"=20'  
DRAWN BY: RYM  
DESIGNED BY: KJF  
CHECKED BY: KJF

SHEET NO.  
**LS-2**



KEY MAP  
SCALE: 1/8" = 1'-0"



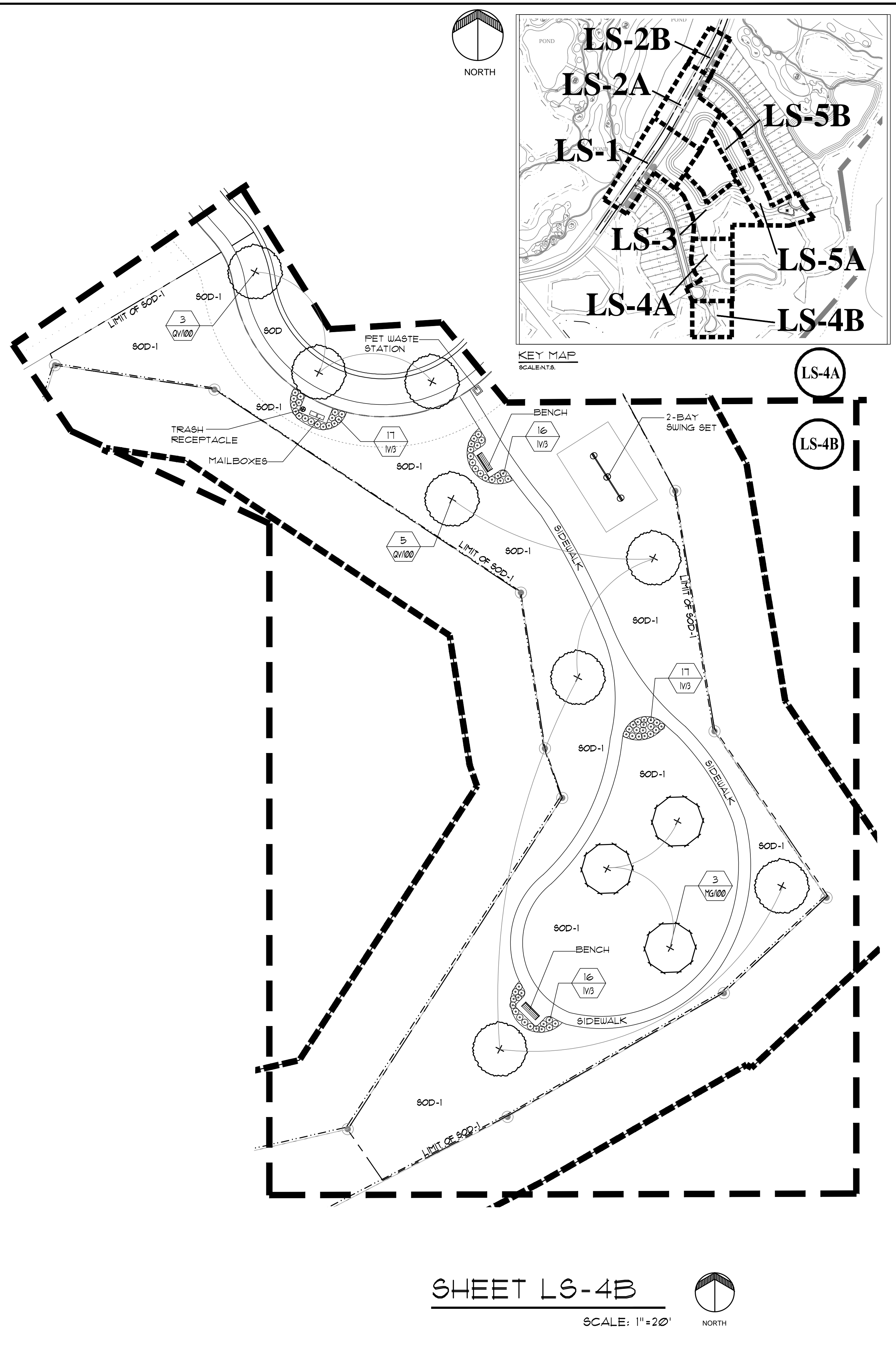
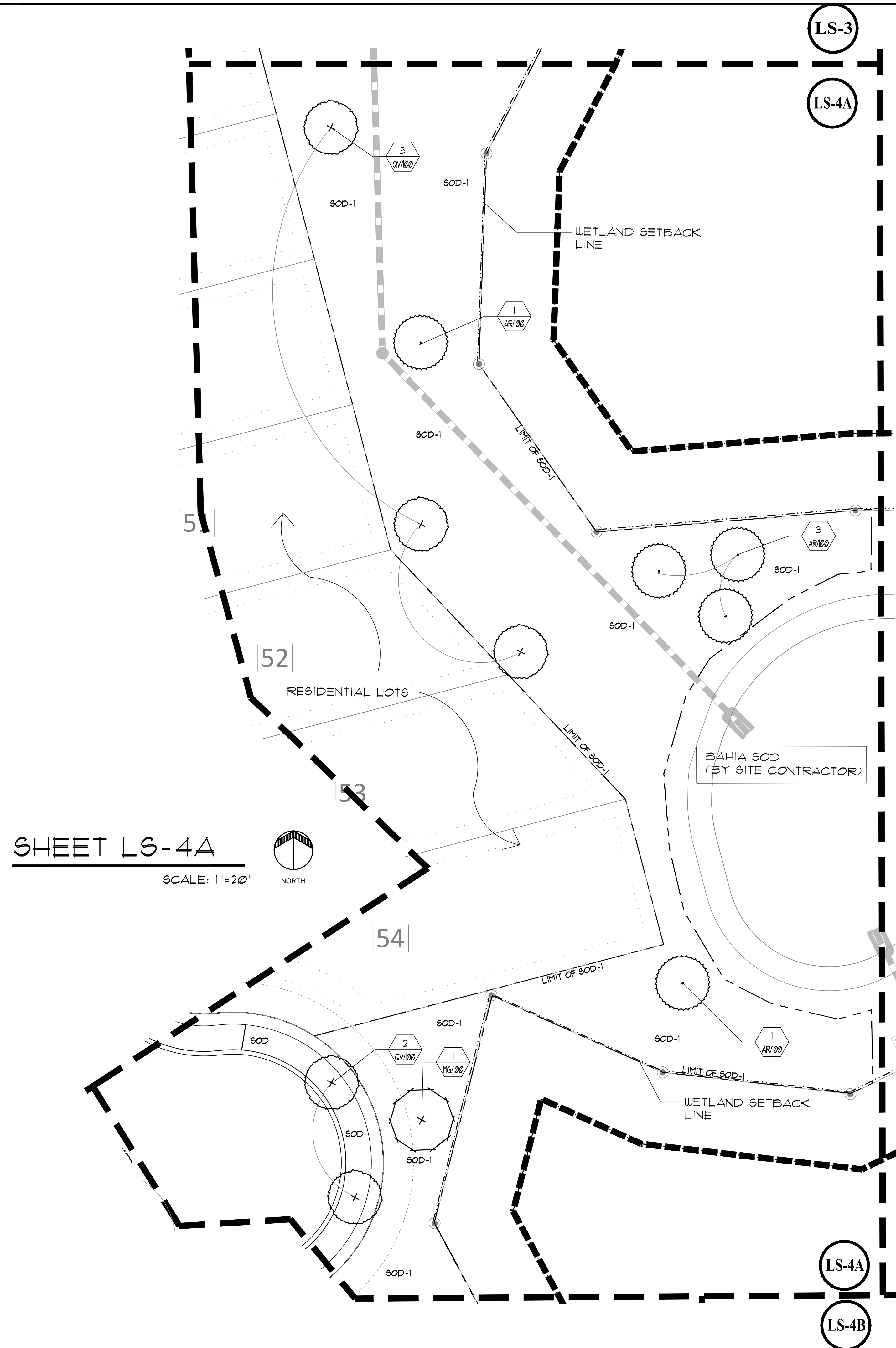
**FOREMAN CONSULTING, INC.**  
 LANDSCAPE ARCHITECTURE  
 DEVELOPMENT CONSULTING  
 LAND PLANNING  
 246 LAGAY PLACE LONGWOOD, FL 32719  
 (407) 884-0818

NO.	DATE	BY	CHK	DESCRIPTION
1	01/16/15	KJF		PRELIMINARY LAYOUT
2				
3				
4				
5				
6				
7				
8				
9				
10				

**HARMONY NEIGHBORHOOD "O"**  
 HARMONY, FLORIDA  
 LANDSCAPE PLAN

DATE: 01/16/15  
 SCALE: 1" = 20'  
 DRAWN BY: RYM  
 DESIGNED BY: KJF  
 CHECKED BY: KJF

SHEET NO.  
**LS-3**



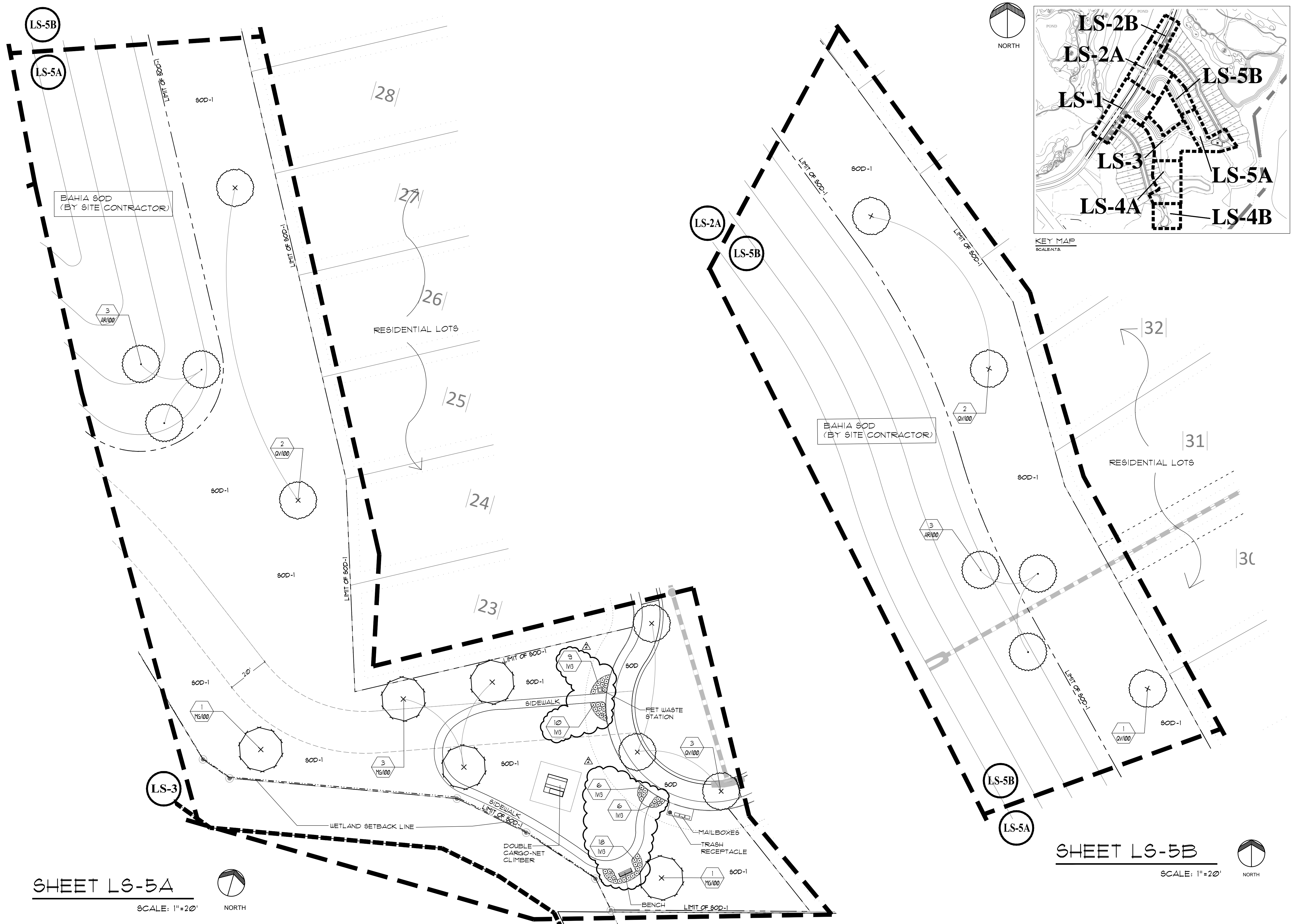
**FOREMAN CONSULTING, INC.**  
LANDSCAPE ARCHITECTURE  
DEVELOPMENT CONSULTING  
LAND PLANNING  
246 LAGAY PLACE LONGWOOD, FL 32719  
407-886-0818

NO.	DATE	DESCRIPTION	BY	CHK
1	01/16/15	PRELIMINARY	KJF	KJF
2	02/03/15	PRELIMINARY	KJF	KJF
3	02/03/15	PRELIMINARY	KJF	KJF
4	02/03/15	PRELIMINARY	KJF	KJF
5	02/03/15	PRELIMINARY	KJF	KJF
6	02/03/15	PRELIMINARY	KJF	KJF
7	02/03/15	PRELIMINARY	KJF	KJF
8	02/03/15	PRELIMINARY	KJF	KJF
9	02/03/15	PRELIMINARY	KJF	KJF
10	02/03/15	PRELIMINARY	KJF	KJF
11	02/03/15	PRELIMINARY	KJF	KJF
12	02/03/15	PRELIMINARY	KJF	KJF
13	02/03/15	PRELIMINARY	KJF	KJF
14	02/03/15	PRELIMINARY	KJF	KJF
15	02/03/15	PRELIMINARY	KJF	KJF
16	02/03/15	PRELIMINARY	KJF	KJF
17	02/03/15	PRELIMINARY	KJF	KJF
18	02/03/15	PRELIMINARY	KJF	KJF
19	02/03/15	PRELIMINARY	KJF	KJF
20	02/03/15	PRELIMINARY	KJF	KJF
21	02/03/15	PRELIMINARY	KJF	KJF
22	02/03/15	PRELIMINARY	KJF	KJF
23	02/03/15	PRELIMINARY	KJF	KJF
24	02/03/15	PRELIMINARY	KJF	KJF
25	02/03/15	PRELIMINARY	KJF	KJF
26	02/03/15	PRELIMINARY	KJF	KJF
27	02/03/15	PRELIMINARY	KJF	KJF
28	02/03/15	PRELIMINARY	KJF	KJF
29	02/03/15	PRELIMINARY	KJF	KJF
30	02/03/15	PRELIMINARY	KJF	KJF
31	02/03/15	PRELIMINARY	KJF	KJF
32	02/03/15	PRELIMINARY	KJF	KJF
33	02/03/15	PRELIMINARY	KJF	KJF
34	02/03/15	PRELIMINARY	KJF	KJF
35	02/03/15	PRELIMINARY	KJF	KJF
36	02/03/15	PRELIMINARY	KJF	KJF
37	02/03/15	PRELIMINARY	KJF	KJF
38	02/03/15	PRELIMINARY	KJF	KJF
39	02/03/15	PRELIMINARY	KJF	KJF
40	02/03/15	PRELIMINARY	KJF	KJF
41	02/03/15	PRELIMINARY	KJF	KJF
42	02/03/15	PRELIMINARY	KJF	KJF
43	02/03/15	PRELIMINARY	KJF	KJF
44	02/03/15	PRELIMINARY	KJF	KJF
45	02/03/15	PRELIMINARY	KJF	KJF
46	02/03/15	PRELIMINARY	KJF	KJF
47	02/03/15	PRELIMINARY	KJF	KJF
48	02/03/15	PRELIMINARY	KJF	KJF
49	02/03/15	PRELIMINARY	KJF	KJF
50	02/03/15	PRELIMINARY	KJF	KJF

**HARMONY NEIGHBORHOOD "O"**  
HARMONY, FLORIDA  
LANDSCAPE PLAN

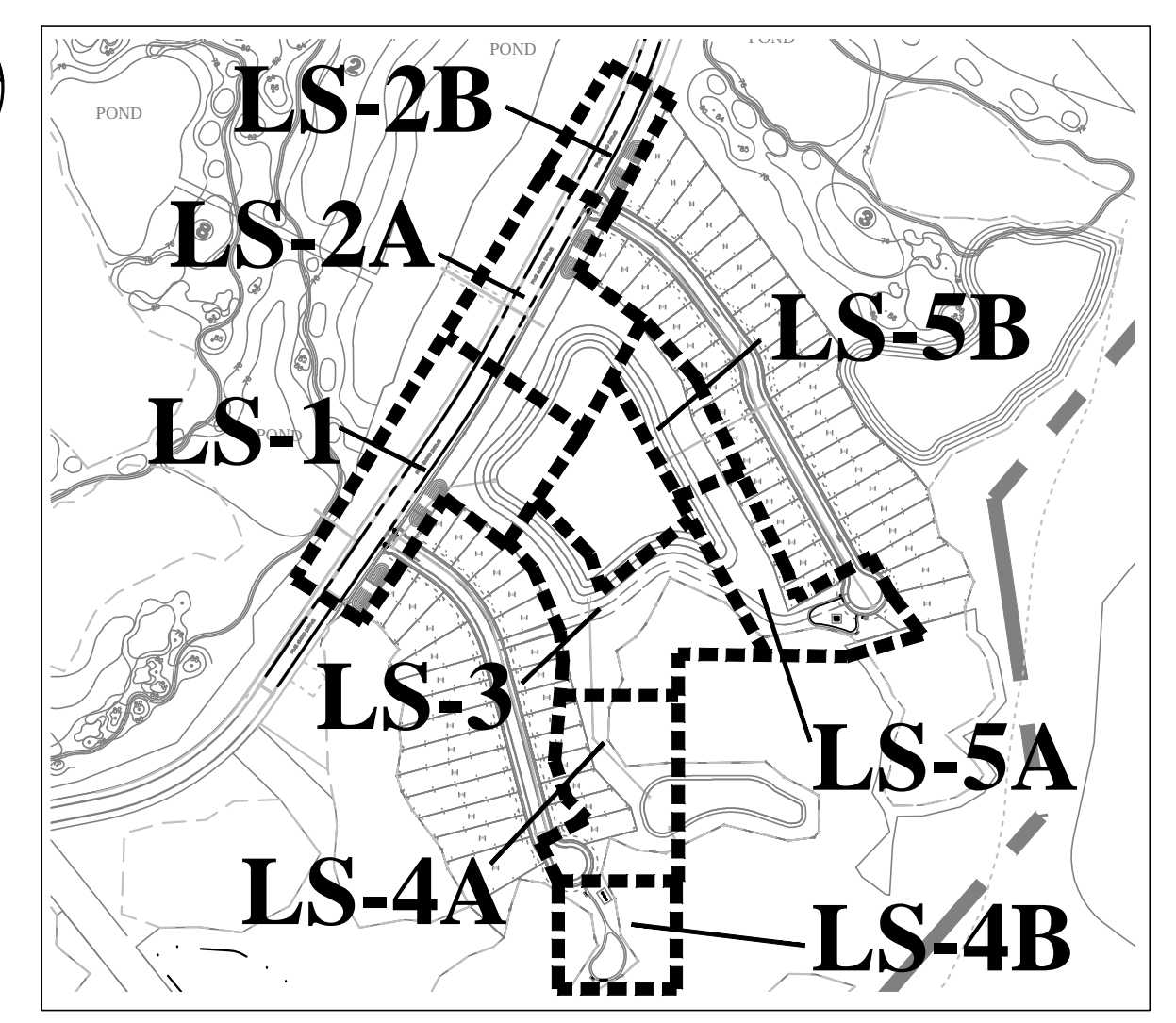
DATE: 01/16/15  
SCALE: 1"=20'  
DRAWN BY: RYM  
DESIGNED BY: KJF  
CHECKED BY: KJF

SHEET NO.  
**LS-4**



**SHEET LS-5A**  
SCALE: 1"=20'  
NORTH

**SHEET LS-5B**  
SCALE: 1"=20'  
NORTH



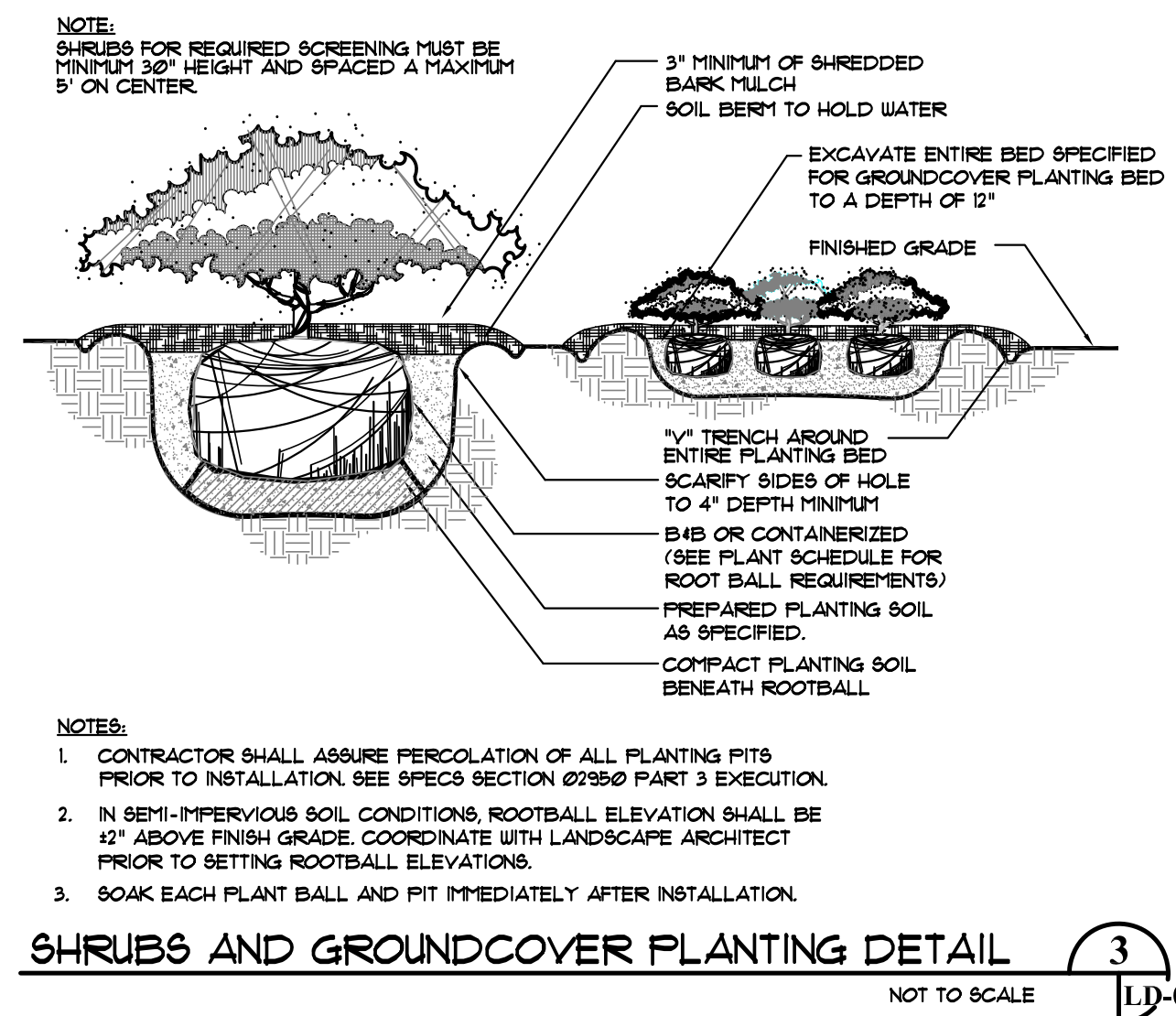
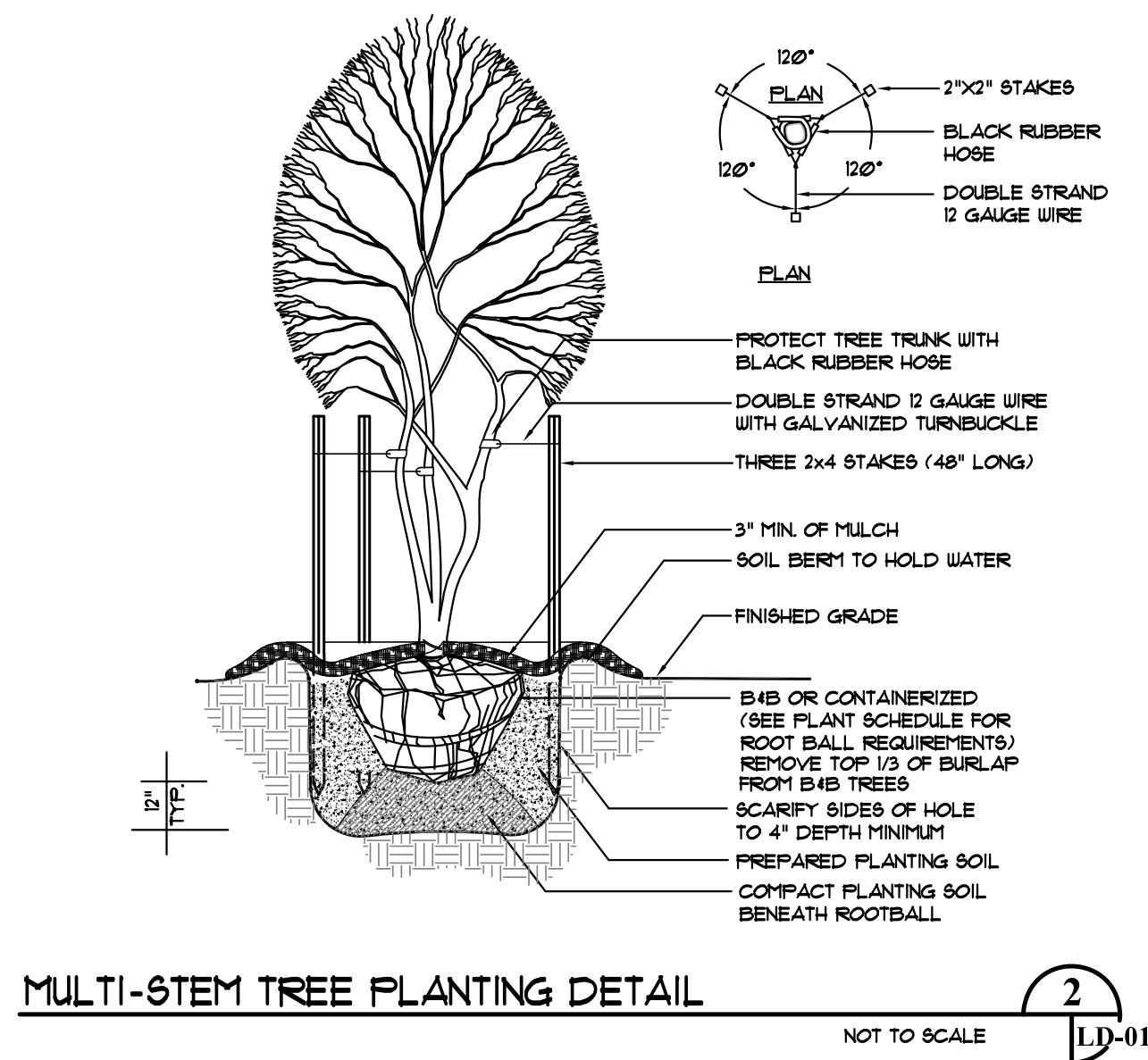
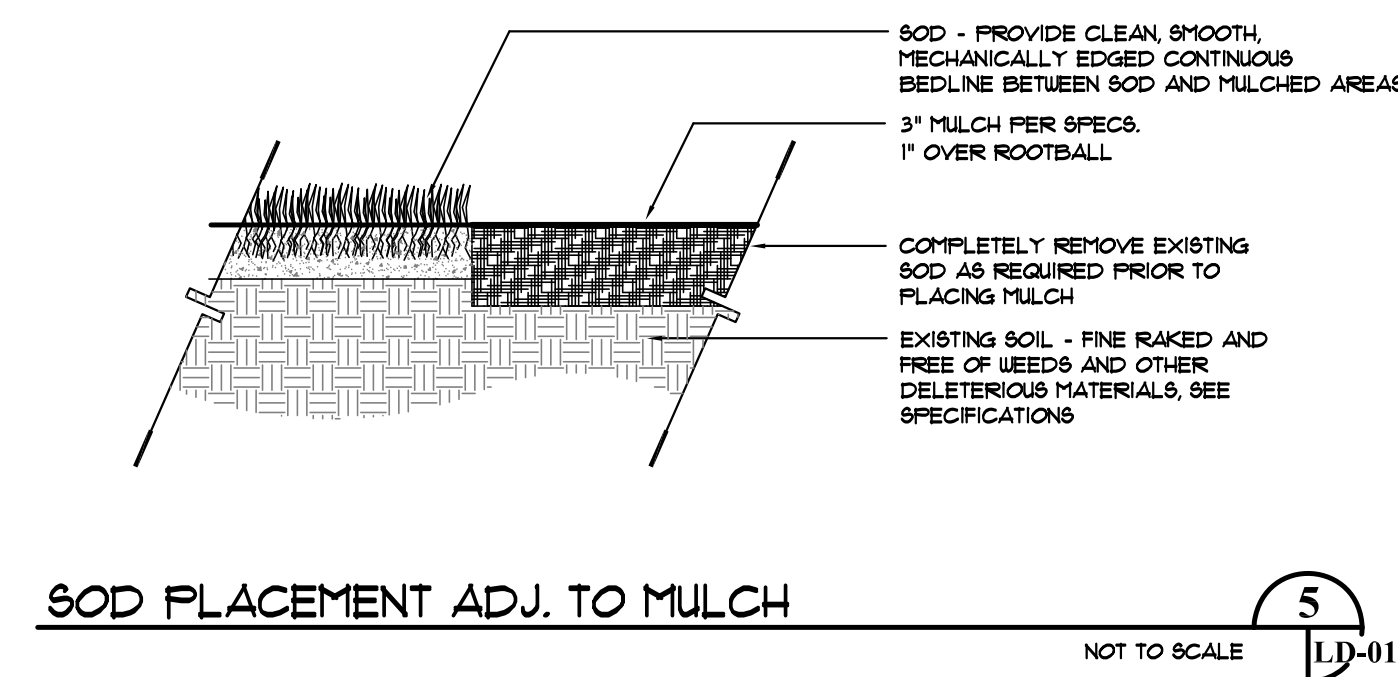
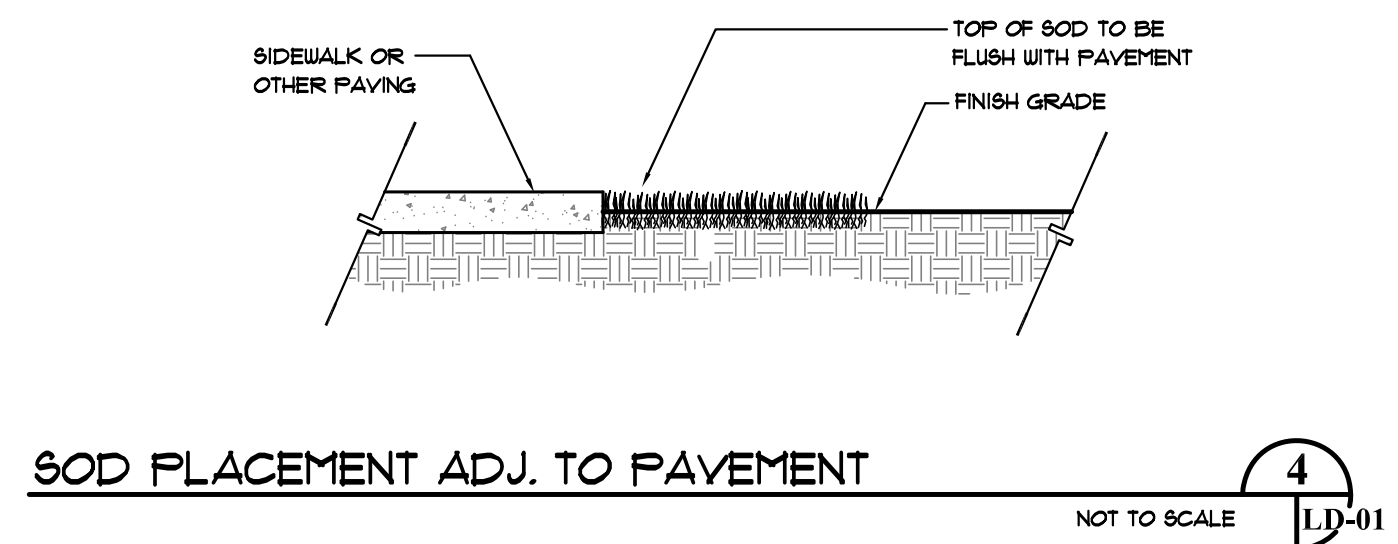
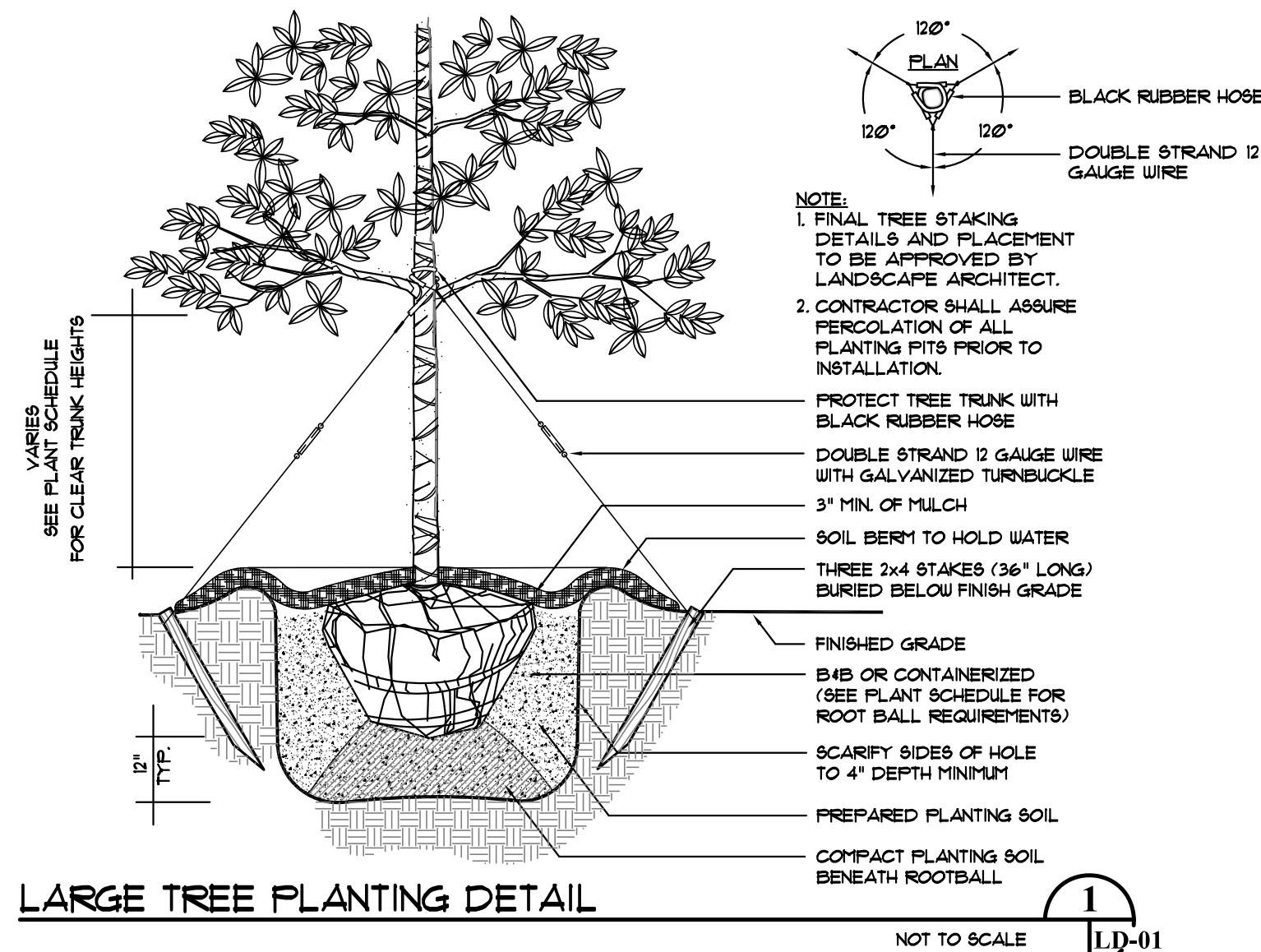
**FOREMAN CONSULTING, INC.**  
LANDSCAPE ARCHITECTURE  
DEVELOPMENT CONSULTING  
LAND PLANNING  
246 LAGAY PLACE LONGWOOD, FL 32779  
www.foremaninc.com (407) 884-0118

NO.	DATE	DESCRIPTION	BY	CHK	REG.
1	01/16/15	PRELIMINARY SOD REVISIONS	KJF		663
2	01/16/15	REVISIONS TREE PLANTS ADDITION	KJF		663
3					
4					
5					
6					
7					
8					
9					
10					
11					
12					
13					
14					
15					
16					
17					
18					
19					
20					
21					
22					
23					
24					
25					
26					
27					
28					
29					
30					
31					
32					
33					
34					
35					
36					
37					
38					
39					
40					
41					
42					
43					
44					
45					
46					
47					
48					
49					
50					

**HARMONY NEIGHBORHOOD "O"**  
HARMONY, FLORIDA  
LANDSCAPE PLAN

DATE:	01/16/15
SCALE:	1"=20'
DRAWN BY:	RYM
DESIGNED BY:	KJF
CHECKED BY:	KJF

SHEET NO.  
**LS-5**



**PLANT LIST:**

TREES				
QTY.	ABBREV.	BOTANICAL NAME	COMMON NAME	SIZE & SPECIFICATION
26	AR/100	<i>Acer rubrum</i> 'Autumn Blaze'	Red Maple	100 gal, 13'-15' x 8"x10", 3 1/2"-4 1/2" cal.
34	MG/100	<i>Magnolia grandiflora</i>	Southern Magnolia	100 gal, 12'-14' x 5'-6", 4" cal.
94	PE/30	<i>Pinus ellioti</i>	Slash Pine	30 gal, 8'-9' x 4'-5', 2" cal.
21	QV/100	<i>Quercus virginiana</i>	Live Oak	100 gal, 14' x 10', 4" cal. or field grown equal (with L.A. approval)
SHRUBS & GROUND COVER				
QTY.	ABBREV.	BOTANICAL NAME	COMMON NAME	SIZE & SPECIFICATION
84	MC/3	<i>Muhlenbergia capillaris</i>	Muhly Grass	3 gal, 24"-30" x 18"-24", 30" o.c.
118	IV/3	<i>Ilex vomitoria</i>	Yaupon Holly	3 gal, 15"-18" ht, 15"-18" spr, 24" o.c.
40	VO/3	<i>Viburnum odoratissimum</i>	Sweet Viburnum	3 gal, 24"-30" x 24"-30", 30" o.c.
SOD				
QTY.	ABBREV.	BOTANICAL NAME	COMMON NAME	SIZE & SPECIFICATION
83,000 SF.	SOD	<i>Stenotaphrum secundatum</i>	St. Augustine 'Floratan'	solid sod
151,000 SF.	SOD-1	<i>Paspalum notatum</i>	Bahia Sod	solid sod

**LANDSCAPE NOTES:**

- ALL PLANT MATERIAL SHALL BE FLORIDA GRADE NO. 1 OR BETTER AS SPECIFIED IN "GRADES AND STANDARDS FOR NURSERY PLANTS", "PARTS 1 AND 2, BY DIVISION OF PLANT INDUSTRY, FLORIDA", DEPARTMENT OF AGRICULTURE AND CONSUMER SERVICES, AND SHALL CONFORM TO CURRENT AMERICAN ASSOCIATION OF NURSERYMEN 'STANDARDS FOR NURSERY STOCK', LATEST EDITION.
- THE LANDSCAPE CONTRACTOR SHALL BE RESPONSIBLE FOR VERIFICATION OF QUANTITIES IN THE PLANT LIST. IN THE EVENT OF A CONFLICT BETWEEN QUANTITIES ON THE PLANT LIST AND THE PLANS, THE PLANS SHALL CONTROL AND THE DISCREPANCY SHALL BE BROUGHT TO THE ATTENTION OF THE LANDSCAPE ARCHITECT PRIOR TO BID. ANY DEVIATION FROM THESE PLANS MUST BE APPROVED BY THE LANDSCAPE ARCHITECT OR OWNER'S REPRESENTATIVE.
- CONTRACTOR IS RESPONSIBLE FOR COMPLIANCE WITH ALL APPLICABLE BUILDING CODES, ORDINANCES AND LOCAL REGULATIONS. THE CONTRACTOR SHALL BE RESPONSIBLE FOR OBTAINING ALL NECESSARY PERMITS TO PERFORM THE WORK.
- THE LANDSCAPE CONTRACTOR IS RESPONSIBLE FOR INSPECTION OF EXISTING CONDITIONS AND PROMPTLY REPORTING ALL DISCREPANCIES AND IMPROPER CONDITIONS (WETNESS, MUCK, DEBRIS, ECT) TO LANDSCAPE ARCHITECT PRIOR TO BIDDING. CONTRACTOR IS RESPONSIBLE FOR SOIL ANALYSIS PRIOR TO INSTALLATION OF PLANTINGS, AND IS RESPONSIBLE FOR ALL SOIL AMENDMENTS TO CONFORM TO SPECIFICATIONS.
- THE LANDSCAPE CONTRACTOR SHALL ACQUAINT HIMSELF WITH ALL CIVIL DRAWING AS THEY RELATE TO PAVING SITE GRADING, AND ALL UTILITIES, (INCLUDING WATER, SEWER AND ELECTRICAL SUPPLY) TO PRECLUDE ANY MISUNDERSTANDING AND ENSURE TROUBLE FREE INSTALLATION. THE EXACT LOCATION OF ALL EXISTING STRUCTURES, UNDERGROUND UTILITIES, EXISTING UNDERGROUND SPRINKLERS AND PIPE MAY NOT BE INDICATED ON DRAWINGS. THE CONTRACTOR SHALL CONDUCT HIS WORK IN A MANNER TO PREVENT INTERRUPTION OR DAMAGE TO EXISTING SYSTEMS WHICH MUST REMAIN OPERATIONAL. THE CONTRACTOR SHALL PROTECT UTILITY SERVICES WHICH MUST REMAIN OPERATIONAL AND SHALL BE RESPONSIBLE FOR THEIR REPLACEMENT IF DAMAGED BY HIM.
- ALL PLANTING BEDS SHALL RECEIVE A 3" LAYER (1" OVER ROOTBALL) OF PINE BARK MULCH.

DESCRIPTION	DATE	BY	CHK	DATE
PRE-CONSTRUCTION SOD REVISIONS				
REVISED PER PARKS ADDITION				

HARMONY NEIGHBORHOOD O  
 LANDSCAPE PLAN  
 HARMONY, FLORIDA  
 LANDSCAPE DETAILS AND PLANT LIST

DATE: 01/16/15  
 SCALE: N.T.S.  
 DRAIN BY: RYM  
 DESIGNED BY: KJF  
 CHECKED BY: KJF

SHEET NO.  
 LD-1