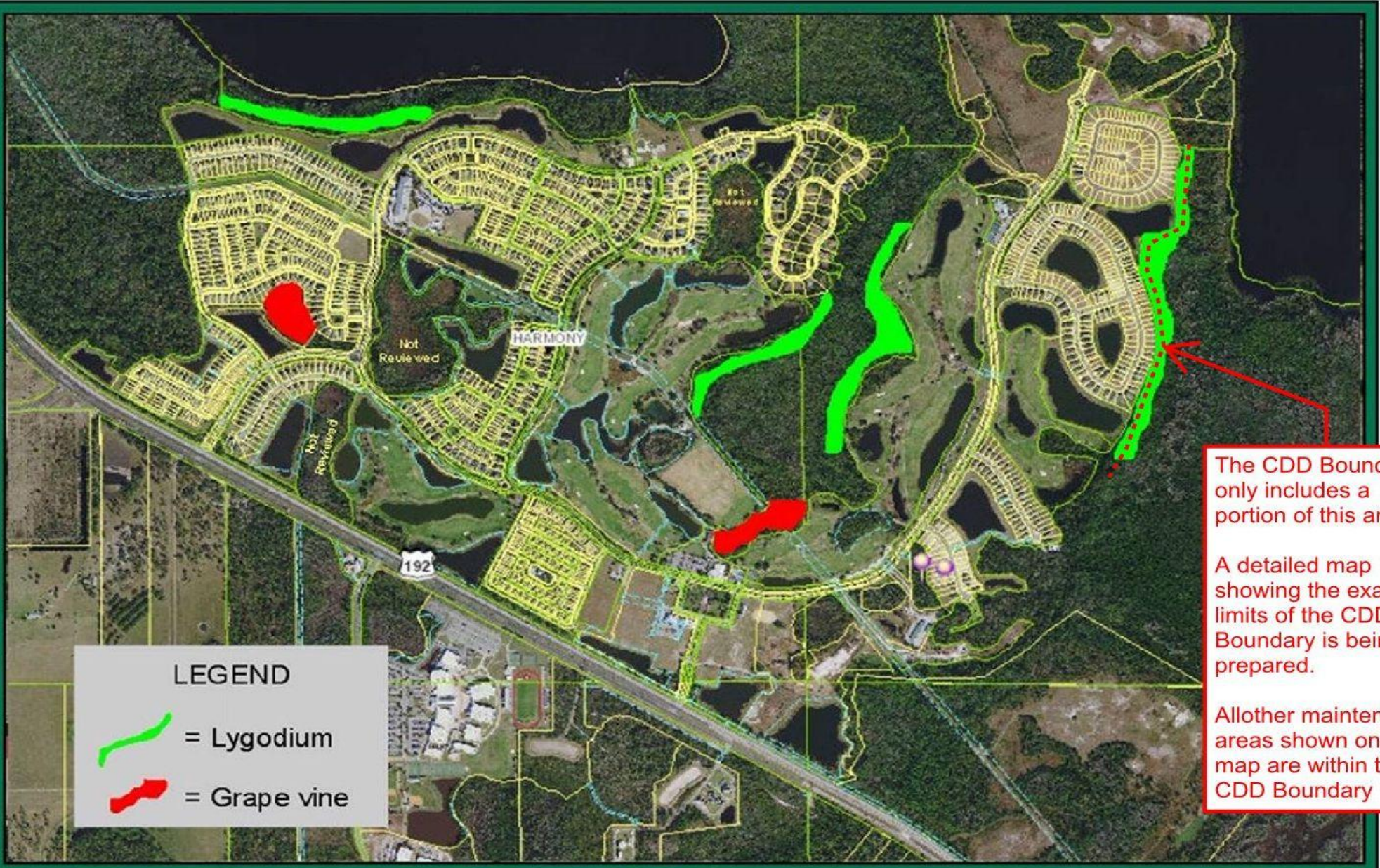


## Harmony Community Development District Field Services Monthly Wetland Report


#	Maintenance Area Name	Acres	Invasive Species VEGETATION IDENTIFICATION Infestation Severity High, Medium, Low	November 2019 (End-of-Month Status)  Prescribed Treatment	Treatment Status  Pending Activities Percent Complete
<a href="#">Map Tab Shows Local QuickMap</a> <a href="#">Click Links Below For Internet Maps</a>					
1	<a href="#">Buck Lake - South</a>	1.4	LYGODIUM HIGH	Spraying only with mixture of RoundUp and Cutrine.	50 percent complete at this time. Will be done in early December.
2	<a href="#">Green - South</a>	1.0	GRAPEVINE MEDIUM	Sprayed with RoundUp and cut the vines running up the base of the tree.	100 percent complete.
3	<a href="#">Golf Course - West</a>	2.3	LYGODIUM HIGH		
4	<a href="#">Golf Course - East</a>	3.7	LYGODIUM HIGH		
5	<a href="#">Golf Course - South</a>	2.8	GRAPEVINE MEDIUM		
6	<a href="#">The Lakes - East</a>	3.1	LYGODIUM HIGH		
7	{Future}	--	----		
8	{Future}	--	----		
9	{Future}	--	----		
10	{Future}	--	----		
11	{Future}	--	----		
12	{Future}	--	----		
13	{Future}	--	----		
14	{Future}	--	----		


<b>TOTAL ACRES</b>	<b>102.3</b>	Total size (in acres) of all foliage maintenance areas
<b>AVG. TREATED ACRES</b>	<b>20.5</b>	Average infested foliage treated area is roughly <b>20 %</b>

**Additional Notes:** This month we have finished up the treatment of the lygodium in the area that runs along Dark Sky that backs up to Goldflower Avenue. This was about a total of three weeks of going through and cutting all vines reachable and spraying with Roundup after. Once we started to visibly see the grape vines dying we went back to where we started and retreated anything that was missed or we could not reach the first time. We have now begun the treatment of lygodium alongg Buck Lake which is mostly requiring sparing of the fern and some cutting but mostly just to make a path way to get the hose and sprayer back far enough to reach all the way back towards lake. Results are looking very well everything we are spraying is dying off and the following week we are going back to same location to check and retreat any ares missed. There are very large areas of the lygodium so it is hard to get to all of one area at one time so we are making sure to follow up on all the areas to ensure all has been treated.



**LEGEND**

 = Lygodium

 = Grape vine

The CDD Boundary only includes a portion of this area.

A detailed map showing the exact limits of the CDD Boundary is being prepared.

All other maintenance areas shown on this map are within the CDD Boundary

 Austin Environmental Consultants, Inc.  
 316 Church Street  
 Kissimmee, Florida 34741  
 407.935.0535

**FIGURE**  
**1**

**VEGETATION TREATMENT MAP**

**HARMONY CDD**  
**OSCEOLA COUNTY, FL**