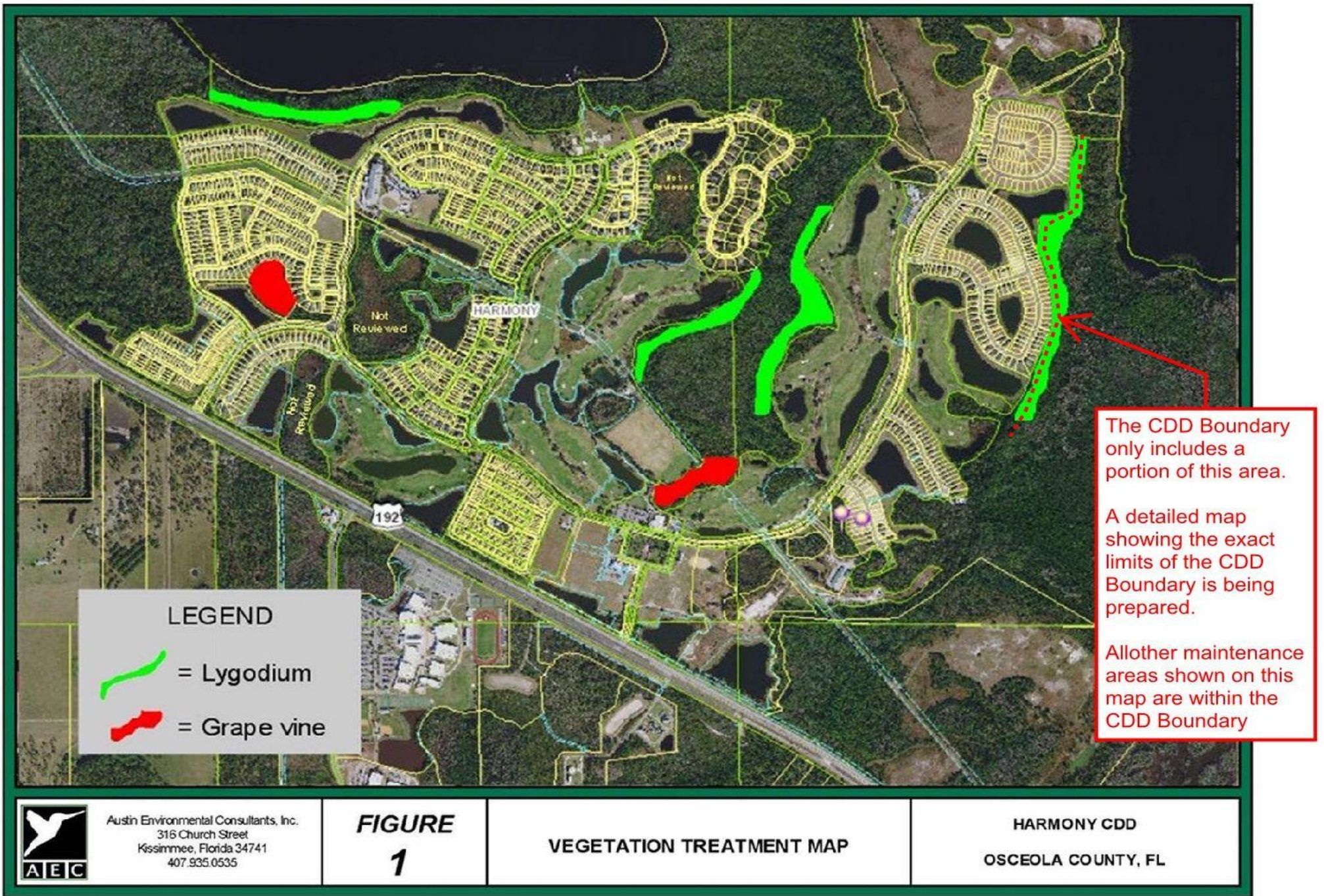


## Harmony Community Development District Field Services Monthly Wetlands Report

#	Maintenance Area Name	Acres	Invasive Species VEGETATION IDENTIFICATION Infestation Severity High, Medium, Low	February 2020 (End-of-Month Status)  Prescribed Treatment	Treatment Status  Pending Activities Percent Complete
<b>Map Tab Shows Local QuickMap</b> <b>Click Links Below For Internet Maps</b>					
1	Buck Lake - South	1.4	LYGODIUM HIGH	Spraying only with mixture of RoundUp and Cutrine.	Only small areas left to treat. Most are sprayed and dying.
2	Green - South	1.0	GRAPEVINE MEDIUM	Sprayed with RoundUp & cut the vines running up the base of the trees.	100 percent complete.
3	Golf Course - West	2.3	LYGODIUM HIGH		
4	Golf Course - East	3.7	LYGODIUM HIGH		
5	Golf Course - South	2.8	GRAPEVINE MEDIUM	Treating with RoundUp.	Now treating one corner of area, but entire area needs treatment.
6	The Lakes - East	3.1	LYGODIUM HIGH	Treating with RoundUp.	Have starting spraying outside areas and will progress inward.
7	{Future}	--	----		
8	{Future}	--	----		
9	{Future}	--	----		
10	{Future}	--	----		
11	{Future}	--	----		
12	{Future}	--	----		
13	{Future}	--	----		
14	{Future}	--	----		
<b>TOTAL ACRES</b>		<b>10.2</b>	Total size (in acres) of all foliage maintenance areas		
<b>AVG. TREATED ACRES</b>		<b>2.0</b>	Average infested foliage treated area is roughly <b>20 %</b>		
<b>Additional Notes:</b> Buck Lake area has been along process most heavily covered areas have been sprayed now and is dying. We are working now on the smaller harder areas to reach which are requiring us to treat and access with backpack sprayers only. We have moved to large areas around the areas surrounding the large dog park as well as to golf course south behind swim club that is about 80 percent covered in lygodium; which over time now we have discovered must be treated a few times and also cut through to detach any remaining fern to kill all of it that is all the way up the trees. The only down side we have found is that we are already max'd out on our equipment and personnel.					







The CDD Boundary only includes a portion of this area.

A detailed map showing the exact limits of the CDD Boundary is being prepared.

All other maintenance areas shown on this map are within the CDD Boundary

**LEGEND**

 = Lygodium

 = Grape vine

 Austin Environmental Consultants, Inc.  
 316 Church Street  
 Kissimmee, Florida 34741  
 407.935.0535

**FIGURE**  
**1**

**VEGETATION TREATMENT MAP**

**HARMONY CDD**  
**OSCEOLA COUNTY, FL**