



AREAS BEING MAINTAINED BY THE HARMONY CDD

LEGEND

- COMMUNITY PARKS & OPEN SPACES
- UNDEVELOPED OPEN SPACES
- CDD AND/OR FDOT EASEMENTS FOR INGRESS / EGRESS, MAINTENANCE AND CONSTRUCTION
- HIGHWAY U.S. 192 MEDIAN & R.O.W.
- HARMONY CDD BOUNDARY
- WATER SURFACE
- CONSERVATION AREAS

Lot# Stored By: bnc, 6/30/2016 9:26:29 AM
 Z:\PROJECTS\1009.000 Harmony CDD Maintenance Map\ Harmony CDD Maintenance Map\ Harmony CDD St. with Neighborhood Numbers Title NORTH DE-30.16 mxd.dwg Plotted By: bnc June 30, 2016, 9:27:27 AM



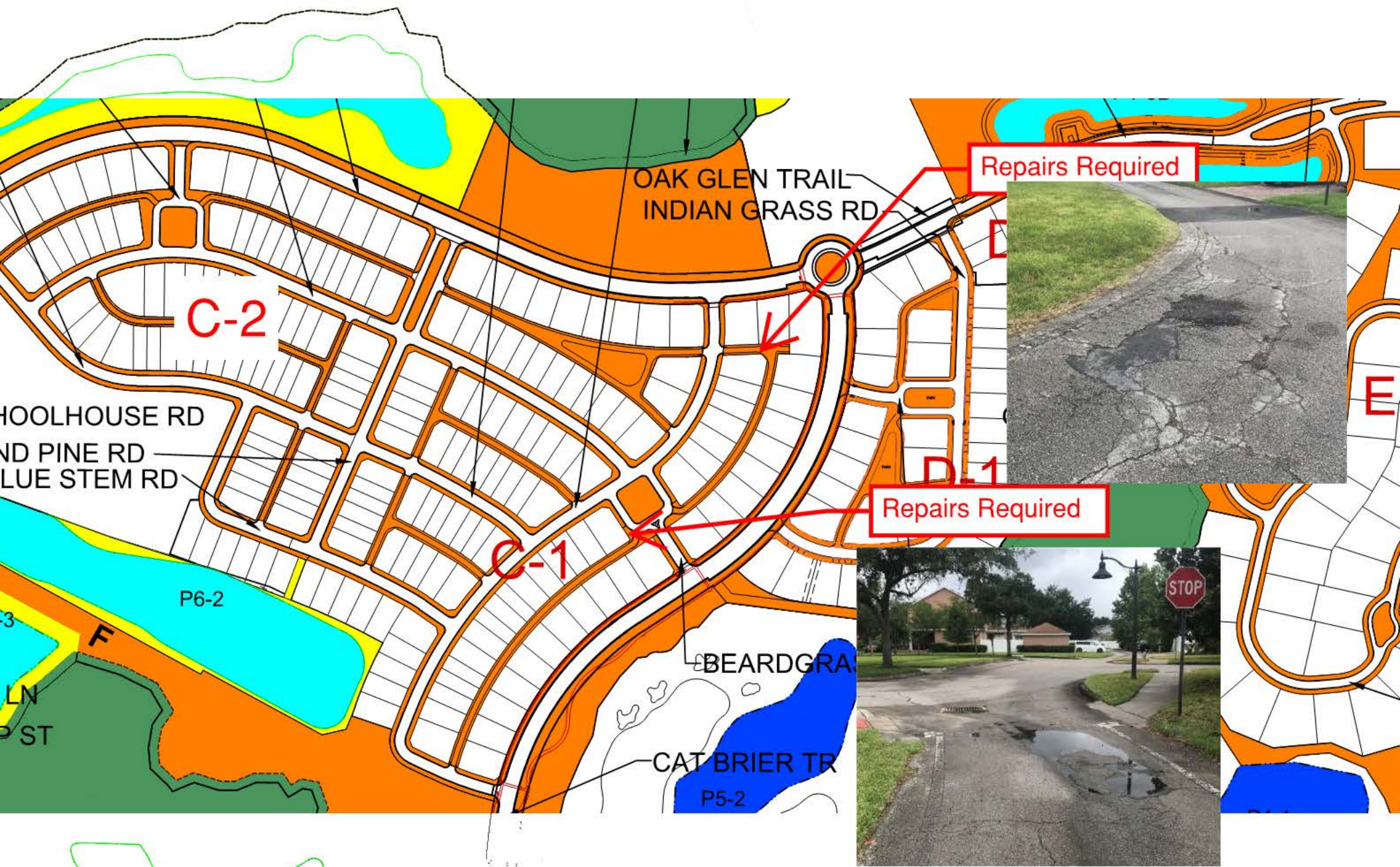
Civil Engineer
STEVEN N. BOYD, P.E.
 License No. 43225

HARMONY CDD
 OSCEOLA COUNTY, FLORIDA
 PREPARED FOR HARMONY DEVELOPMENT COMPANY

CDD STREET NAMES MAP

Date: 6/30/16
 Scale: 1" = 400'
 Project No: 1009.000
 Drawn By:
 Designed By:
 Checked By:

SHEET NO.
A



NEIGHBORHOOD C-1



NEIGHBORHOOD G





REPAIR TO RADIUS OF ALLEY CORNER REQUIRED.

NEIGHBORHOOD A-1