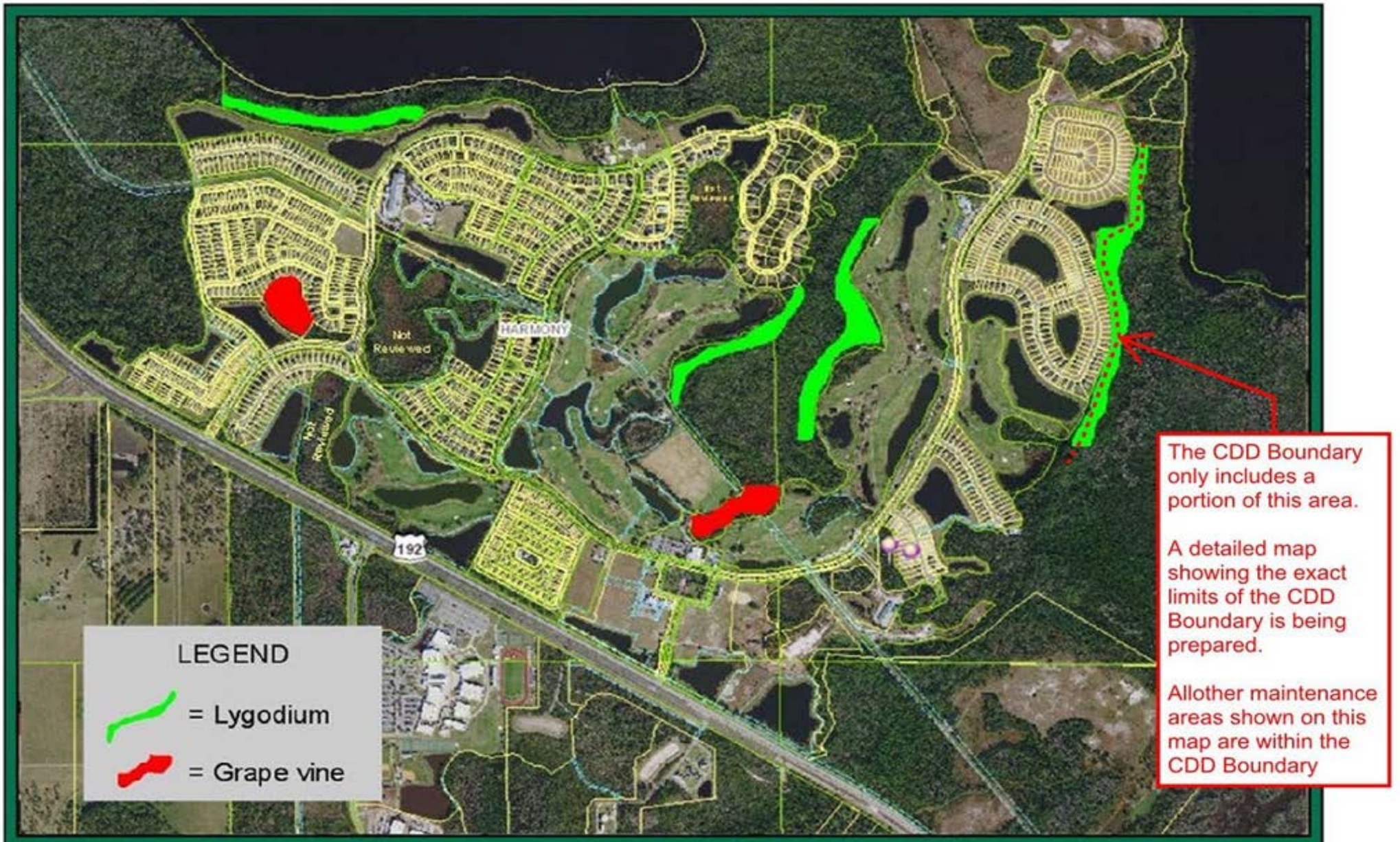


Harmony Community Development District Field Services Monthly Wetland Report

#	Maintenance Area Name	Acres	Invasive Species VEGETATION IDENTIFICATION Infestation Severity High, Medium, Low	Reporting Date: April 2020 Prescribed Treatment	Treatment Status Pending Activities Percent Complete
Map Tab Shows Local QuickMap Click Links Below For Internet Maps					
1	Buck Lake - South	1.4 ?	LYGODIUM HIGH	Spraying only with a mixture of roundup and cutrine.	only small areas left to treat most has been sprayed and is dying
2	Green - South	1.0 ?	GRAPEVINE MEDIUM	Sprayed with round up and cut the vines running up the base of the tree.	100 percent complete
3	Golf Course - West	2.3 ?	LYGODIUM HIGH	Started to treat	Large amounts of fern and grape vine.
4	Golf Course - East	3.7 ?	LYGODIUM HIGH	Started to treat	
5	Golf Course - South	2.8 ?	GRAPEVINE MEDIUM	treating with roundup	have been treating one corner of the area the whole section almost needs treatment
6	The Lakes - East	3.1 ?	LYGODIUM HIGH	treating with round up	starting to spray just on the outside areas
7	{Future}	0.0	----		
8	{Future}	0.0	----		
9	{Future}	0.0	----		
10	{Future}	0.0	----		
11	{Future}	0.0	----		
12	{Future}	0.0	----		
13	{Future}	0.0	----		
14	{Future}	0.0	----		
15	{Future}	0.0	----		

TOTAL ACRES	1.5	Total size (in acres) of all foliage maintenance areas
AVG. TREATED ACRES		Average infested foliage treated area is roughly 20%

Additional Notes: This month, we have been checking all of our previous treated areas. Treating any new growth we have seen pop up. The further we go into the woods, we are finding more larger areas of fern along with huge trees completely covered with grapevine that is killing them. The process is very time consuming being we have found the only way to kill these species is to not only spray but cut everything growing up the trees. This has been a lot more of a problem then we first thought as this has been left unchecked by our previous company we used and no action was ever taken.



Austin Environmental Consultants, Inc.
315 Church Street
Kissimmee, Florida 34741
407.935.0535

FIGURE
1

VEGETATION TREATMENT MAP

HARMONY CDD
OSCEOLA COUNTY, FL