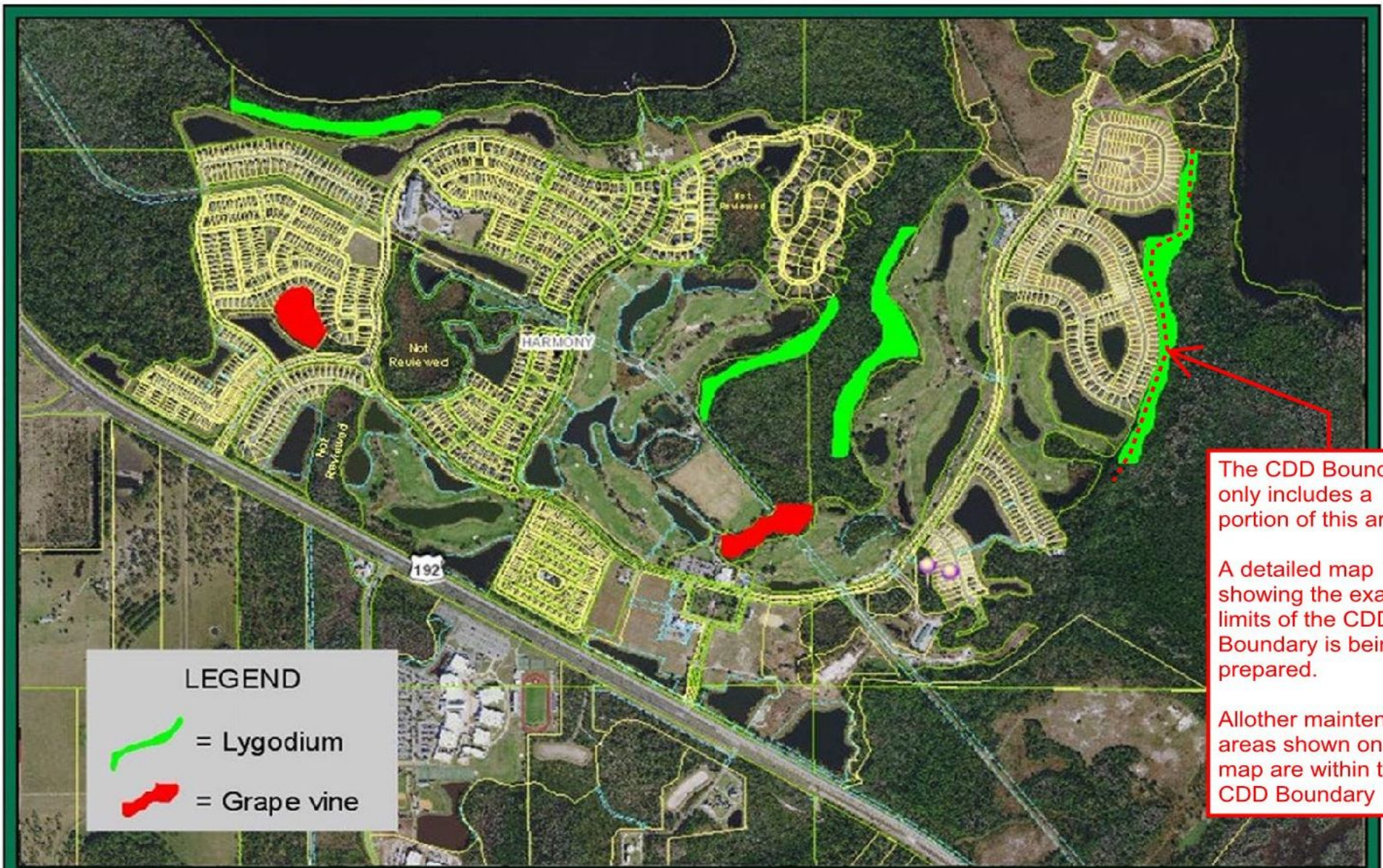


Harmony Community Development District Field Services Monthly Wetlands Report

#	Maintenance Area Name	Acres	Invasive Species VEGETATION IDENTIFICATION Infestation Severity High, Medium, Low	April 2020 (End-of-Month Status) Prescribed Treatment	Treatment Status Pending Activities Percent Complete
Map Tab Shows Local QuickMap Click Links Below For Internet Maps					
1	Buck Lake - South	1.4	LYGODIUM HIGH		
2	Green - South	1.0	GRAPEVINE MEDIUM		
3	Golf Course - West	2.3	LYGODIUM HIGH		
4	Golf Course - East	3.7	LYGODIUM HIGH		
5	Golf Course - South	2.8	GRAPEVINE MEDIUM		
6	The Lakes - East	3.1	LYGODIUM HIGH		
7	{Future}	--	----		
8	{Future}	--	----		
9	{Future}	--	----		
10	{Future}	--	----		
11	{Future}	--	----		
12	{Future}	--	----		
13	{Future}	--	----		
14	{Future}	--	----		
TOTAL ACRES		14.3	Total size (in acres) of all foliage maintenance areas		
AVG. TREATED ACRES		5.7	Average infested foliage treated area is roughly 40 %		
Additional Notes: This month we !					





The CDD Boundary only includes a portion of this area.

A detailed map showing the exact limits of the CDD Boundary is being prepared.

All other maintenance areas shown on this map are within the CDD Boundary

LEGEND

 = Lygodium

 = Grape vine



Austin Environmental Consultants, Inc.
 316 Church Street
 Kissimmee, Florida 34741
 407.935.0535

FIGURE
1

VEGETATION TREATMENT MAP

HARMONY CDD
OSCEOLA COUNTY, FL