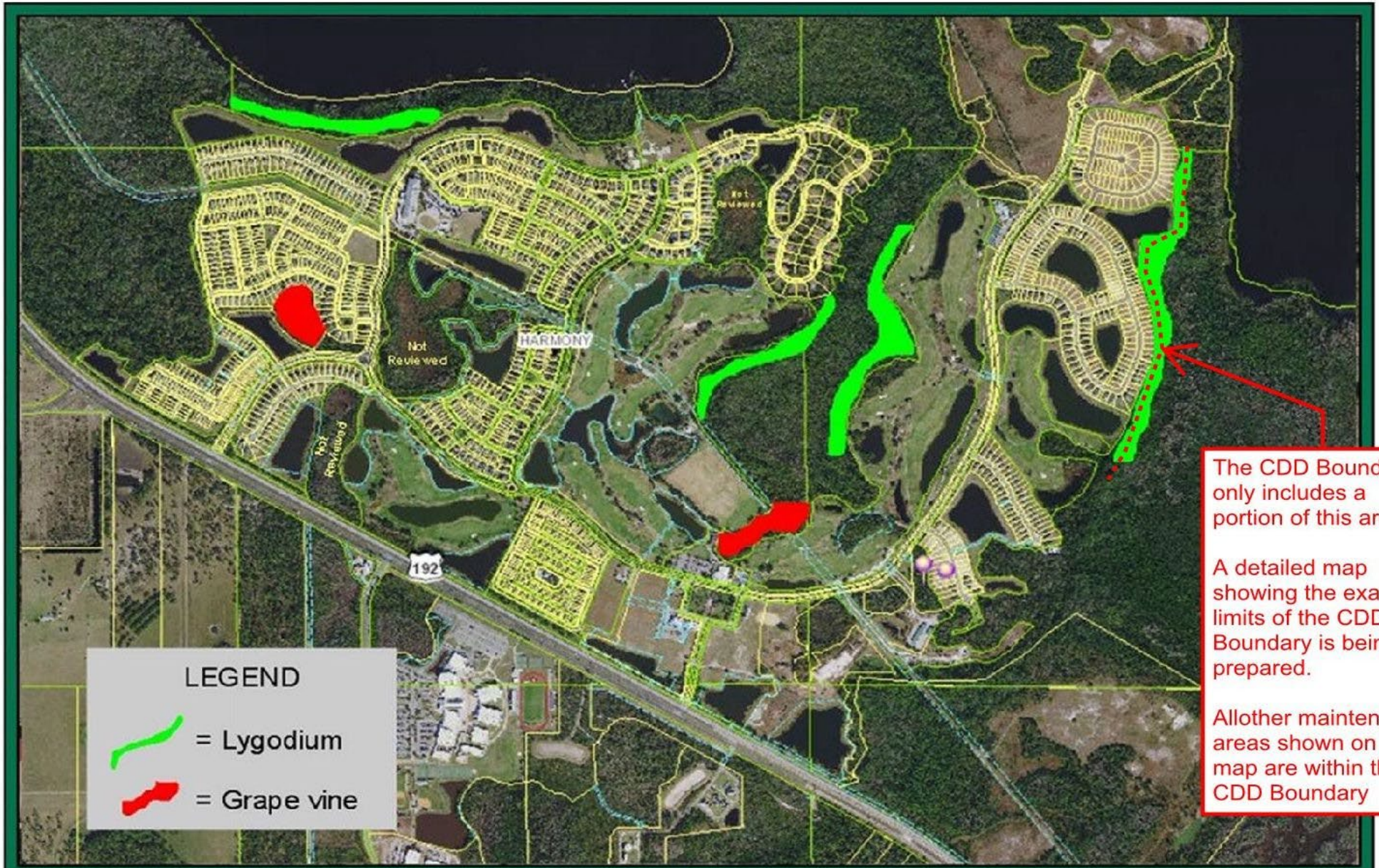


Harmony Community Development District Field Services Monthly Wetland Report

#	Maintenance Area Name	Acres	Invasive Species	Reporting Date: JULY-AUGUST	Treatment Status
Map Tab Shows Local QuickMap Click Links Below For Internet Maps			Vegetation Identification Infestation Severity High, Medium, Low	Prescribed Treatment	Pending Activities Percent Complete
1	Buck Lake - South	1.4 ?	Lygodium High	Spraying only with a mixture of roundup and cutrine.	only small areas left to treat most has been sprayed and is dying
2	Green - South	1.0 ?	Grapevine Medium	Sprayed with round up and cut the vines running up the base of the tree.	Retreating some of the main areas for new growth.
3	Golf Course - West	2.3 ?	Lygodium High	Spraying along a lot of the main sections to gain access further into the woods.	Large amounts of fern and grape vine.
4	Golf Course - East	3.7 ?	Lygodium High	Started to treat	
5	Golf Course - South	2.8 ?	Grapevine Medium	treating with roundup	Spraying mostly fern once treated and further into the interior areas.
6	The Lakes - East	3.1 ?	Lygodium High	treating with round up	starting to spray just on the outside areas
7	{Future}	0.0	----		
8	{Future}	0.0	----		
9	{Future}	0.0	----		
10	{Future}	0.0	----		
11	{Future}	0.0	----		
12	{Future}	0.0	----		
13	{Future}	0.0	----		
14	{Future}	0.0	----		
15	{Future}	0.0	----		
TOTAL ACRES		1.2	Total size (in acres) of all foliage maintenance areas		
AVG. TREATED ACRES			Average infested foliage treated area is roughly 20%		
<p>Additional Notes: This month I have sprayed part of the green south section of once previous treated areas for new growth and cut some vines that were coming back. Also we have been working mainly on the golf course south and west as there is a lot of spraying just to push our way back into the woods where there is more fern especially. There is a lot of the grapevines on the outside covering most of the pine trees along the front of the conservation areas.</p>					





The CDD Boundary only includes a portion of this area.

A detailed map showing the exact limits of the CDD Boundary is being prepared.

All other maintenance areas shown on this map are within the CDD Boundary

LEGEND

-  = Lygodium
-  = Grape vine



Austin Environmental Consultants, Inc.
316 Church Street
Kissimmee, Florida 34741
407.935.0535

FIGURE
1

VEGETATION TREATMENT MAP

HARMONY CDD
OSCEOLA COUNTY, FL