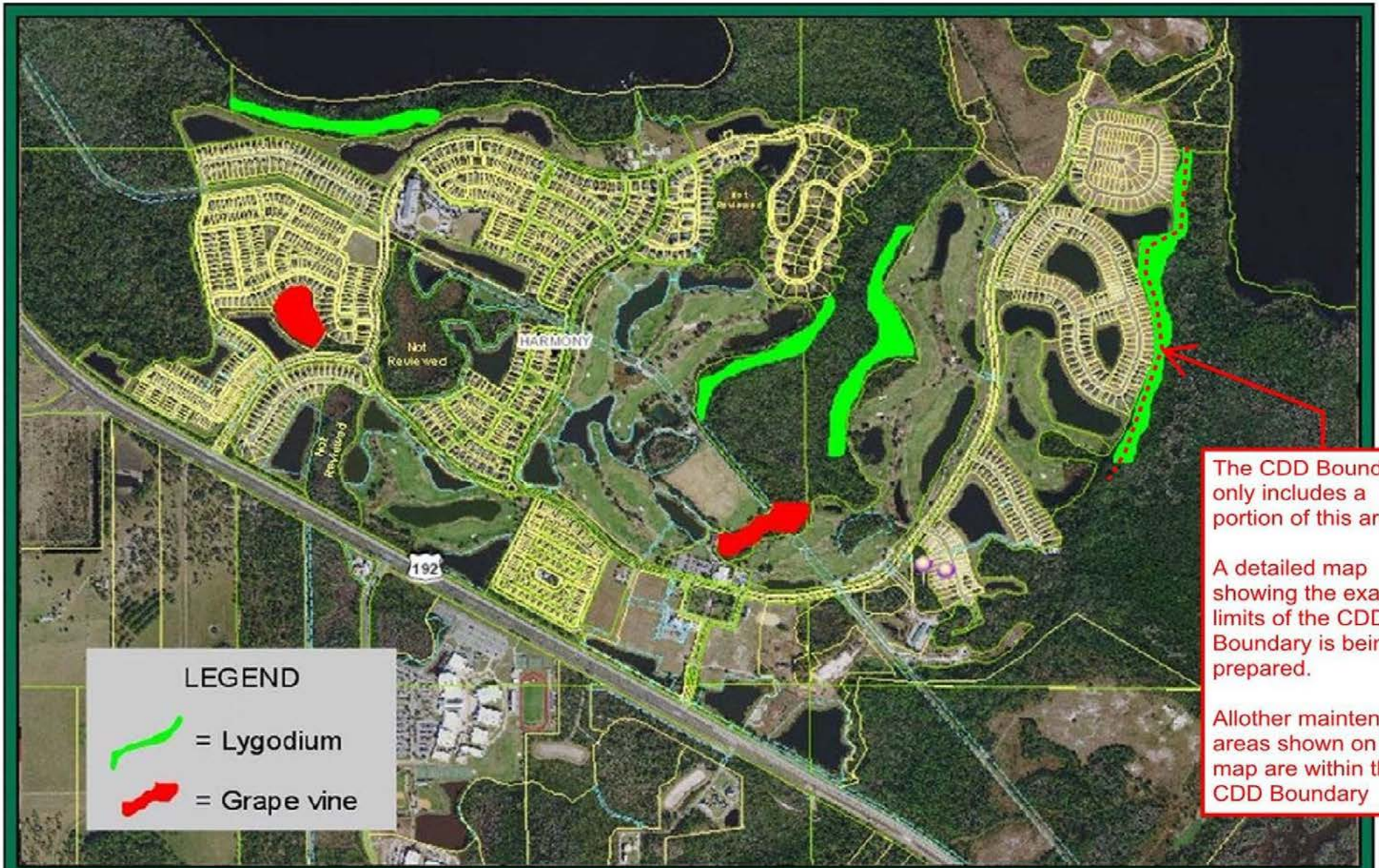


Harmony Community Development District Field Services Monthly Wetland Report

#	Maintenance Area Name	Acres	Invasive Species	Reporting Date: November-December	Treatment Status
Map Tab Shows Local QuickMap Click Links Below For Internet Maps			Vegetation Identification Infestation Severity High, Medium, Low	Prescribed Treatment	Pending Activities Percent Complete
1	Buck Lake - South	1.4 ?	Lygodium High	Spraying only with a mixture of roundup and cutrine.	Sprayed and checked some small areas and working on a few more sections.
2	Green - South	1.0 ?	Grapevine Medium	Sprayed with round up and cut the vines running up the base of the tree.	Retreating some of the main areas for new growth.
3	Golf Course - West	2.3 ?	Lygodium High	Spraying along a lot of the main sections to gain access further into the woods.	Large amounts of fern and grape vine.
4	Golf Course - East	3.7 ?	Lygodium High	Started to treat	large pockets of grapevine and fern.
5	Golf Course - South	2.8 ?	Grapevine Medium	treating with roundup	Spraying mostly fern once treated and further into the interior areas.
6	The Lakes - East	3.1 ?	Lygodium High	treating with round up	starting to spray just on the outside areas
7	{Future}	0.0	----		
8	{Future}	0.0	----		
9	{Future}	0.0	----		
10	{Future}	0.0	----		
11	{Future}	0.0	----		
12	{Future}	0.0	----		
13	{Future}	0.0	----		
14	{Future}	0.0	----		
15	{Future}	0.0	----		
TOTAL ACRES		0.6	Total size (in acres) of all foliage maintenance areas		
AVG. TREATED ACRES			Average infested foliage treated area is roughly 20%		

Additional Notes: This month we have started back on the golf course east area and continued around the area that backs up to the large dog park. The areas from behind swim club and along the golf course that runs along hole 18 and out towards the lakes are very heavy with fern. Also a lot of the low areas are very wet and under water still so it is very hard to access. So we are forced to jump around a lot to different areas until we are able to get to the areas further back in the woods.





The CDD Boundary only includes a portion of this area.

A detailed map showing the exact limits of the CDD Boundary is being prepared.

All other maintenance areas shown on this map are within the CDD Boundary

LEGEND

 = Lygodium

 = Grape vine



Austin Environmental Consultants, Inc.
316 Church Street
Kissimmee, Florida 34741
407.935.0535

FIGURE 1

VEGETATION TREATMENT MAP

**HARMONY CDD
OSCEOLA COUNTY, FL**