






  
**THE LAKES**  
AT HARMONY

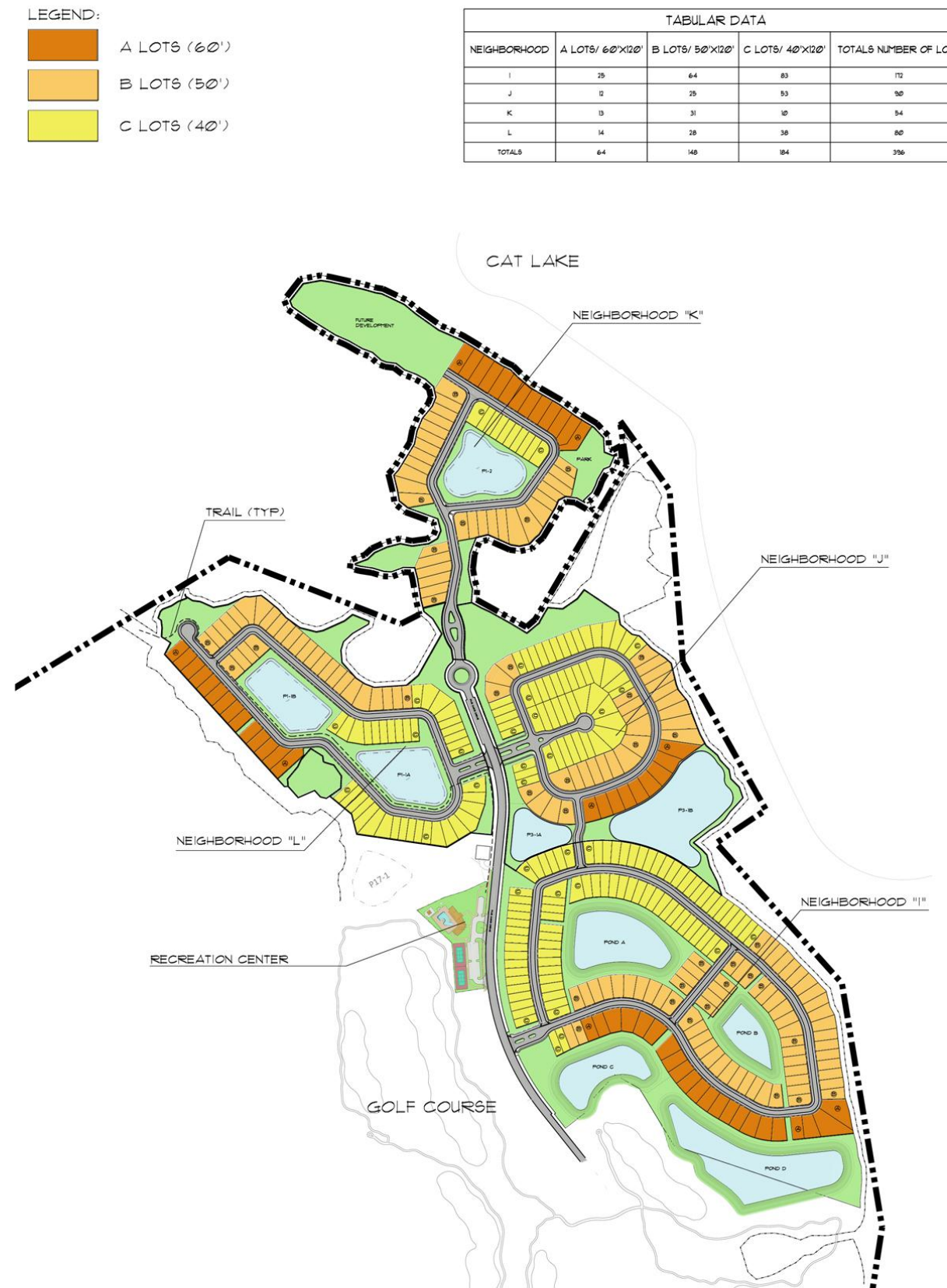
Harmony, FL 34773  Harmony

© 2015 Google

Imagery Date: 2/18/2015 28°11'53.88" N 81°08'







TABULAR DATA				
NEIGHBORHOOD	A LOTS/ 60'X120'	B LOTS/ 50'X120'	C LOTS/ 40'X120'	TOTALS NUMBER OF LOTS
I	25	64	83	172
J	12	25	53	90
K	13	31	10	54
L	14	25	58	97
TOTALS	64	145	104	313

NORTH

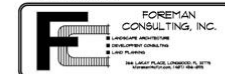
## SITE PLAN

HARMONY NEIGHBORHOODS I, J, K AND L

HARMONY, FLORIDA

SCALE: 1"=200'  
DATE: 10-26-2015

**F**





  
**THE LAKES**  
AT HARMONY

SUNSET GAZEBO

GOLF COURSE (HOLE #14)

TENNIS COURTS

DECK

POOL

"TRAIL HEAD"

GOLF CARTS PARKING  
( ± 40 SPACES)

RECREATION CENTER

RECREATION CENTER SIGNAGE

ENTRY DROP-OFF

PARKING ( ± 40 SPACES)

FIVE OAKS DRIVE

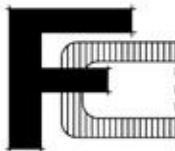
LANDSCAPE PLAN

HARMONY: RECREATION CENTER

HARMONY, FLORIDA

SCALE: 1" = 30' ± 0"  
DATE: 10-26-2015





FOREMAN  
CONSULTING, INC.

- LANDSCAPE ARCHITECTURE
- DEVELOPMENT CONSULTING
- LAND PLANNING

364 LAKAY PLACE, LONGWOOD, FL 32719  
407-456-4271

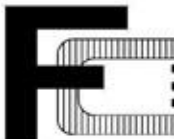


HARMONY NEIGHBORHOOD 'I'

COMMUNITY SIGNAGE AND ENTRY FEATURES

CITY OF HARMONY, FLORIDA

DATE: 06-25-2015



FOREMAN  
CONSULTING, INC.

- LANDSCAPE ARCHITECTURE
- DEVELOPMENT CONSULTING
- LAND PLANNING

384 LAKAY PLACE, LONGWOOD, FL 32719  
407-884-6777

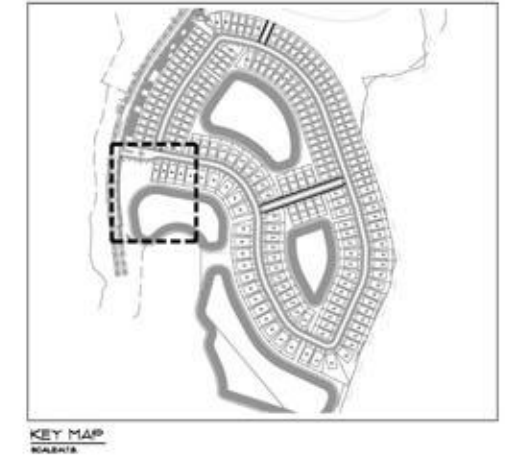
LEGEND:



CDD



HOA



KEY MAP  
SCALE: 1"=20'-0"



TRACT DELINEATION PLAN

SOUTH LAKES AT HARMONY

HARMONY, FLORIDA

SCALE: 1"=20'-0"  
DATE: 10-26-2015



FOREMAN  
CONSULTING, INC.

LANDSCAPE ARCHITECTURE  
DEVELOPMENT CONSULTING  
LAND PLANNING

384 LAKAY PLACE, LONGWOOD, FL 32779  
407-456-8275

- LEGEND:
- CDD
  - HOA



OVERALL PLAN

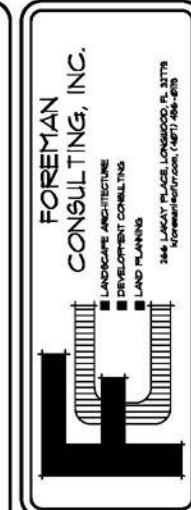
# HARMONY 'I' DELINEATION PLAN

HARMONY, FLORIDA

SCALE: 1"=80'  
DATE: 10-28-2015



A circular compass rose with a vertical line and a horizontal line intersecting at the center. The top half is shaded with diagonal lines. The word "NORTH" is written below the circle.



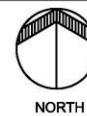
LANDSCAPE ARCHITECT:  
KENT FORSMAN, P.L.A.

[illegible]

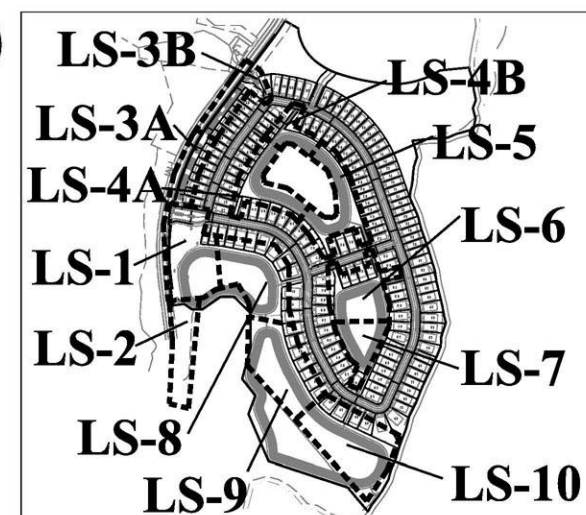
HARMONY  
NEIGHBORHOOD  
HARMONY, FLORIDA  
HARDSCAPE PLAN

DATE:	10/05/15
SCALE:	1=20'
DRAWN BY:	RYM
DESIGNED BY:	KJF
CHECKED BY:	KJF

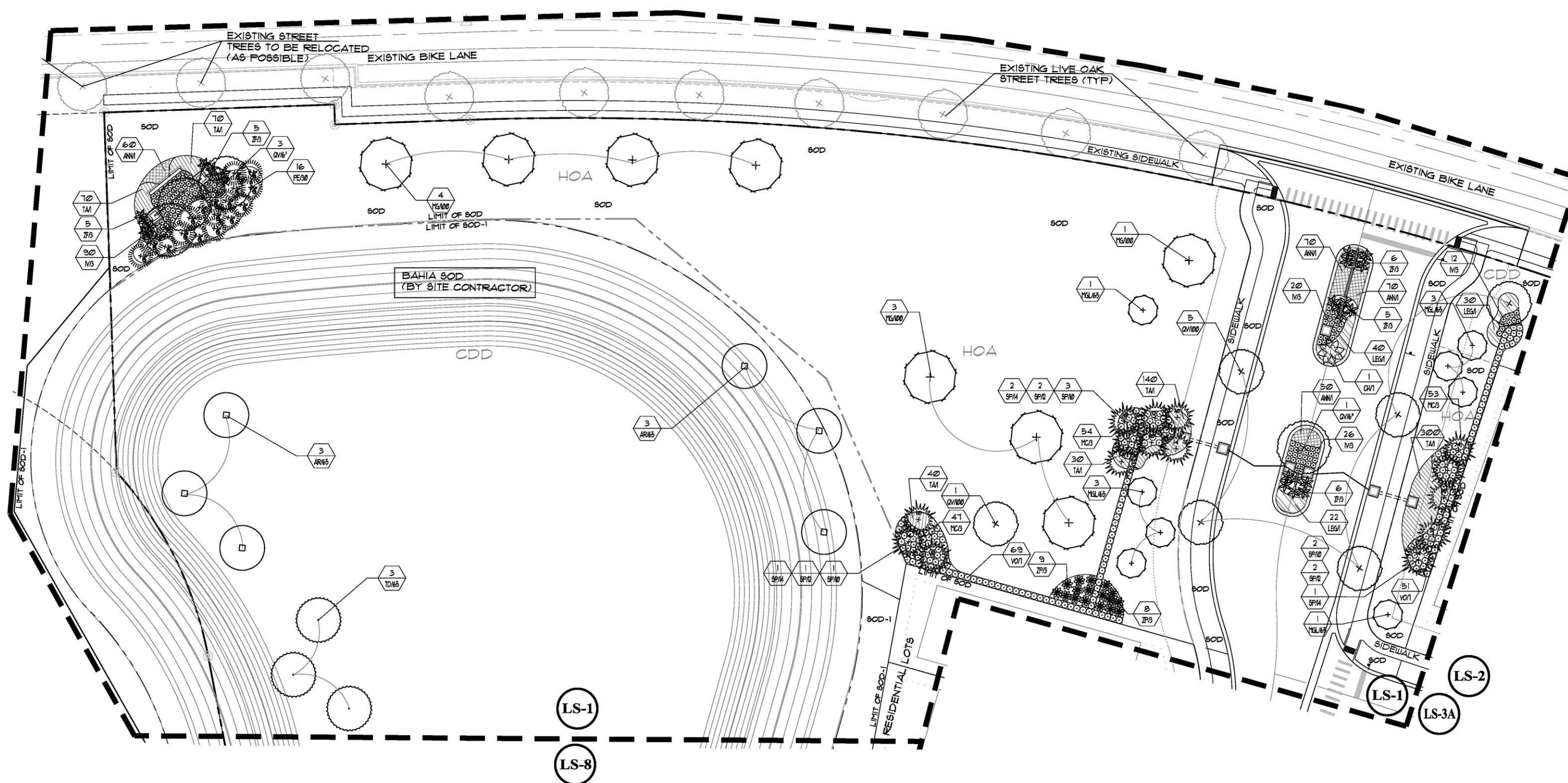
SHEET NO.  
HS-1



NOTE:  
THESE LANDSCAPE PLANS ARE IN ADDITION TO  
THE OSCEOLA COUNTY MINIMUM CODE  
REQUIREMENTS AND WILL BE IMPLEMENTED AT  
THE DISCRETION OF THE OWNER.



KEY MAP



**FOREMAN  
CONSULTING, INC.**

■ LANDSCAPE ARCHITECTURE  
■ DEVELOPMENT CONSULTING  
■ LAND PLANNING

266 LAKAY PLACE, LONGWOOD, FL 32778  
FOREMAN@CFL.NET (407) 584-6773

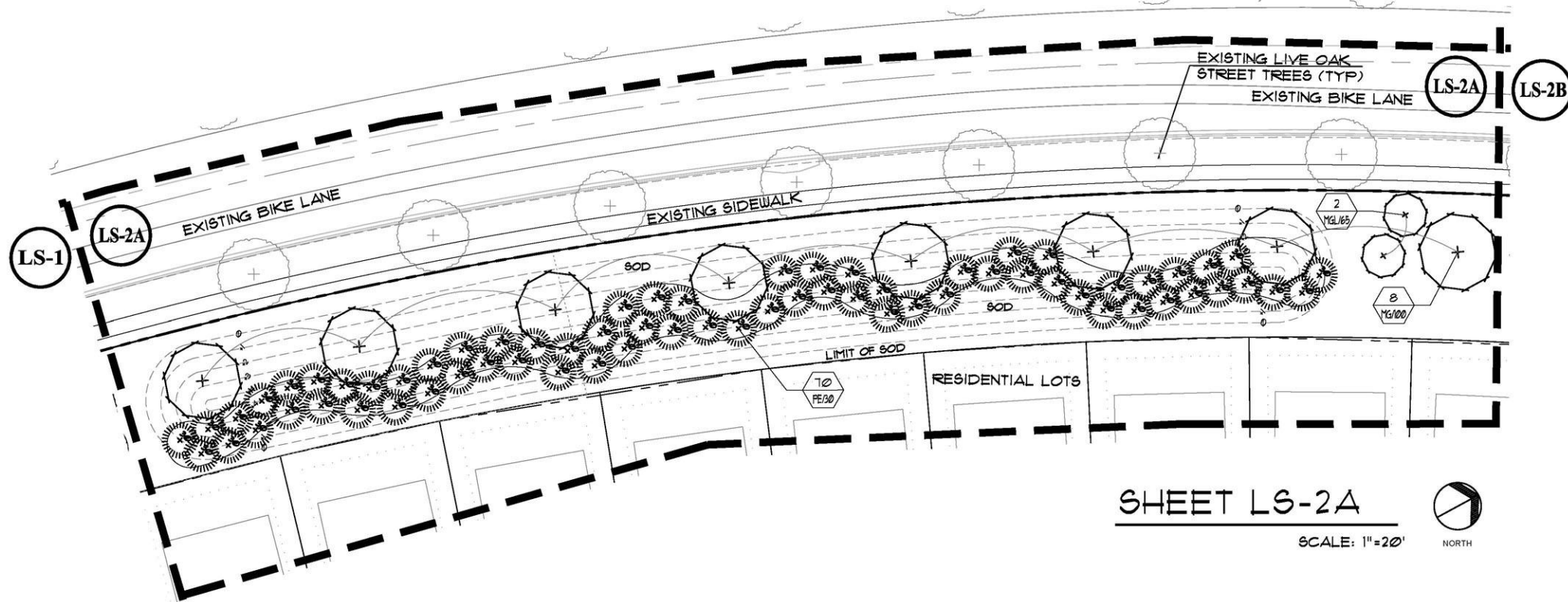
**LANDSCAPE ARCHITECT:**  
JAMES H. HARRIS, AIA, INC.

[illegible]

HARMONY  
NEIGHBORHOOD "I"  
HARMONY, FLORIDA

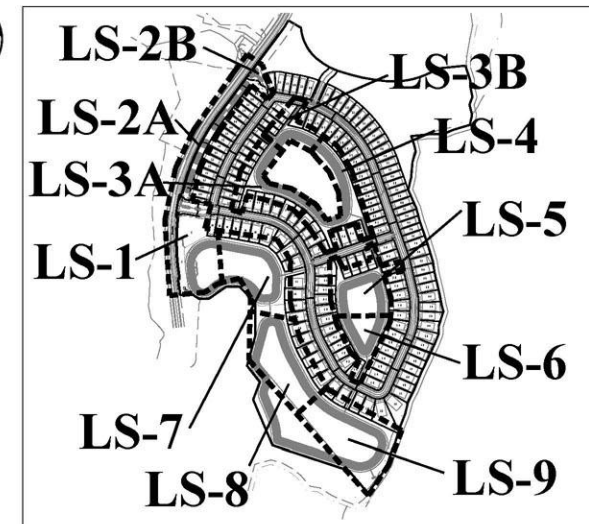
DATE:	10/05/15
SCALE:	1=20'
DRAWN BY:	RYM
DESIGNED BY:	KJF
CHECKED BY:	KJE

SHEET NO  
LS-1



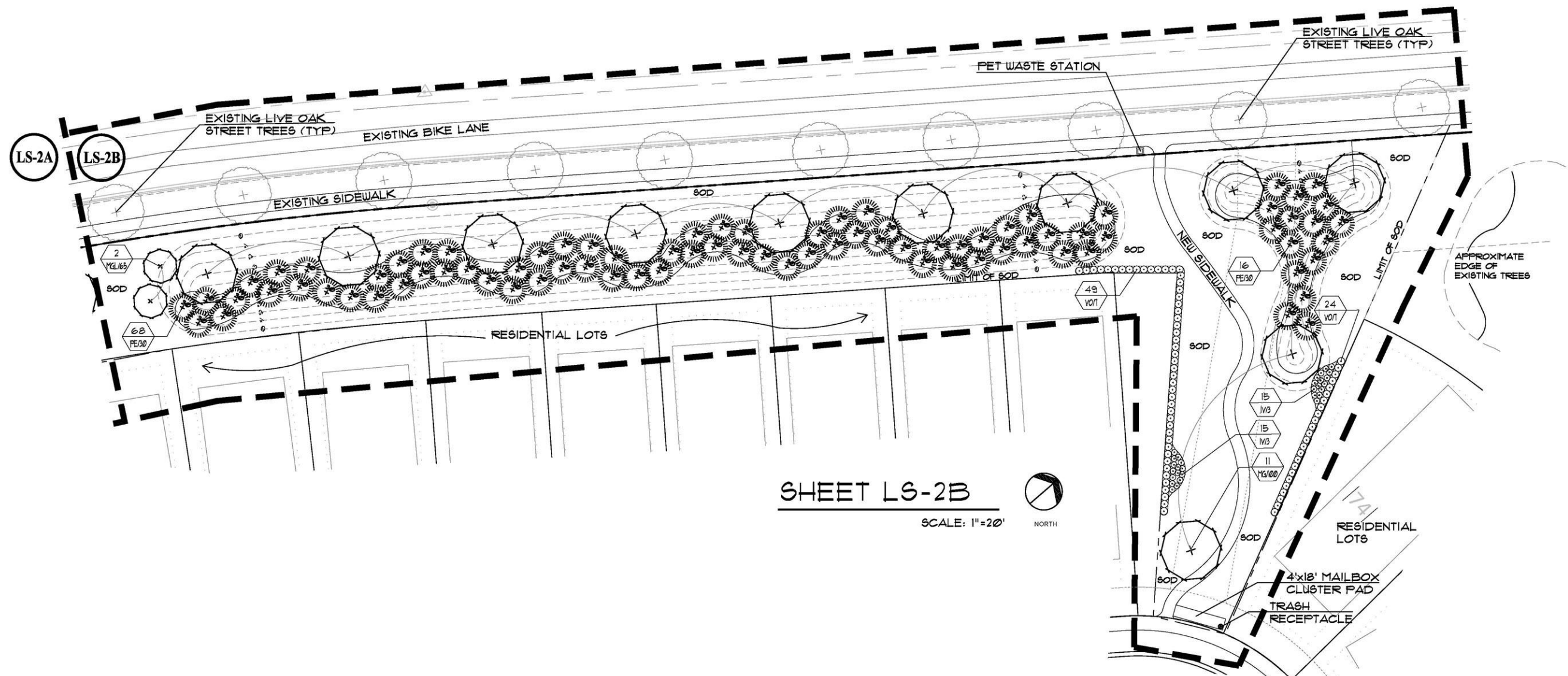
SHEET LS-2A

SCALE: 1"=20'



KEY MAP  
SCALE: 1"=20'

NOTE:  
THESE LANDSCAPE PLANS ARE IN ADDITION TO THE OSCEOLA COUNTY MINIMUM CODE REQUIREMENTS AND WILL BE IMPLEMENTED AT THE DISCRETION OF THE OWNER.



SHEET LS-2B

SCALE: 1"=20'



FOREMAN CONSULTING, INC.

LANDSCAPE ARCHITECTURE

DEVELOPMENT CONSULTING

LAND PLANNING

2846 LAKY PLACE LONGWOOD, FL 32779

Phone: (407) 884-0818

F

LANDSCAPE ARCHITECT

RENT FOREMAN, P.L.L.C.

DESCRIPTION

DATE

SCALE

DRAWN BY

DESIGNED BY

CHECKED BY

DATE

SCALE

DRAWN BY

DESIGNED BY

CHECKED BY

DATE

HARMONY NEIGHBORHOOD "I"

HARMONY, FLORIDA

LANDSCAPE PLAN

DATE: 10/05/15

SCALE: 1"=20'

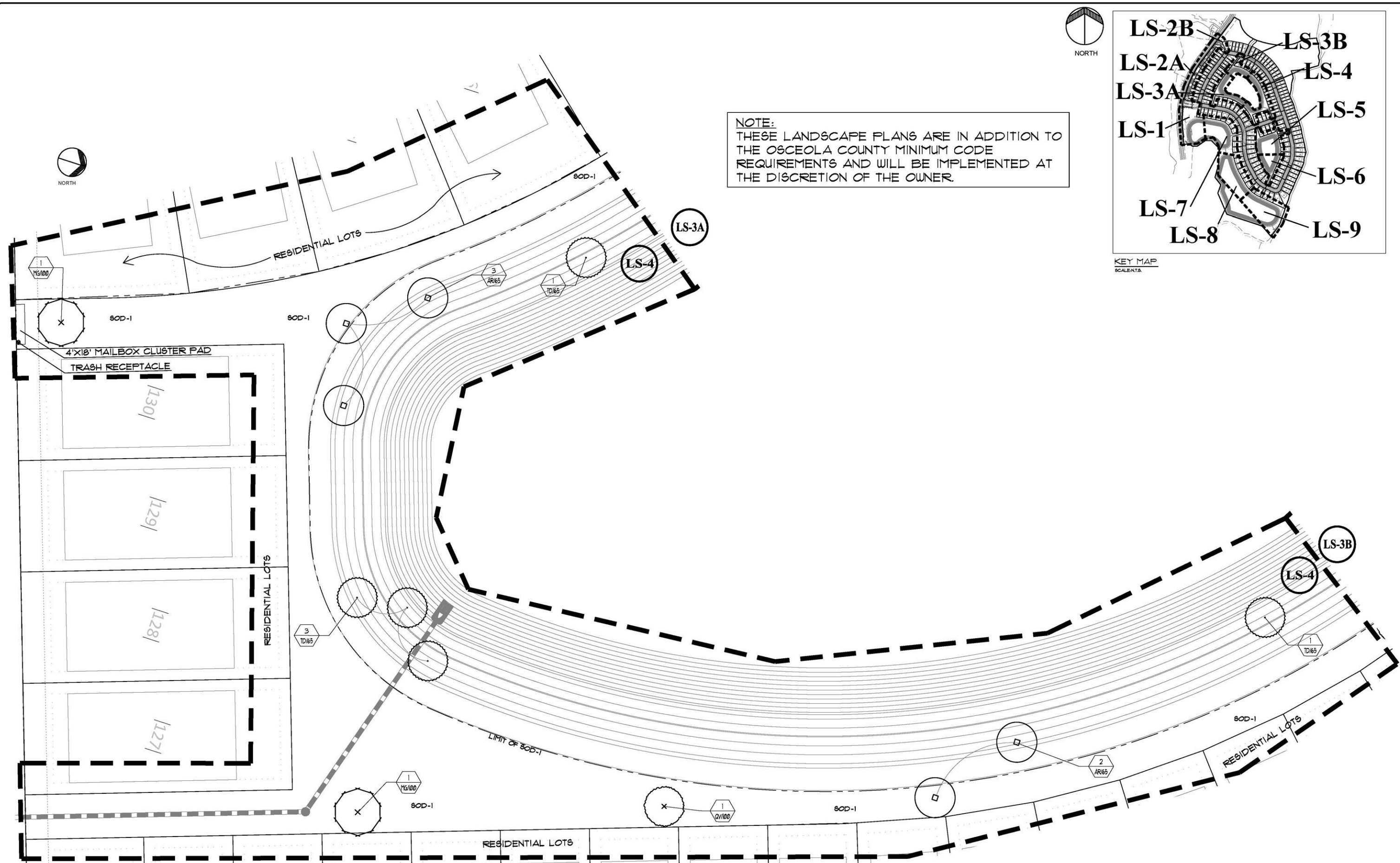
DRAWN BY: RYM

DESIGNED BY: KJF

CHECKED BY: KJF

SHEET NO.

LS-2




NORTH

The map shows the coastal area of İzmir, Turkey. The city center is indicated by a shaded area. The coastline is marked with a dashed line. Nine sampling stations are labeled: LS-1, LS-2A, LS-2B, LS-3A, LS-3B, LS-4, LS-5, LS-6, LS-7, LS-8, and LS-9. LS-1 is located in the inner harbor. LS-2A and LS-2B are in the northern harbor. LS-3A and LS-3B are in the central harbor. LS-4, LS-5, and LS-6 are along the southern coast. LS-7, LS-8, and LS-9 are in the outer harbor area.

KEY MAP

SCALE: 1:50,000

**FOREMAN  
CONSULTING, INC.**



- LANDSCAPE ARCHITECTURE
- DEVELOPMENT CONSULTING
- LAND PLANNING

266 LAKOTA PLACE, LONGWOOD, FL 32715  
(407) 854-0024 • FAX (407) 854-0025

ANDERSON ARCHITECT.

DESCRIPTION

1

HARMONY  
NEIGHBORHOOD "III"  
HARMONY, FLORIDA  
LANDSCAPE PLAN

DATE: 10/05/15

SCALE: 1"=20'

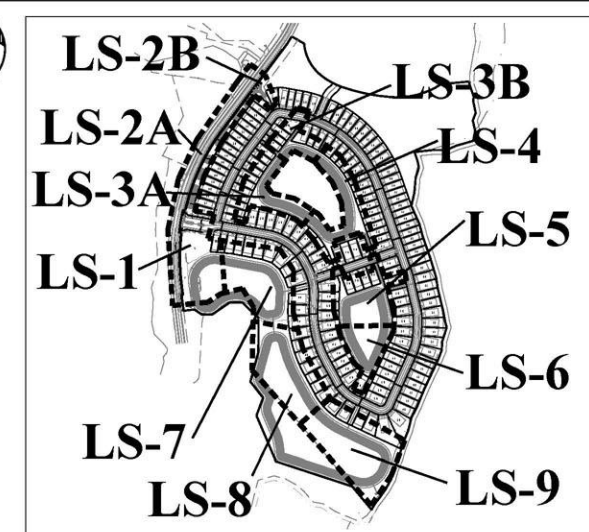
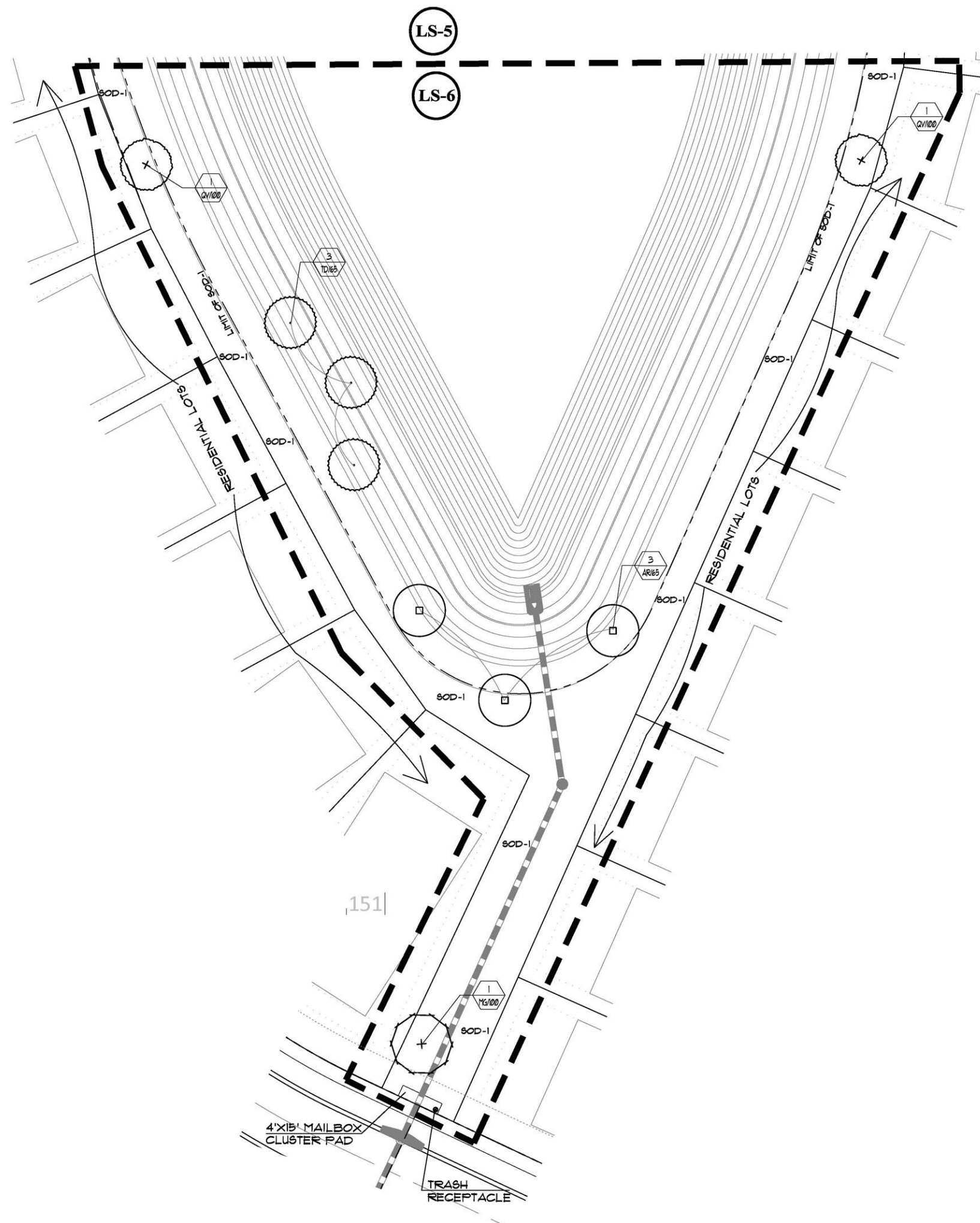
DRAWN BY:  
RYM

DESIGNED BY:  
K.JF

CHECKED BY: KJF

SHEET NO.

LS-4



**NOTE:**  
THESE LANDSCAPE PLANS ARE IN ADDITION TO THE OSCEOLA COUNTY MINIMUM CODE REQUIREMENTS AND WILL BE IMPLEMENTED AT THE DISCRETION OF THE OWNER.

**FOREMAN CONSULTING, INC.**  
LANDSCAPE ARCHITECTURE  
DEVELOPMENT CONSULTING  
LAND PLANNING  
2546 LAKAT PLACE, LONGWOOD, FL 32779  
Normal@foreman.com (407) 884-0818

DESCRIPTION	DATE	BY	CHK	BY	REG.	NO.

DESCRIPTION	DATE	BY	CHK	BY	REG.	NO.

HARMONY NEIGHBORHOOD "I"	
HARMONY, FLORIDA	
LANDSCAPE PLAN	

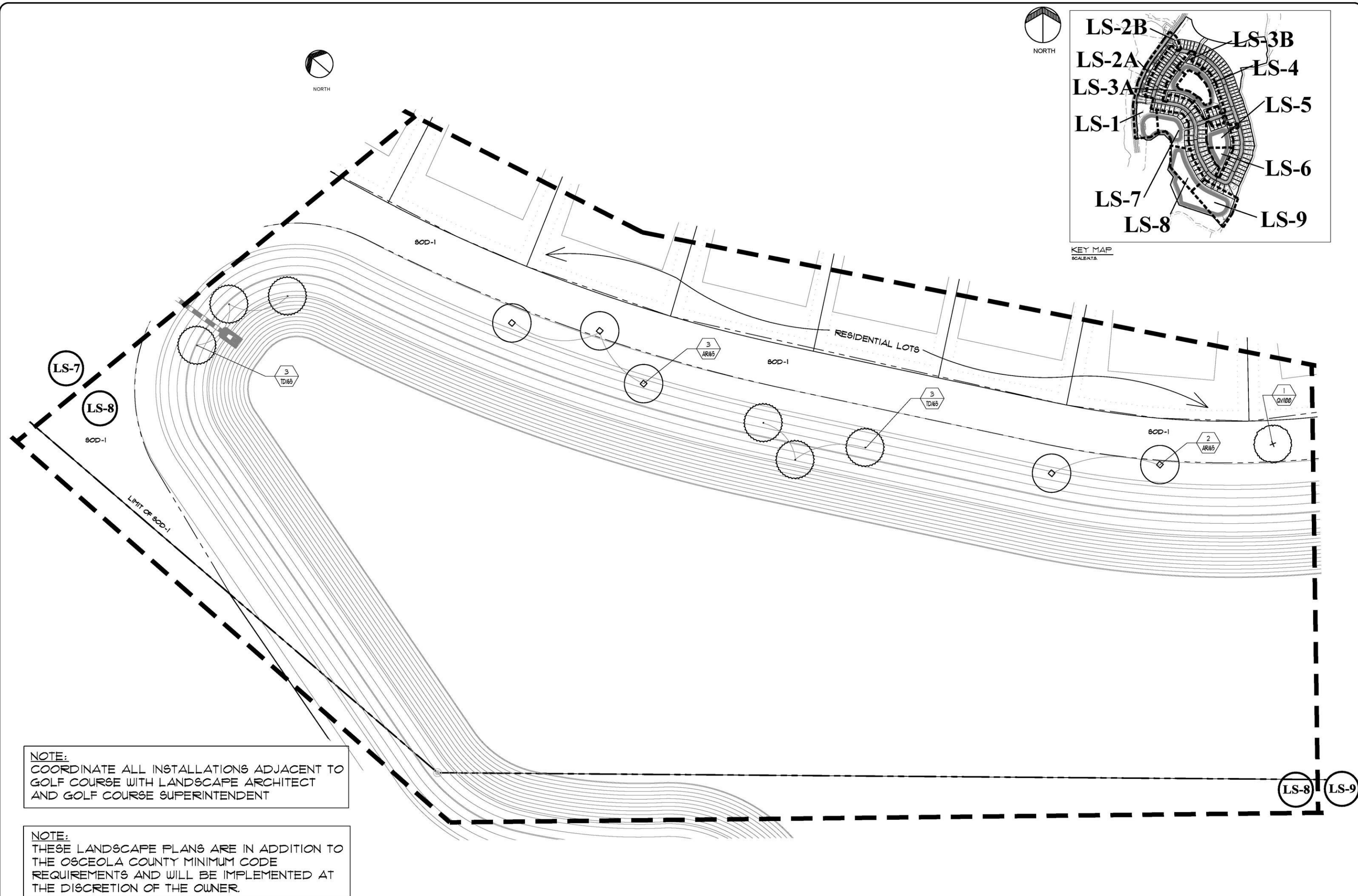
DATE:	10/05/15
SCALE:	1" = 20'
DRAWN BY:	RYM
DESIGNED BY:	KJF
CHECKED BY:	KJF

SHEET NO.	LS-6
-----------	------









KEY MAP

[illegible]

DATE:	10/05/15
SCALE:	1=20'
DRAWN BY:	RYM
DESIGNED BY:	KJF
CHECKED BY:	KJF



